



GOLA PROFILE SYSTEMS A, B+ & C+

Häfele Account No.

Date Items Required

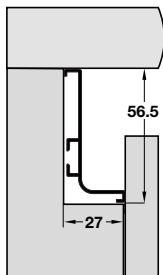
Contact Phone No.

Contact Name

Contact Email

- > Please use the form below to select the product you would like, tell us the length you would like it cut to, and how many lengths you would like. You can also order commonly associated items on this form too.
- > Send your completed form to hafeletoorder@hafele.co.uk to place your enquiry, or please call 0800 181 4290 if you have any queries.
- > There is no minimum number of lengths - you can order a single length to be cut. You will be charged for the full length of the item, plus a small cutting charge.
- > Please indicate below if you would like us to include any off cuts with your order or whether you would like us to dispose of them responsibly for you.
- > You will receive an order and price confirmation to approve before your order goes into production.

Gola B+ Horizontal profile, 4100 mm



- 126.36.940 - Silver anodised
- 126.36.104 - Bronze anodised
- 126.36.704 - Graphite powder coated
- 126.36.504 - Brushed brass anodised
- 126.36.804 - Brushed copper anodised
- 126.36.941 - Matt white powder coated
- 126.36.942 - Matt black powder coated

	Length required:	mm	Qty:
	Length required:	mm	Qty:
	Length required:	mm	Qty:
	Length required:	mm	Qty:
	Length required:	mm	Qty:
	Length required:	mm	Qty:
	Length required:	mm	Qty:

Need more than one length? Add more below:

Part No.	Colour	Length required:	mm	Qty:
Part No.	Colour	Length required:	mm	Qty:
Part No.	Colour	Length required:	mm	Qty:
Part No.	Colour	Length required:	mm	Qty:
Part No.	Colour	Length required:	mm	Qty:

Associated items:

- Gola B+/C+ profile connector
712.63.521 - Dowel fixing
- 712.63.511 - Screw fixing

Qty:

Qty:



Gola B+ trim caps (2 pcs)

- 126.36.947 - Silver anodised
- 126.36.180 - Bronze anodised
- 126.36.780 - Graphite powder coated
- 126.36.580 - Brushed brass anodised
- 126.36.880 - Brushed copper anodised
- 126.36.948 - Matt white powder coated
- 126.36.952 - Matt black powder coated

Qty:

Qty:

Qty:

Qty:

Qty:

Qty:

Qty:



Gola B+ profile connector for internal corners

- 126.36.946 - Silver anodised
- 126.36.181 - Bronze anodised
- 126.36.781 - Graphite powder coated
- 126.36.581 - Brushed brass anodised
- 126.36.881 - Brushed copper anodised
- 126.36.951 - Matt white powder coated
- 126.36.952 - Matt black powder coated

Qty:

Qty:

Qty:

Qty:

Qty:

Qty:

Qty:



Gola B+ profile connectors for external corners

- 126.36.945 - Silver anodised
- 126.36.182 - Bronze anodised
- 126.36.782 - Graphite powder coated
- 126.36.582 - Brushed brass anodised
- 126.36.882 - Brushed copper anodised
- 126.36.944 - Matt white powder coated
- 126.36.943 - Matt black powder coated

Qty:

Qty:

Qty:

Qty:

Qty:

Qty:

Qty:



Catenaria profile cross bar, 2670mm length

- > Profile cross bar for reinforcing base cabinets
- > Surface mounted
- > Cross bar slots onto thin 4/6mm back panel
- > Length: 2670mm; can be cut to size
- > Aluminium
- > Order qty: 1 pc
- 126.36.955 - Catenaria profile

Qty:



Catenaria cover caps for profile cross bar

- > Set includes
- 2x cover caps to suit Catenaria cross bar
- 1x fixing bracket to secure the countertop to the Catenaria
- > 58 x 18 mm
- > Grey plastic
- > Order qty: 1 set
- 126.36.956 - Cover caps
- 126.36.957 - Fixing screw

Qty:

Qty:

Standard T&Cs apply plus:

- > Once orders are confirmed and placed and the goods are in production, we cannot cancel the order
- > No returns can be accepted for Häfele to Order items as these are made to customer's specific requirements

Please tick this box if you would like us to include any off cuts with your order

INTERNAL USE ONLY:



GOLA PROFILE SYSTEMS A, B+ & C+

Häfele Account No.

Date Items Required

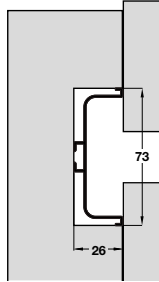
Contact Phone No.

Contact Name

Contact Email

- > Please use the form below to select the product you would like, tell us the length you would like it cut to, and how many lengths you would like. You can also order commonly associated items on this form too.
- > Send your completed form to hafeletoorder@hafele.co.uk to place your enquiry, or please call **0800 181 4290** if you have any queries.
- > There is no minimum number of lengths - you can order a single length to be cut. You will be charged for the full length of the item, plus a small cutting charge.
- > Please indicate below if you would like us to include any off cuts with your order or whether you would like us to dispose of them responsibly for you.
- > You will receive an order and price confirmation to approve before your order goes into production.

Gola C+ Horizontal profile, 4100 mm



- 126.36.950 - Silver anodised
 - 126.36.114 - Bronze anodised
 - 126.36.714 - Graphite powder coated
 - 126.36.514 - Brushed brass anodised
 - 126.36.814 - Brushed copper anodised
 - 126.36.953 - Matt white powder coated
 - 126.36.954 - Matt black powder coated
- Need more than one length? Add more below:

	Length required:	<input type="text"/>	mm	Qty:	<input type="text"/>
	Length required:	<input type="text"/>	mm	Qty:	<input type="text"/>
	Length required:	<input type="text"/>	mm	Qty:	<input type="text"/>
	Length required:	<input type="text"/>	mm	Qty:	<input type="text"/>
	Length required:	<input type="text"/>	mm	Qty:	<input type="text"/>
	Length required:	<input type="text"/>	mm	Qty:	<input type="text"/>
	Length required:	<input type="text"/>	mm	Qty:	<input type="text"/>

Part No.	Colour	Length required:	mm	Qty:	<input type="text"/>
Part No.	Colour	Length required:	mm	Qty:	<input type="text"/>
Part No.	Colour	Length required:	mm	Qty:	<input type="text"/>
Part No.	Colour	Length required:	mm	Qty:	<input type="text"/>
Part No.	Colour	Length required:	mm	Qty:	<input type="text"/>

Associated items:



- Gola B+/C+ profile connector
- 712.63.521 - Dowel fixing Qty:
 - 712.63.511 - Screw fixing Qty:



- Gola C+ trim caps (2 pcs)
- 126.36.986 - Silver anodised Qty:
 - 126.36.183 - Bronze anodised Qty:
 - 126.36.783 - Graphite powder coated Qty:
 - 126.36.583 - Brushed brass anodised Qty:
 - 126.36.883 - Brushed copper anodised Qty:
 - 126.36.987 - Matt white powder coated Qty:
 - 126.36.988 - Matt black powder coated Qty:

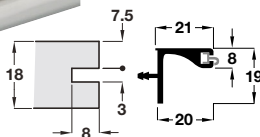
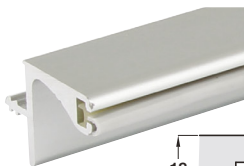


- Gola C+ profile connector for internal corners
- 126.36.985 - Silver anodised Qty:
 - 126.36.184 - Bronze anodised Qty:
 - 126.36.784 - Graphite powder coated Qty:
 - 126.36.584 - Brushed brass anodised Qty:
 - 126.36.884 - Brushed copper anodised Qty:
 - 126.36.984 - Matt white powder coated Qty:
 - 126.36.983 - Matt black powder coated Qty:

Gola C+ profile connectors for external corners

- 126.37.916 - Silver anodised Qty:
- 126.37.915 - Bronze anodised Qty:
- 126.37.917 - Graphite powder coated Qty:
- 126.36.918 - Brushed brass anodised Qty:
- 126.36.919 - Brushed copper anodised Qty:
- 126.36.914 - Matt white powder coated Qty:
- 126.36.913 - Matt black powder coated Qty:

Gola A Horizontal profile for under wall cabinets, 3900 mm



- 126.48.900 - Without shock absorber - Silver anodised
 - 126.48.910 - With shock absorber - Silver anodised
- Need more than one length? Add more below:

Length required:	<input type="text"/>	mm	Qty:	<input type="text"/>
Length required:	<input type="text"/>	mm	Qty:	<input type="text"/>
Length required:	<input type="text"/>	mm	Qty:	<input type="text"/>
Length required:	<input type="text"/>	mm	Qty:	<input type="text"/>
Length required:	<input type="text"/>	mm	Qty:	<input type="text"/>

Part No.	Colour	Length required:	mm	Qty:	<input type="text"/>
Part No.	Colour	Length required:	mm	Qty:	<input type="text"/>
Part No.	Colour	Length required:	mm	Qty:	<input type="text"/>
Part No.	Colour	Length required:	mm	Qty:	<input type="text"/>

Standard T&Cs apply plus:

- > Once orders are confirmed and placed and the goods are in production, we cannot cancel the order
- > No returns can be accepted for Häfele to Order items as these are made to customer's specific requirements

Please tick this box if you would like us to include any off cuts with your order

INTERNAL USE ONLY: