



**GOLA PROFILE SYSTEMS D & E**

**Häfele Account No.**

**Date Items Required**

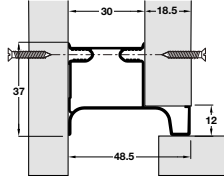
**Contact Phone No.**

**Contact Name**

**Contact Email**

- > Please use the form below to select the product you would like, tell us the length you would like it cut to, and how many lengths you would like. You can also order commonly associated items on this form too.
- > Send your completed form to [hafeletoorder@hafele.co.uk](mailto:hafeletoorder@hafele.co.uk) to place your enquiry, or please call **0800 181 4290** if you have any queries.
- > There is no minimum number of lengths - you can order a single length to be cut. You will be charged for the full length of the item, plus a small cutting charge.
- > Please indicate below if you would like us to include any off cuts with your order or whether you would like us to dispose of them responsibly for you.
- > You will receive an order and price confirmation to approve before your order goes into production.

**Gola D Vertical end profile - for fixing between cabinet and door, 2670 mm**



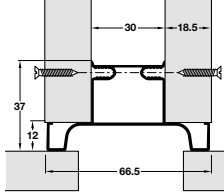
- 126.36.972 - Silver anodised
- 126.36.872 - Bronze anodised
- 126.36.772 - Graphite powder coated
- 126.36.572 - Brushed brass anodised
- 126.36.172 - Brushed copper anodised
- 126.36.973 - Matt white powder coated
- 126.36.974 - Matt black powder coated

Need more than one length? Add more below:

Part No.	Colour
Part No.	Colour
Part No.	Colour
Part No.	Colour

	Length required:	mm	Qty:
	Length required:	mm	Qty:
	Length required:	mm	Qty:
	Length required:	mm	Qty:
	Length required:	mm	Qty:
	Length required:	mm	Qty:
	Length required:	mm	Qty:

**Gola D Vertical end profile - for fixing between doors, 2670 mm**



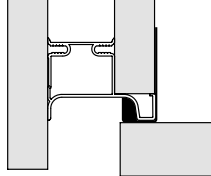
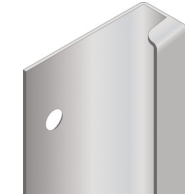
- 126.36.962 - Silver anodised
- 126.36.862 - Bronze anodised
- 126.36.762 - Graphite powder coated
- 126.36.562 - Brushed brass anodised
- 126.36.162 - Brushed copper anodised
- 126.36.963 - Matt white powder coated
- 126.36.964 - Matt black powder coated

Need more than one length? Add more below:

Part No.	Colour
Part No.	Colour
Part No.	Colour
Part No.	Colour

	Length required:	mm	Qty:
	Length required:	mm	Qty:
	Length required:	mm	Qty:
	Length required:	mm	Qty:
	Length required:	mm	Qty:
	Length required:	mm	Qty:
	Length required:	mm	Qty:

**Gola D Vertical profile - for fixing between cabinet and oven, 580 mm**



- 126.38.910 - Silver anodised
- 126.38.810 - Bronze anodised
- 126.38.710 - Graphite powder coated
- 126.38.510 - Brushed brass anodised
- 126.38.110 - Brushed copper anodised
- 126.38.912 - Matt white powder coated
- 126.38.913 - Matt black powder coated

Need more than one length? Add more below:

Part No.	Colour
Part No.	Colour
Part No.	Colour
Part No.	Colour

	Length required:	mm	Qty:
	Length required:	mm	Qty:
	Length required:	mm	Qty:
	Length required:	mm	Qty:
	Length required:	mm	Qty:
	Length required:	mm	Qty:
	Length required:	mm	Qty:



Spacer set for System D vertical profiles  
126.36.958 - Zinc plated steel Qty:

**Standard T&Cs apply plus:**

- > Once orders are confirmed and placed and the goods are in production, we cannot cancel the order
- > No returns can be accepted for Häfele to Order items as these are made to customer's specific requirements

Please tick this box if you would like us to include any off cuts with your order

**INTERNAL USE ONLY:**



**GOLA PROFILE SYSTEMS D & E**

Häfele Account No.

Date Items Required

Contact Phone No.

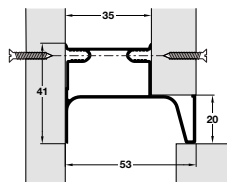
Contact Name

Contact Email

- > Please use the form below to select the product you would like, tell us the length you would like it cut to, and how many lengths you would like. You can also order commonly associated items on this form too.
- > Send your completed form to [hafeletoorder@hafele.co.uk](mailto:hafeletoorder@hafele.co.uk) to place your enquiry, or please call 0800 181 4290 if you have any queries.
- > There is no minimum number of lengths - you can order a single length to be cut. You will be charged for the full length of the item, plus a small cutting charge.
- > Please indicate below if you would like us to include any off cuts with your order or whether you would like us to dispose of them responsibly for you.
- > You will receive an order and price confirmation to approve before your order goes into production.

**Standard T&Cs apply plus:**  
 > Once orders are confirmed and placed and the goods are in production, we cannot cancel the order  
 > No returns can be accepted for Häfele to Order items as these are made to customer's specific requirements

**Gola E Vertical end profile - for fixing between cabinet and door, 2400 mm**

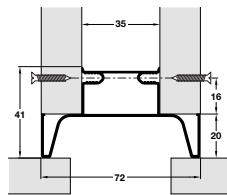


- 126.37.962 - Silver anodised
  - 126.37.122 - Bronze anodised
  - 126.37.762 - Graphite powder coated
  - 126.37.562 - Brushed brass anodised
  - 126.37.162 - Brushed copper anodised
  - 126.37.963 - Matt white powder coated
  - 126.37.974 - Matt black powder coated
- Need more than one length? Add more below:

Part No.	Colour
Part No.	Colour
Part No.	Colour
Part No.	Colour

	Length required:	mm	Qty:
	Length required:	mm	Qty:
	Length required:	mm	Qty:
	Length required:	mm	Qty:
	Length required:	mm	Qty:
	Length required:	mm	Qty:
	Length required:	mm	Qty:
<input type="text"/>	Length required:	mm	Qty:
<input type="text"/>	Length required:	mm	Qty:
<input type="text"/>	Length required:	mm	Qty:
<input type="text"/>	Length required:	mm	Qty:

**Gola E Vertical end profile - for fixing between doors, 2400 mm**

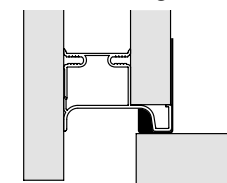
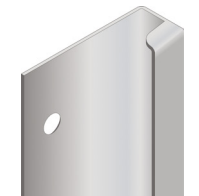


- 126.37.942 - Silver anodised
  - 126.36.132 - Bronze anodised
  - 126.37.742 - Graphite powder coated
  - 126.37.542 - Brushed brass anodised
  - 126.37.142 - Brushed copper anodised
  - 126.37.943 - Matt white powder coated
  - 126.37.944 - Matt black powder coated
- Need more than one length? Add more below:

Part No.	Colour
Part No.	Colour
Part No.	Colour
Part No.	Colour

	Length required:	mm	Qty:
	Length required:	mm	Qty:
	Length required:	mm	Qty:
	Length required:	mm	Qty:
	Length required:	mm	Qty:
	Length required:	mm	Qty:
	Length required:	mm	Qty:
<input type="text"/>	Length required:	mm	Qty:
<input type="text"/>	Length required:	mm	Qty:
<input type="text"/>	Length required:	mm	Qty:
<input type="text"/>	Length required:	mm	Qty:

**Gola E Vertical profile - for fixing between cabinet and oven, 580 mm**



- 126.37.891 - Silver anodised
  - 126.37.890 - Bronze anodised
  - 126.37.892 - Graphite powder coated
  - 126.37.893 - Brushed brass anodised
  - 126.37.894 - Brushed copper anodised
  - 126.37.895 - Matt white powder coated
  - 126.37.896 - Matt black powder coated
- Need more than one length? Add more below:

Part No.	Colour
Part No.	Colour
Part No.	Colour
Part No.	Colour

	Length required:	mm	Qty:
	Length required:	mm	Qty:
	Length required:	mm	Qty:
	Length required:	mm	Qty:
	Length required:	mm	Qty:
	Length required:	mm	Qty:
	Length required:	mm	Qty:
<input type="text"/>	Length required:	mm	Qty:
<input type="text"/>	Length required:	mm	Qty:
<input type="text"/>	Length required:	mm	Qty:
<input type="text"/>	Length required:	mm	Qty:



Catenaria profile cross bar, 2670mm length  
 > Profile cross bar for reinforcing base cabinets  
 > Surface mounted  
 > Cross bar slots onto thin 4/6mm back panel  
 > Length: 2670mm; can be cut to size  
 > Aluminium  
 > Order qty: 1 pc  
 126.36.955 - Catenaria profile Qty:



Catenaria cover caps for profile cross bar  
 > Set includes  
 2x cover caps to suit Catenaria cross bar  
 1x fixing bracket to secure the countertop to the Catenaria  
 > 58 x 18 mm  
 > Grey plastic  
 > Order qty: 1 set  
 126.36.956 - Cover caps Qty:  
 126.36.957 - Fixing screw Qty:

Please tick this box if you would like us to include any off cuts with your order

INTERNAL USE ONLY: