

# WHAT'S NEW

AUTUMN  
EDIT 2020

IDEAS FOR LIVING

BROUGHT TO YOU BY

HÄFELE

.....  
*KEY TRENDS*  
FOR KITCHENS,  
BEDROOMS &  
BATHROOMS

.....  
*How to create*  
*the perfect kitchen*

.....  
LIGHTING UNDER  
THE SPOTLIGHT

.....  
HOW TO  
MAXIMISE  
SPACE IN  
YOUR HOME

.....  
*introducing our new*  
KITCHEN  
PLANNING  
TOOL

.....  
*the latest in*  
APPLIANCES



.....  
*Ask the*  
Expert



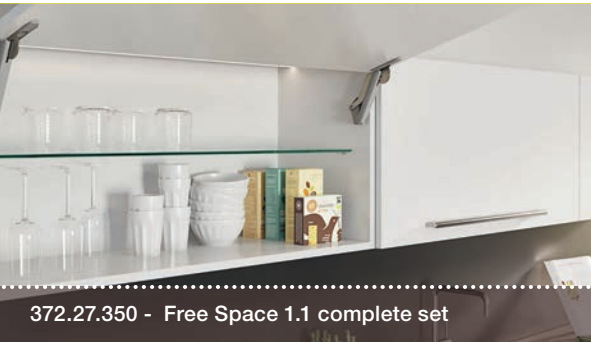
502.91.162 - Ninka one2five modular bin system, dark grey, 450 mm width - 2x 32 litre bins



546.40.493 - VS SUB Side, Premea lava grey



551.54.335 - Matrix Box standard drawer set, anthracite, 553.60.445 & 551.60.999 - Decorative sides with glass



372.27.350 - Free Space 1.1 complete set



549.57.011 - VS TAL Gate, Premea lava grey

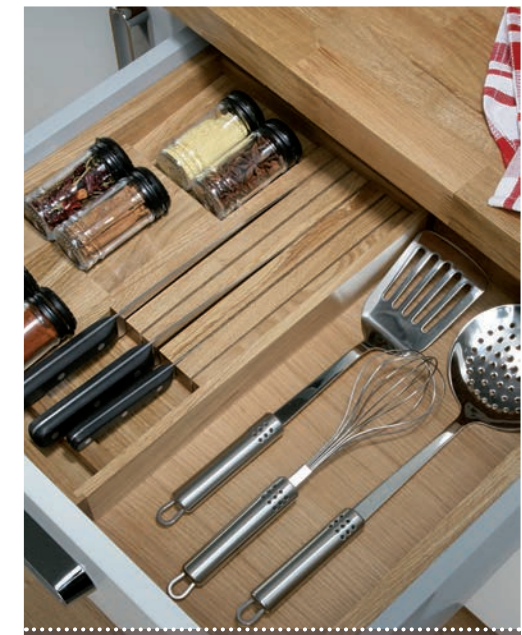
# STORAGE FOR EVERY SQUARE METRE

Get more life per m<sup>2</sup> in your home with our flexible range of the highest quality storage accessories and fittings.

Ask your designer for Häfele.



542.05.290 - Cornerstone Swing, white & chrome, unhandled



556.98.501 - eXTray expanding cutlery insert for spice jars & knives



548.13.624 - VS COR Fold, Premea lava grey, right hand version

# in this EDITION

HELLO AND WELCOME to this new look edition of What's New from Häfele. We've been designing, making and distributing furniture fittings and accessories in the UK market for **40 years**.

In this issue you'll find, **flexible living spaces** (page 30), an overview of the **difference lighting can make to your home** (page 27) and top tips on how to plan the **perfect kitchen** (page 15).

We also get the answers to common home design and renovation questions from our **panel of experts (page 21)** and get the lowdown on the **latest in appliances (page 34)**.

As it's our first new look edition, we'd love your feedback on this issue, plus we want to hear how you're putting tips and advice into practice in your home. To share your thoughts, pictures and videos follow us on Facebook at @IdeasForLiving and on Instagram @IdeasForLiving. Here you'll also find the latest news, tips and advice on how to make more of every square metre of your home.

Happy reading and planning!

Häfele

ideasforliving  
www.instagram.com/ideasforliving

ideasforlivinguk  
www.facebook.com/ideasforlivinguk



27 Flexible Living Spaces



16 Perfect Kitchen



19 Panel of Experts



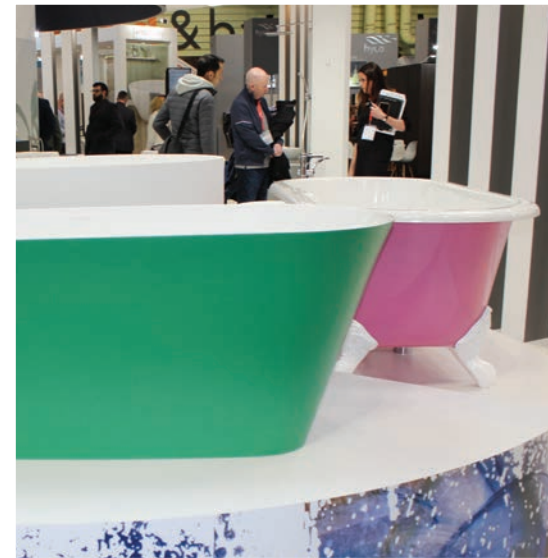
24 Lighting



30 Appliances

# WHAT'S NEW THIS SEASON

Having been in business in the UK for 40 years this year, and nearly 100 years since Häfele was born, we have a keen understanding of the trends within furniture, usually driven by homeowners. Here are a few we can see coming through in the next 12 months.



Bold and bright wash basins from Victoria + Albert

# BOLD BRIGHTS

Colour drives trend & right now it is all about daring shades across everything from bathroom sinks, to our very own AluSplash splashbacks.



Fabal Casa- Adding a splash of colour with a coral pink against the darker cabinets



Even sanitaryware can bring colour into your bathroom



Sinks in pink from Dansani

# LIGHT AND OPEN

Making its way over from the continent, open shelving and storage when paired with our Loox LED furniture lighting, is a key trend.



Loox lights open up storage and shelving



You can find out more about planning the perfect space on page 14!



Open shelving - trend coming from across the continent to the UK, image from Scavolini

# A GOOD PLAN

With so many ideas and so much inspiration, it's no wonder that our Kitchen Planning Tool is helping people refine their choices.

# OUT OF SIGHT, BUT NOT OUT OF MIND

Concealed and hidden is still a big feature in today's kitchen. Accuride's Sliding Track System that allows kitchen appliances to be hidden under worktops attracted attention at

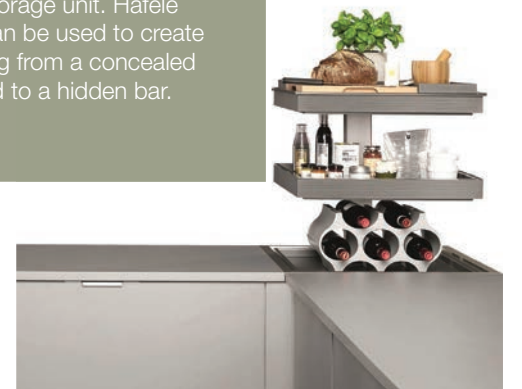
KBB in March, as did the Ninka Qanto, an innovative corner storage unit. Häfele fittings can be used to create everything from a concealed cupboard to a hidden bar.



Accuride sliding track system



Smeg linea inset mount sink with retractable tap



Ninka Qanto vertical rising corner storage unit

# TRENDS

## Guide



547.17.033 - VS TAL Larder, lava grey

## Dark DECADENCE

Adding extravagance to the industrial aesthetic, dark decadence combines rich, dramatic shades with luxurious metallics and smooth matte finishes for a contemporary look.

With interest in dark kitchens continuing to rise, dramatic, bold looks will continue to grow in demand in 2021 and beyond.

Complement and enhance dark walls or cabinetry with understated flat matte accessories that make your kitchen pop and create a feeling of luxury and added depth.

For more ideas on how to create Dark Decadence perfection, we love #styleitdark on Instagram!



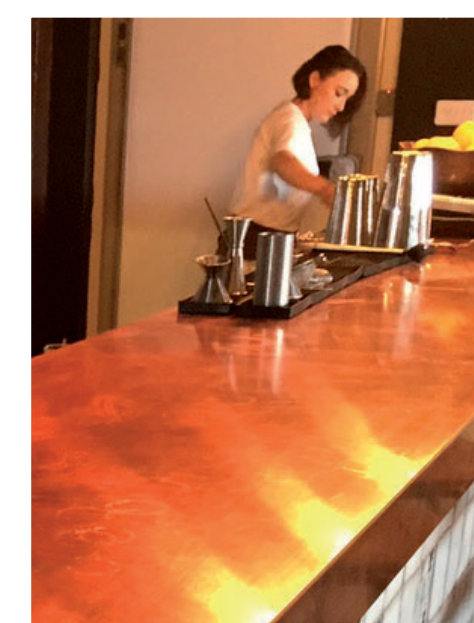
Proving dark shades are here to stay, Vauth-Sagel, which makes premium storage solutions, has just switched the mid-grey shade of their storage systems to **Premea Lava Grey**, a bolder, darker option.



503.16.373 - VS ENVI drawer, lava grey



542.02.880 - Cornerstone Maxx, lava grey



This **copper worktop** from Häfele brings warmth to a dark space. Plus it is anti-bacterial and microbial making it ideal for family living.

# Calm NEUTRALS

As environmental issues remain strong in the public consciousness, the trend for Raw Neutrals has emerged in 2020. Organic, earth-inspired and calm, this trends sees an influx in natural materials and finishes in the kitchen, bringing lightness and tranquillity to what can sometimes be a hectic space.



Calm in colour and easy to clean and maintain, this **AluSplash splashback in Warm Grey** is a truly serene choice for the kitchen 564.53.011.

Get the look without the price tag. Manufactured from man-made acrylic, this Minerva Calcutta White worktop has veining all the way through but is more cost-effective than real marble.



Natural jute rugs bring texture to a space as well as practicality

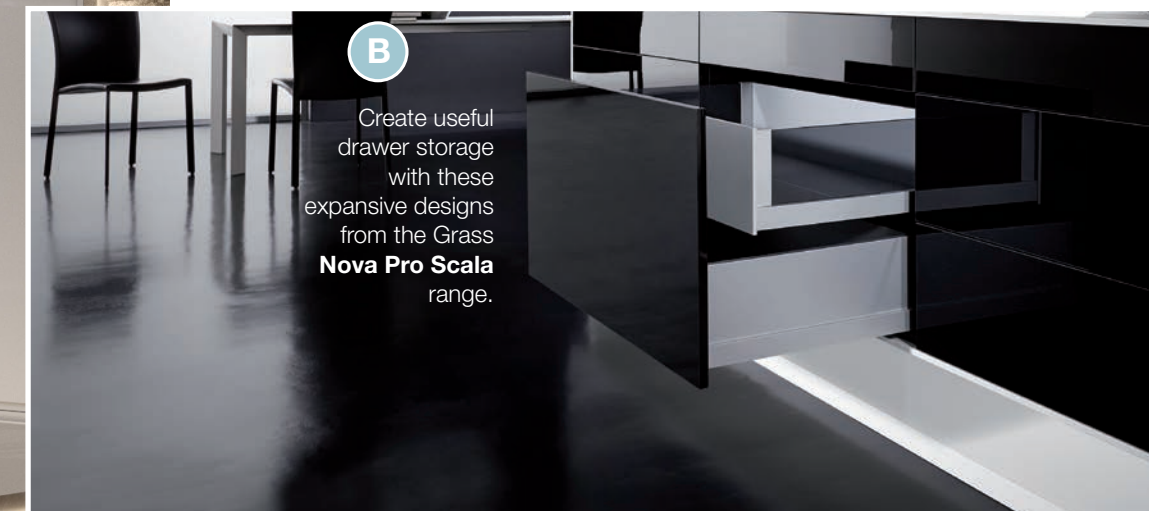


Alusplash colour options

get the .....  
**LOOK**



**A** Highlight key features of your kitchen with **Loox strip lighting**. Versatile in application, Loox can also be used in drawers to help you find exactly what you need.



**B** Create useful drawer storage with these expansive designs from the **Grass Nova Pro Scala** range.



**C** Whether you want fold, swing or **flap fittings**, our **FREE** range has a solution to make the most of the room height of your kitchen.



**D** Practical doesn't have to be dull. Our range of kitchen ventilation, including Smeg's stylish tilting glass **Linea hood**, creates sleek, minimalist lines.

536.84.541 - Smeg Linea angled chimney hood, black

# SLEEK & MODERN

Looking to create a sleek and modern look in your home? Get the look with these super stylish products.

GET THE LOOK

# Country TRADITIONAL

- If a traditional, rural vibe is more your thing, then this is the look for you.
- Here's how to create the countryside aesthetic in your kitchen.



**Mulberry Cup Handles & Knobs** are the perfect choice when set against a green colour scheme. Mulberry Cup handle and knob in brushed copper finish  
Cup handle 151.40.154  
Knob 134.97.020



**A**  
Create a standout feature in your kitchen with **copper pendant lighting**  
Oberon Ceiling Pendant in copper finish  
833.42.094

Nothing says country traditional like a **Rangemaster cooker and extractor hood**  
Rangemaster Nexus Steam Range Cooker Black finish  
535.01.770

Whether entertaining or relaxing with a glass of red, the **Vauth Sagel Pull Out Bottle Rack** keeps bottles out of sight but accessible when needed  
VS TAL WIRO Bottle pull out unit with 16 bottle wine rack for 150 mm cabinets  
549.85.202



Kitchen Designed by Davonport Kitchens - [www.ideasforliving.co.uk/studios/davonport](http://www.ideasforliving.co.uk/studios/davonport)

introducing our  
**KITCHEN  
 PLANNING  
 TOOL**

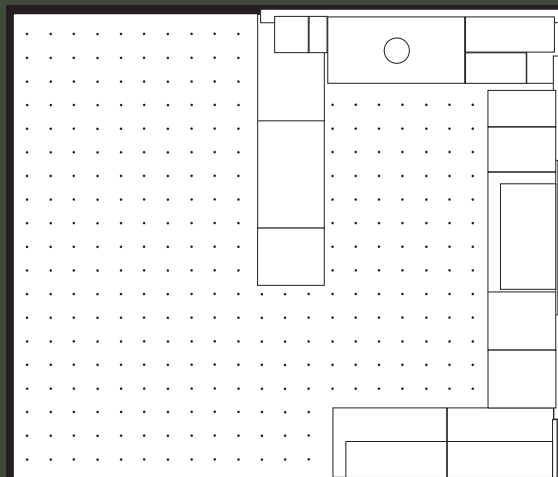
Balancing style, function and making the most of space in a kitchen is now even easier thanks to our free Kitchen Planning Tool. Available on our website, [ideasforliving.co.uk](http://ideasforliving.co.uk), the tool has six easy steps to follow.

To start, take a personality test, which determines how you use your kitchen and helps design a room that is aesthetically pleasing and tailored to your lifestyle.

Next, choose a style, before entering the room's shape, dimensions and permanent structures. Once you've positioned cabinetry and large appliances, you can then start to explore the more functional elements of the space by adding in clever storage solutions such as larder units, swing-out or pull-out cupboards.

Finally, choose the finishing touches such as splashbacks, handles, worktops, walls and flooring.

Once complete, you can submit the finished 3D design to one of our 100 trusted Kitchen Studio Partners – a national network of hand-selected, independent kitchen studios offering superb customer service – who can help you turn your dream design into a reality.



**HOW TO CREATE THE  
 PERFECT KITCHEN**



Hugo & Co,  
 2019 Studio Partner of the Year

Creating your ideal kitchen is no mean feat. On trend or traditional? Dark or light? There are so many choices to make and consider. To help, we asked **Garyth Hugo, owner of Hugo & Co, our 2019 studio partner of the year**, for some words of wisdom.

When creating the perfect kitchen, style is often where we start and the area many of us tend to focus on.

While style is important, it's not the only thing you should consider. According to Garyth, function is often overlooked when planning a kitchen. "I regularly hear, 'the inside doesn't matter'," he said. "But if you've ever tried to hide utensils out of view and wanted to store a ladle in a drawer that isn't deep enough, you'll know how frustrating this is."

Describing how he helps his customers achieve design and function, Garyth said:

*"I get my customers to think about the area available as squares of space. Say you've got a 3 metre by 5 metre layout, there are 15 squares to fill. So, I suggest they take each one and think how they want to use it, without overfilling it. Considering the area in that way can be really helpful for the customer."*

Another area that's often neglected in the first stages of planning is budget, and moreover, not being prepared to openly discuss a budget with your designer or consultant. Garyth added:

*"Some customers don't want to name a figure, preferring to create a design, then see what it costs. But by starting with a budget, you'll get*

*a more realistic kitchen that meets your needs and gives you best value for what you want to spend. And any designer worth their salt will always aim to impress with what they can do for the budget available."*

When it comes to creating the perfect kitchen, where do you start? Hop over the page for our step by step guide and some more top tips.



Image courtesy of Hugo & Co



# Designing YOUR KITCHEN STEP BY STEP



**Garyth Hugo**  
Owner - Hugo & Co

1

## Budget

Firstly, work out what you're comfortable to spend on your kitchen and don't be afraid to tell your designer. You'll end up with a better design that you'll love and can afford, faster.

### Did you Know?

According to Which? on average, buyers paid between £19,500 and £32,800 for 15m<sup>2</sup> kitchen.



2

## Style

Would you prefer a more modern, contemporary look or a traditional shaker? To help you work out your style, use our Kitchen Personality Quiz at [www.ideasforliving.co.uk](http://www.ideasforliving.co.uk)

### Garyth's Advice

Try to agree on what style you, and anyone else involved in the decision process, like before your first showroom visit.

3

## Layout

You might be starting from scratch, but chances are there are existing features in your kitchen to work around. At this stage, it's all about taking careful measurements of the space, noting existing features that are staying put like windows, waste pipes, and sockets, and drawing up a floor plan.

You can do this roughly to begin with, it's likely your chosen kitchen partner will visit you at home to do the exercise in more detail.

### Garyth's Advice

Measure floor to ceiling height in several places as many of us have uneven floors.



4

## Appliances

Are there existing appliances staying in your kitchen? Add these to your floor plan, making sure you've got exact measurements – and don't forget about space for opening the doors!

If you've got a blank canvas, there are some restrictions to consider. For example, legally there must be 300mm between a sink and an electrical socket.

The serious bit out of the way, if you're getting new appliances, what would you like? Freestanding? Built in?

Are you an avid cook who wants lots of cooking space? What look are you going for? Something to hide away or a retro, statement look?

Also give thought to futureproofing your kitchen with connected appliances and smart technologies.



### Garyth's Advice

See our guide to the latest appliances on page 34



Smeg Cucina compact microwave oven  
535.04.743

5

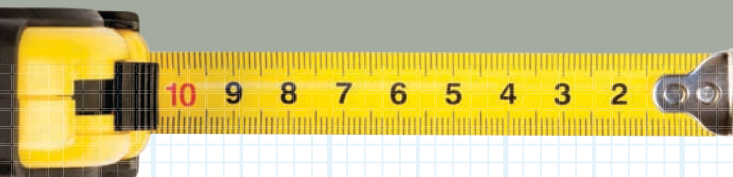
## Cabinetry

Now you've laid out the existing elements you can begin planning your cabinetry. While more traditional options such as base and wall units will naturally spring to mind, also consider how you can make the most of the full height of your room with head height lift up flap options, as well as larder-style units.

Think about items in your home that you may want to store, such as ironing boards and vacuums, and if you cook a lot, you may want to consider a standalone island for all things culinary.



VS COR Flex corner unit with Planero lava grey metal baskets  
548.29.343



# Designing YOUR KITCHEN STEP BY STEP

6

## Internal Details

With the cabinetry decided, you've got the outer shell pretty much planned out, but now for one of the most overlooked parts of the kitchen – the internal details. Start by listing what you like and don't like when you're using your existing kitchen, then think about how you'll use each square metre.

Without proper planning and building in internal fittings, you can end up with a kitchen of empty cabinets that in reality, don't work for you and the items you have. Here's some things to consider:

- Do you want to hide utensils out of view? If so, consider drawer depth. The Grass Drawer System is a brilliant option for storing all your items in one place
- How many large pots and pans do you have? Drawer pan organisers are great for keeping cooking equipment accessible and in order
- How tall are your biggest glasses? This will impact on shelf height. Head height cupboards with lift up flaps are great for occasional glasses
- Do you have small appliances like a coffee maker that you want on display or would you prefer these hidden away? Use corners and fittings such as the Ninka Qanto, a clever vertical rising corner unit, to really make the most of space available

### Garyth's Advice

Can't decide between drawers or a pull-out larder? Look at options such as the Grass Nova Pro Scala – it's the best of both options! and exclusive to Häfele.



### Garyth's Advice

Don't dismiss internal details – they're the difference between a beautiful, functional kitchen and one that's frustrating to live in.



### Garyth's Advice

Plug and play systems like our Loox LED furniture lighting add a wow factor to a kitchen and quickly transform it from a practical place to cook in, to a romantic intimate dining space

7

## Finishes

Now it's time for finishing touches! Start by deciding on your door colours and type. Would you prefer handles, knobs or handleless doors? There's tonnes of statement handles that are the perfect way to make a kitchen stand out.

At this point, also consider lighting as it can totally transform the atmosphere of your room, and colours look very different in different lights. Even if your room gets a lot of natural light, it won't all day and all year round. Plus, you'll need brighter, working lights in the functional areas where you are chopping or reading recipes.

Furniture lighting can be easily added to a design and with huge visual impact. Think about worktops now too. Remember to balance style and practicality, including overall cost. There are some lower budget products out there that deliver on both, including many from our Minerva range.

You can also use splashbacks to create a design statement. Take a look at the range of colours available from AluSplash – a clever aluminium splashback that's easy to clean and keep looking stylish. Finally, select the wall colour and floor finishes that will set off your new kitchen!

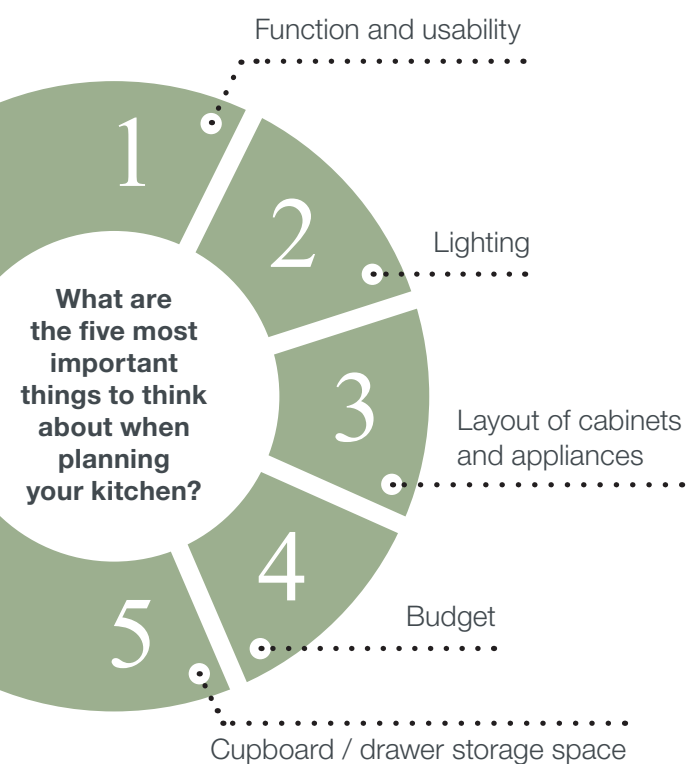
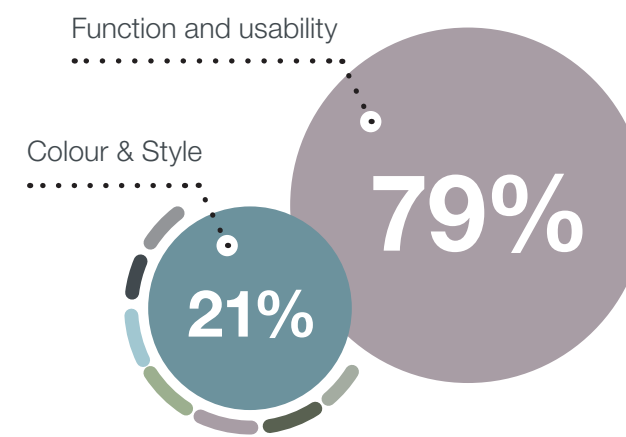
## KITCHEN LESSONS

# KITCHEN LESSONS

*our survey said*

To help you plan your kitchen better, we asked those who've recently renovated theirs: **What would they do differently next time? What advice would they give to others?** Here are their kitchen lessons...

### What is more important when planning your new kitchen?



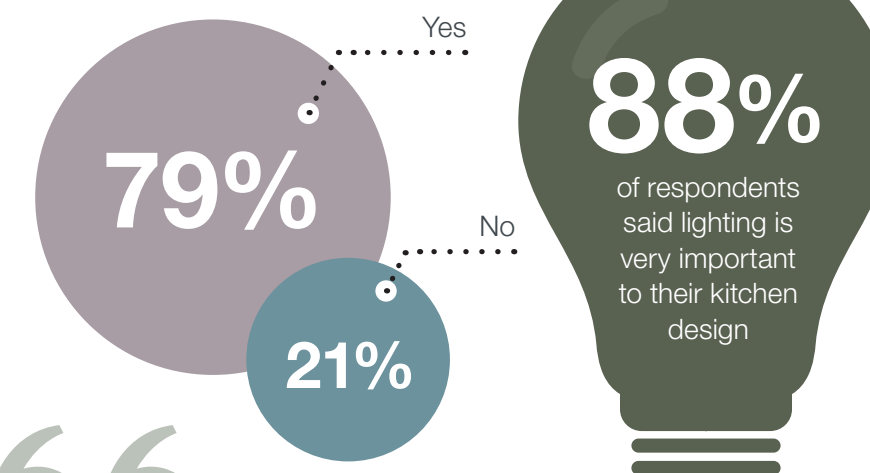
If you were doing it all over again, what would be less important?

How quickly it could be completed

### What are your top tips for others?

- 1 Think about your layout
- 2 Make sure everything ties together (flooring, cupboards, worktops)
- 3 Use hard wearing flooring

### Would you be willing to spend more on your kitchen if it meant you had extra storage?



### IF YOU COULD CHANGE ONE THING ABOUT YOUR KITCHEN, what would it be?

- THE LIGHTING
- WORKTOP SPACE AND HEIGHT
- TO HAVE BUILT-IN BINS
- TO HAVE SOFT CLOSE DOORS
- THE AMOUNT OF STORAGE SPACE
- EASIER ACCESS TO TALL CUPBOARDS
- WORKTOP DESIGN
- QUALITY OF CABINETRY



## HOW TO WORK WITH A *kitchen showroom*



**GARYTH** GIVES HIS TIPS ON HOW BEST TO WORK WITH A KITCHEN SPECIALIST

**Garyth Hugo**  
Owner - Hugo & Co

### *Get professional advice*

- Most people will only get a brand new kitchen once or twice in their lives and it's a big decision, so get professional advice from people who do it daily. They'll help make sure your new kitchen is functional, works for you day-in-day-out, and looks great.
- And remember, specialist doesn't have to mean expensive. A good kitchen designer can work to a specific budget and suggest ways to find a solution within that budget.

### *Do your research*

- The more research you can do into the style of kitchen you like, the better. Pinterest, Instagram and even your friends' and neighbours' homes can be a great source of inspiration
- Tools like the Kitchen Personality Quiz at [ideasforliving.co.uk](https://ideasforliving.co.uk) are a fun way to explore styles
- Use a recognised business. At [ideasforliving.co.uk/studio-locator](https://ideasforliving.co.uk/studio-locator) you'll find your nearest Häfele Studio Partner. These are an elite group of British kitchen studios, handpicked for their dedication to quality, service, and second-to-none design ethos
- Do you want to choose from a range of brands or want a bespoke, made to order kitchen? Different kitchen studios will specialise in different approaches.

### *Prepare for your first appointment*

- Give thought to some key decisions before your first visit:
  - ∞ What budget do you have for the job?
  - ∞ What style kitchens do you like?
  - ∞ How do you need the space to function day-to-day?
- Have you measured and checked the room, existing features like doors, windows, power and water sources? What aspect does your kitchen face? This will affect lighting
- Think about what you like and don't like about your existing kitchen. What frustrates you? What would you like to do in your kitchen that you can't now?



For more advice and inspiration, visit [ideasforliving.co.uk](https://ideasforliving.co.uk)



## Ask the EXPERT

*I don't want tiles in my kitchen because they're annoying to clean but bespoke glass splashbacks and upstands are too expensive. Any ideas?*

*"Traditionally, tiles have been the favoured approach for kitchen splashbacks, but I'd agree, they can be tricky to keep clean between the grout and mould is often an issue. If you'd like a seamless finish like glass but without the price tag, AluSplash is the product for you. Aluminium-based, it gives a beautiful, sleek finish but it's cheaper than glass and a more hygienic alternative to tiles. Fortunately for your fitter, it's also lots easier to install. Ask your local Studio Partner about AluSplash – it's available in 12 stylish colours too."*



**Andrew Billingham**  
Product Group Manager



# Ask the Expert



**Isabel James**  
Product Group Manager

*Q: My kitchen has a lot of head height, but I find tall cupboards hard to reach. How can I make them more functional?*

*A: The Grass Nova Pro Scala Stack Tower sounds like just what you need as it combines the height of a tall larder unit design with pre-assembled drawers that pull out independently to different depths. Plus, because each drawer can hold up to 40kg in weight, you can get loads in it.*

*"The Nova Pro Scala Stack Tower is available in a range of widths, including a 300mm slimline option, and in a choice of colours. Ask your kitchen studio for more information."*



Grass Nova Pro Scala, Stack Tower, stone finish  
554.30.561



Pull out shoe rack  
806.22.401

*My hallway gets really untidy and unsightly, but I've only got the under stairs area for storage. How can I make the most of the space?*

*"A stair cabinet is a great way to use both the height and depth of the space you have available. Starting with the lowest part of the stairs, here I'd opt for a pull-out cabinet as it will give you lots of space, without being difficult to access. As it's likely to be a bit dark under the stairs, make sure you think about lighting too so you're not searching for what you need. Ask your joiner about Loox*

*furniture lighting, our plug and play LED system that's perfect for spaces like this.*

*"For taller areas, you can think of these spaces a bit like a wardrobe and there's lots you can do with the area depending on what you want to store. If it's shoes for instance, I'd opt for a rotating, pull out shoe rack like the one to the left – it's a great way to make the best use of the space.*

*"Then, to keep it all hidden away, ask your joiner to mask it all behind large hinged doors cut to fit the shape and space available."*

# Ask the EXPERT

*Q: I want to create a really clean and tidy utility space in my kitchen, but I don't want – quite literally – my dirty laundry to be on display. How could I build one in without it all being on show?*

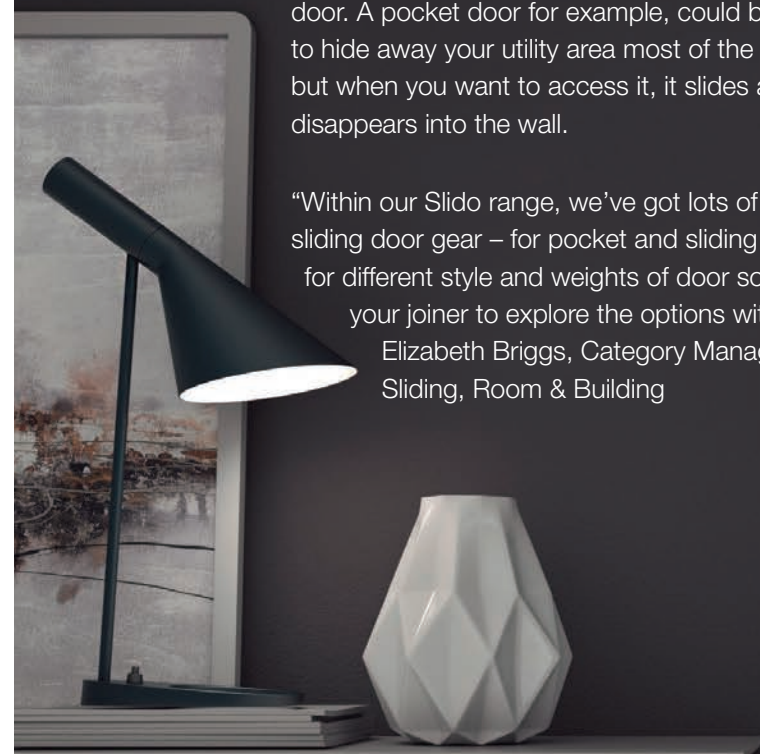
*A: "A sliding or pocket door system would be a great way around this, especially if you don't want or don't have enough space for a swing door. A pocket door for example, could be used to hide away your utility area most of the time, but when you want to access it, it slides and disappears into the wall.*

*"Within our Slido range, we've got lots of different sliding door gear – for pocket and sliding – and for different style and weights of door so ask your joiner to explore the options with you."*

*Elizabeth Briggs, Category Manager – Sliding, Room & Building*



**Elizabeth Briggs**  
Product Group Manager



Slido Motiv



Slido Classic Optimo  
Rever 80 pocket door system

1980

Having started life in Germany in 1923, we opened our doors to our first home in the UK at Butlers Leap in Rugby, Warwickshire.



BACK TO THE 80'S

This year, Häfele is celebrating 40 years in the UK. To mark the occasion, we're taking a look back at what's changed in the world of kitchens since the 1980s and celebrating some of our milestones along the way.

CELEBRATING 40 YEARS HÄFELE UK EST. 1980

1982

Kitchens go country! Light colours, exposed beams and pale woods become popular creating a homely look.



1984

The world of appliances is changing. Colour is out and monochrome is in. There might've been the occasional almond shade too though... remember those?



1998

The late nineties saw the rise of the TV chef and in turn, amateur cooks began taking their inspiration from restaurants, installing professional quality appliances in their kitchens.



2006

Bright, white and beige were the key trends in the mid noughties as kitchens became more and more open plan.



2014

The first app-controlled ovens and connected kitchen appliances appear. The smart, connected home is born!



1981

Just like shoulder pads and hair, the next big thing in kitchens was the island. The reason for their popularity? Partly a reflection of the kitchen becoming a more social space and partly a symbol of social status.



1983

Häfele invents the Minifix .... A huge moment on our timeline! Häfele starts of production of the Minifix connector. Not familiar with the Minifix? We're sure you've used it when assembling furniture from a well-known Swedish retailer...you can thank us later!

HÄFELE



1990

Away with laminate, Formica and wooden work surfaces, in with granite.



1999

We launch Dialock in the UK. This electronic locking system is now a mainstay in the hotel and leisure industry, but increasingly is being used in the home in various settings. For instance, use Dialock to stop children accessing harmful substances or create 'hidden' storage for extra security.

dialock



2009

We launch LOOX lighting in the UK. Our LED furniture lighting range has evolved no end since 2009 - in fact, we're now onto our fifth generation!

LOOX



2019

We unveil our free Kitchen Planning Tool on www.ideasforliving.co.uk. After six easy steps, find out how you'll likely use your kitchen and design a room that is aesthetically pleasing and tailored to your lifestyle.

# SHEDDING A LIGHT ON *lighting*



*Have you ever considered the impact lighting has in your home?*

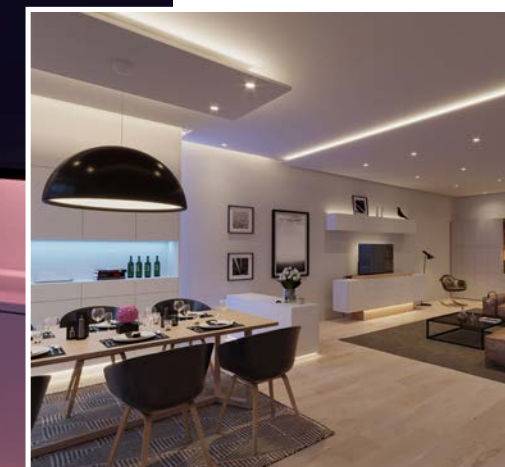
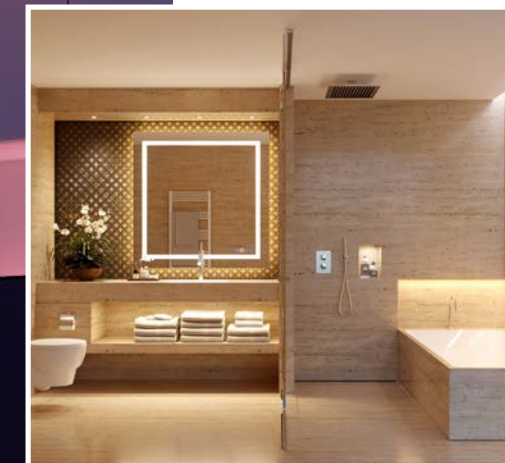
When designing a room, it's often our last thought, but lighting has a huge influence on a space in terms of its functionality and colour and design. But did you also know it affects our mental health and wellbeing too?

In fact, a recent article from Forbes revealed our health can be negatively affected by poor lighting. For example, excessive exposure to white and blue light is known to affect how well we can relax and sleep at night. Poor lighting can also cause eye strain, headaches and anxiety. However, clever and considered use of lighting in our homes can actually improve our health; it can calm, motivate, inspire or even enliven us.

[forbes.com/sites/pragyaagarwaleurope/2018/12/31/how-does-lighting-affect-mental-health-in-the-workplace/#260a251e4ccd](https://forbes.com/sites/pragyaagarwaleurope/2018/12/31/how-does-lighting-affect-mental-health-in-the-workplace/#260a251e4ccd)

The right lighting can also help us feel cooler in the summer and warmer in the winter – even if the temperature stays the same – while lighting that changes with our mood can be used to create a particular atmosphere or even help improve our sleep.

[mentalfloss.com/article/89053/7-ways-lighting-can-make-your-home-happier](https://mentalfloss.com/article/89053/7-ways-lighting-can-make-your-home-happier)



# GETTING LIGHT RIGHT

To help you think about lighting in your home, as well as understand some of the technical aspects, our glossary explains key terms.

## GLOSSARY OF LIGHTING TERMS

<b>ACCENT LIGHTING</b>	<b>COOL WHITE</b>
Directional lighting used to focus light on a particular object or area	White with a colour temperature in the region of 4000K.
<b>AMBIENT LIGHTING</b>	<b>DRIVER</b>
The overall lighting present in an area	An electrical device that regulates the power to an LED
<b>BEAM ANGLE</b>	<b>LUMENS</b>
The angle at which light is distributed from the lamp or luminaire	A measure of visible light that's given off by a source.
<b>COLOUR TEMPERATURE</b>	<b>WARM WHITE</b>
The colour appearance of a light source. The higher the colour temperature, the 'cooler' the appearance. Colour temperature is measured in Kelvins (K)	White with a colour temperature of around 3000K. Warm white is a yellow-white light similar to halogen lighting



Fortunately, getting lighting just right doesn't have to be difficult. The key thing is to think about it at the start when planning a space with your designer, rather than at the end...or not at all.

Your designer will ask you some key questions about how you'll use the space and then develop a lighting design scheme to suit.

To help them help you, we've just launched a Lighting Design Service for showrooms where lighting experts can create a custom design scheme in just seven days. Ask your designer for more details.

# SMARTER SPACES

*As homes get smaller, space remains at a premium and more and more households regularly have multiple generations residing together, the need to be smarter with space is like never before. We explore ways to make your space work harder and make sure you get as much use as possible out of every square metre.*

It's safe to assume that everyone wishes they had more space in their home and for many of us, this problem is only becoming more challenging. Compared to the

previous decade, homes built from 2010 onwards are over 4m<sup>2</sup> smaller (according to LABC), so if you're a new-home owner, making the most of your space is likely to be a daily grind.

With rising house prices and an ageing population, more families are also coming together under one roof, with three generations all sharing the same space and all with different wants and needs. This too poses a conundrum on how to make areas flexible for changing requirements.

Fortunately, there are lots of clever products out there that can help. By understanding the options, and with some lateral thinking, you can make your home more adaptable and ensure you're maximising every space to its fullest.



## Did you know?

The Office for National Statistics reported around a **30%** rise in three generation households between 2001 and 2013.

Gola Profile Handle  
126.36.940





# SMARTER SPACES

## Get smarter with sliding

One of these products is sliding door hardware. Giving you seamless functionality, optimum storage capacity and a sleek finish, sliding doors are becoming more and more popular.

Instead of traditional hinges, sliding door gear hardware allows a door to be opened by sliding to the side. The most popular type of system is called a 'top hung' system, where a door is hung by two hangers at the top along a concealed track. At each end is a track stopper to absorb any impact if it's slammed and to hold the door in the open or closed position. On some systems, you can also choose a soft close mechanism like you'd get on a kitchen drawer.

As well as sliding, there's also pocket doors. Where a standard hinged door needs around seven feet of unobstructed space to open and close, that's not required with a pocket. These clever systems slide the door into the wall instead.

## Where can you use sliding doors?

Sliding doors can be great space savers for wardrobes, between rooms like a lounge and dining area or to hide away areas like utility rooms.

## Why sliding?

It's all about the extra space! As the doors don't open into a room, you save an average of 1270mm of operating space per door, or up to five metres if five sliding doors are used per house.

Sliding doors are also great when you want to separate a space, but don't want to do it permanently. For example, when the kids are back from university, use a sliding door to turn an open plan lounge/diner into two distinct areas: one peaceful area for you to relax and another space for them to do their own thing.

## What's available?

We offer a huge range of sliding door gear but one of our favourites is the Eku Frontino 40. This premium system is suitable for wardrobes or tall cabinets and opens completely, meaning you can access exactly what you need with ease.

If you're after a pocket door, look no further than the Slido Classic Optimo system, smart and stylish, it's also incredibly space saving!

Make a feature of your sliding door with the Rustic Flat Track. With exposed steel straps it adds a traditional look that's great for period properties.



Hawa-Folding Concepta 25, for folding and pivoting cabinet doors, 408.31.000



E-drive for FREE flap 1.7 E, electric single door flap fitting 372.91.099

## Other space saving ideas

As well as considering sliding doors, think about these clever options.

Use the height of a room to maximise storage. Our FREE range includes a variety of hinge types including electronic ones and feature a 25-year guarantee.

Use every nook, cranny and corner of your home with products like the Ninka Qanto. This clever device rises to give vertical storage and has a smooth ABS lifting mechanism. There's also automatic LED lighting for the middle and lower trays as they rise and descend.

Can't find the exact type, style or size of storage you need? Create your own! Ask your carpenter or designer about our Matrix Box drawer system. With full extension runners you can access the content with ease and vertical sides for more internal space. There's also a range of decorative drawer sides for extra personalisation.



Ninka Qanto, Corner Storage Unit 542.72.421

# What's new in APPLIANCES



**Steph Kerr**  
Senior Product Group Manager

## MERCURY: ANOTHER PLANET

Part of the AGA Rangemaster group, Mercury features high-end domestic range cookers with a timeless style.

Manufactured in the UK, they're made to the highest quality and are really functional too.

You can choose between a powerful gas hob or sleek-look induction top, and Mercury cookers have two large high-performance ovens, as well as a soft touch storage drawer to provide ample space for both cooking and keeping plates warm.



Mercury 1000 mm Dual Fuel Range Cooker, Black liquorice (gloss)  
533.61.010



Mercury 1000 mm Electric Induction Range Cooker, Cream Oyster  
533.61.004



Mercury 1200 mm Dual Fuel Range Cooker, Ash Black (satin)  
533.61.051



# MERCURY



Grohe Minta Smartcontrol Tap with pull out spray  
Polished chrome  
569.25.200

## PUSH IT

The new GROHE Smartcontrol is sleek, streamline and clever too.

Instead of struggling to turn levers with wet or full hands, use its innovative push-operation to start and stop water flow with your wrist or elbow. Turning the same button alters the flow, and temperature control is via a twist of the valve on the tap's body.

There's a water-saving option, as well as a powerful jet, and integrated magnets for seamless docking of the spray head.



Grohe Essence Smartcontrol Tap with pull out spray available in a wide variety of finishes, see website for details

# What's new in APPLIANCES

## TWO IN ONE

Smeg Portofino range cookers are available in two configurations and eight vibrant colours, including a dual oven cavity option that's perfect for cooking meal elements at different temperatures.

There are dual fuel and electric induction versions that include 20 automatic programmes - including Pyrolytic cleaning. Budding chefs will also enjoy its rotisserie kit, perfect for the Sunday roast!



Smeg Portofino 1200 mm mixed fuel cooker, stainless steel 536.64.903



Smeg Portofino 900 mm dual fuel cooker  
Yellow 534.64.846  
Black 534.64.841  
Olive green 534.64.840



Smeg Portofino colour options

# STYLE & SUBSTANCE

Combine on trend metallic styling and clever design with Smeg's Dolce Stil Novo. With an elegant copper trim; these products are uniquely styled and are the first of their kind in the market.

The Dolce Stil Novo range includes ovens, a coffee machine, hobs, hoods and a wine cooler.

Setting the standard for sleek design, HOB D from Smeg is a powerful multizone induction hob with state-of-the-art extraction in a single appliance. It's also incredibly beautiful and sleek!



Smeg induction hobs with integrated extraction, 830 mm Dolce Stil Novo copper trim 536.64.151

# Recipes

## Beef & vegetable casserole

A traditional braised beef stew with thick, rich gravy – an ideal recipe for cheap cuts, as slow-cooking guarantees a tender dish. From BBC Good Food

Serves: 5

⌚ Prep: 15 mins  
Cook: 3 hrs - 3 hrs and 50 mins

### Ingredients

- 2 celery sticks, thickly sliced
- 1 onion, chopped
- 2 really big carrots, halved lengthways then very chunkily sliced
- 5 bay leaves
- 2 thyme sprigs, 1 whole and 1 leaves picked
- 1 tbsp vegetable oil
- 1 tbsp butter
- 2 tbsp plain flour
- 2 tbsp tomato purée
- 2 tbsp Worcestershire sauce
- 2 beef stock cubes, crumbled
- 850g stewing beef (featherblade or brisket works nicely), cut into nice large chunks

### Method

1. Heat oven to 160C/140C fan/gas 3 and put the kettle on.
2. Put 2 thickly sliced celery sticks, 1 chopped onion, 2 chunkily sliced carrots, 5 bay leaves and 1 whole thyme sprig in a flameproof casserole dish with 1 tbsp vegetable oil and 1 tbsp butter.
3. Soften for 10 mins, then stir in 2 tbsp plain flour until it doesn't look dusty anymore, followed by 2 tbsp tomato purée, 2 tbsp Worcestershire sauce and 2 crumbled beef stock cubes.
4. Gradually stir in 600ml hot water, then tip in 850g stewing beef and bring to a gentle simmer.
5. Cover and put in the oven for 2hrs 30 mins, then uncover and cook for 30mins – 1hr more until the meat is really tender and the sauce is thickened.
6. Garnish with the picked leaves of the remaining thyme sprig.



HÄFELE

*You've got the appliances, now put them to use! These recipes are great options to try in your Mercury oven or, if cooking both at the same time, in your Smeg Portfino dual cavity!*

## Plum crumble

Use two types of sugar and ground almonds for the perfect crunchy crumble topping, layered on top of cinnamon-spiced plums. From BBC Good Food

⌚ Prep: 15 mins  
Cook: 40 mins

### Ingredients:

- 800g ripe cooking plums, such as Victoria or dessert plums, halved and stoned
- 50g light brown sugar
- finely grated zest 1 orange
- 1 tsp ground cinnamon
- 1 tsp plain flour
- For the crumble
- 250g plain flour
- 150g butter
- 80g caster sugar
- 80g demerara sugar
- 50g ground almonds

### Method


1. Heat the oven to 200C/180C fan/gas 6. Put the plums into the base of a shallow gratin dish about 28cm long. Mix together the sugar, orange zest, cinnamon and flour and sprinkle over the plums. Trickle over 2 tbsp water.
2. Put all the crumble ingredients into a food processor, and using the pulse button, whizz until the mixture just starts to clump together. Take care not to over process at this stage. Alternatively, rub the butter into the flour using your hands and then stir in the other ingredients.
3. Scatter the crumble over the plums and bake in the oven for 30–40 mins until golden brown. Leave for about 15 mins before serving with custard or cream.


### Goes well with:

- > Homemade custard
- > Cinnamon ice cream



Follow us for more inspiration . . . . .

 ideasforliving  
[www.instagram.com/ideasforliving](http://www.instagram.com/ideasforliving)

 ideasforlivinguk  
[www.facebook.com/ideasforlivinguk](http://www.facebook.com/ideasforlivinguk)

# REVOLUTIONARY KITCHEN *Splashbacks*

AN INNOVATIVE ALTERNATIVE TO GLASS,  
ACRYLIC AND TILED SPLASHBACKS,

AluSplash offers a range of eco-friendly, sleek and cost-effective solutions, designed to provide a seamless run of colour in the kitchen with an eye-catching, high-gloss finish.

AluSplash is fire resistant, so is safe to use behind all hobs, including gas burners.

Available in a wide variety of colours, you'll be spoilt for choice.

Contact your local studio partner for more details:  
[ideasforliving.co.uk/studio-locator](http://ideasforliving.co.uk/studio-locator)



 AluSplash<sup>®</sup>

brought to you by

**HÄFELE**