



2021 BUILDERS MERCHANTS KITCHEN PRODUCTS & APPLIANCES

WELCOME

Thank you for choosing Häfele as your business partner, we will be proud to support your business at every stage. Please feel free to browse more information on the selection of services we offer on the following pages. In the meantime, if you need any help then please just get in touch, we are here to help.



CRAIG CHAMBERS
REGIONAL DIRECTOR
WESTERN EUROPE

A handwritten signature in blue ink, appearing to read 'ced', with a long horizontal stroke extending to the right.

WHY HÄFELE?

We understand that your projects don't start with a part number and end with a parcel, which is why we are here to support you every step of the way.

Today, there are over 400 of us in the UK team, with many of us previously being Häfele customers ourselves. This means that we can advise you properly on both the best solutions available from our vast product range as well as our industry-leading services. Plus, with over 25,000 globally-sourced products in stock, and **free next day delivery***, you will find exactly what you need all in one place.

FIND US ON

OUR SERVICES

We know you are vigilant when selecting technical products, and that support from your supplier is your priority. With nearly 100 years of expertise in the industry, we're here to support you at every stage.

Our Customer Service Charter is our commitment to going above and beyond when supporting you, providing you with the outstanding services that make up the Häfele experience.

Find out more about our services in our charter, by visiting the services section of hafele.co.uk or by contacting Customer Support on **0800 171 909**.

Find out more about our services:

Click on the icon to visit hafele.co.uk/services for more information or call our Customer Support Team on **0800 171 909**.

#TheHäfeleExperience

*Ts & Cs apply. See hafele.co.uk for details.

2021 BM KITCHEN PRODUCTS & APPLIANCES BROCHURE. © Häfele U.K. Ltd 2021. Dimensional data not binding. We reserve the right to alter specifications without notice.



HÄFELE.

A worldwide respected name in the industry Häfele has been helping people make the most of their homes and buildings for nearly 100 years. We work closely with the leading brands in the industry to bring you the highest quality products and the latest design innovations, all backed by our expertise and commitment to excellent customer service.

SIMPLIFYING SLIDING & LIGHTING.

WITH THE SPECIFICATION SERVICES BY HÄFELE.

Here at Häfele we want to make our vast range of products as easy to specify as possible. We have made it easier to select and order the products you need with our Sliding Door and Lighting Specification services. Plus save time and money by combining our Specification services with Häfele to Order (HtoO). Your products can be cut, assembled, packed and shipped to your bespoke requirements using HtoO.



CONTACT TECHNICAL TEAM -

Give our technical team a ring on 0800 171 2908. One of our technical experts would be more than happy to help with your project no matter how big or small. Don't forget to ask about our HtoO services, including cutting, assembling and packing.



SPECIFYING -

Our technical experts will talk you through our extensive range of sliding door gear and lighting, recommending products to suit your project needs, put together a product list and a priced quote, including a small charge for HtoO if requested.



YOU APPROVE, WE DELIVER -

Once you're happy with your products and quote, simply approve the order and we will deliver the products to your address.

Contact the Hafele Technical Team:
0800 171 2908
technical.support@hafele.co.uk

HÄFELE LIFETIME GUARANTEE

At Häfele, we recognise the importance of quality, function and design when it comes to making furniture.

That's why we have the Häfele Lifetime Guarantee across the products that we manufacture, or bring to you under the Häfele brand name.

All products that carry a Häfele Lifetime Guarantee have met our quality standards and have been tested according to the relevant industry certification.

We are happy to guarantee that the product will function as intended, with no loss of operating quality, for the guaranteed lifetime of that product.

WHAT IS COVERED BY THE HÄFELE GUARANTEE?

The products listed in this Directory are included in the guarantee, valid for the following numbers of years:

Loox	7 years
Ixconnect	25 years
Matrix Box	25 years
Free	25 years
Hinges	25 years
Startec	10 years
Slido	10 years

The Häfele Lifetime Guarantee covers normal use of the products in a domestic environment – or in commercial environments our standard 12 month guarantee would apply – please contact our customer service team for more information.

HOW DO I CLAIM?

It's easy to make a claim against our Guarantee. The holder of the product invoice can simply e-mail hafeleguarantee@hafele.co.uk with details of the invoice, the fault and supporting photography, and our team will handle the query from there.

For more information please visit our website or call our Customer Support Team on **0800 171 2909**.



This logo indicates the name of the product range covered by the guarantee and how long the guarantee is.



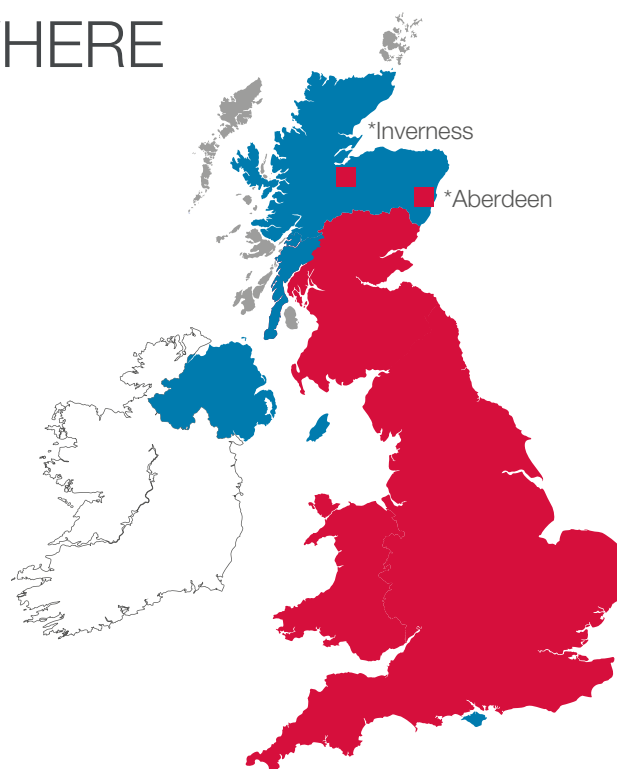
The Häfele Lifetime Guarantee logo appears next to every product that is included, both online and in our catalogues.

*Ts & Cs apply. See hafele.co.uk for details.



DELIVERY WHEN AND WHERE YOU NEED IT

- Standard delivery and premium options available
- 72 hour delivery, premium options not available
- *Inverness & Aberdeen: Please check services available, dependent on postcode area.
- 3-5 days delivery
- Delivery not available



FREQUENTLY ASKED QUESTIONS

CAN I SCHEDULE MY DELIVERY?

Yes, just enter the date of delivery you would like in the 'Schedule delivery for' box at stage 2 of the checkout process online or speak to your Sales Advisor. Please note if you schedule delivery for the 1st or 2nd of the month you may be invoiced in the previous month.

CAN I HAVE MY ORDER DELIVERED TO A DIFFERENT ADDRESS?

Provided it is in the UK and has a full postcode, Häfele are able to deliver the item for you. Please enter the alternative delivery address in stage 2 of the checkout process online or speak to your Sales Advisor.

WHAT TIME WILL MY DELIVERY ARRIVE?

Standard deliveries are made Monday-Friday between the hours of 8.00am-6.00pm. For Saturday delivery you need to request the 'Next Day Saturday by 12' service. We do not deliver on Bank Holidays.

WHAT IF NO-ONE IS AVAILABLE TO SIGN FOR MY DELIVERY?

All goods must be signed for. We ask you check all goods prior to signing for delivery and mark the delivery note appropriately if goods are received damaged. 'Unchecked' is not acceptable if a claim is necessary.

WHAT IF I ORDER ON A WEEKEND OR BANK HOLIDAY?

All orders received outside of our working hours will be dispatched by Häfele the next working day subject to availability.

CAN I COLLECT MY GOODS?

Collection of ordered goods is available from our Distribution Centre in Rugby between the hours of 9.00am-5.30pm.

WHAT IF I NEED TO RETURN MY PRODUCTS?

Should you need to return your product to us, we offer a 0% handling fee and claims can be processed online at hafele.co.uk/returns or by emailing customer.service@hafele.co.uk.

Häfele UK Ltd
Swift Valley Industrial Estate
Rugby
Warwickshire
CV21 1RD

ORDER UP TO 5PM FOR **FREE** NEXT DAY DELIVERY.*

We pride ourselves on ensuring our products reach their destination as quickly and reliably as possible once they are ordered. An intense focus on service is just one of the principles that have guided our company from the start.

Today more than 25,000 products are available for shipping from Häfele UK with FREE* next day delivery, and additional products are available for delivery within 10 working days.

Created from over 30 years of expansion in the UK, our high-bay storage facility now boasts 20,000 pallet spaces and we can dispatch across the majority of the UK for delivery within 24 hours**.

In addition, we have structured our administration and warehouse systems to ensure that when you order by 5pm Monday – Friday, we'll get your delivery out to you the very next day. The best news is that there's no charge whatsoever.*

Should you need to return your product to us, we offer a 0% handling fee and claims can be processed online at hafele.co.uk/returns or by e-mailing customer.service@hafele.co.uk.

HOW TO ORDER



Free Phone:
0800 171 2909



Email:
info@hafele.co.uk



Order Online 24/7:
hafele.co.uk

*Standard Next Day delivery charge (except NI, Highlands and offshore) is £8.95). Free delivery for any order - no minimum spend. Delivery terms apply.

**Inverness and Aberdeen: Please check services available, dependent on post code area. Excludes Northern Ireland, Highlands & Offshore deliveries and products delivered direct. UK deliveries only. Dispatch subject to account status. Free delivery for orders over £50 excluding VAT. Delivery terms apply.

CONTENTS

SPLASHBACKS



2021 BM KITCHEN PRODUCTS & APPLIANCES BROCHURE, © Häfele U.K. Ltd 2021. Dimensional data not binding. We reserve the right to alter specifications without notice.

AluSplash™ vs glass, acrylic and tiled splashbacks

FEATURES	AluSplash®	GLASS	ACRYLIC	TILES
Easy Maintenance	✓	✓	✓	✗
Fire Resistance	✓	✓	✗	✓
DIY & Easy Fabrication	✓	✗	✓	✗
Quick Installation	✓	✗	✓	✗
Affordability	✓	✗	✓	✓
Durability	✓	✗	✓	✓
Formability	✓	✗	✓	✗
Can be V-grooved & folded around the corners	✓	✗	✗	✗

Click on the icon to watch the AluSplash™ video on the Häfele YouTube channel

FEATURES



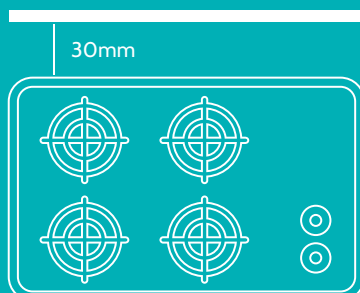
Safe, hygienic & low maintenance

- Grout free and non-porous
- Dirt and grime can be easily wiped and cleaned with a microfibre cloth
- Non-toxic and lead-free paint surface
- Will not shatter or crack like glass
- Easy to clean and maintain



Compatible with all hobs (fire rated)

- Fire rated and safe to use behind gas hobs, unlike acrylic splashbacks
- Suitable to be used behind all popular hobs
- Maintain a 30mm / 1.18" distance from the edge of the hobs



30mm / 1.18"



Eco-friendly

- 100% post-consumer recyclable
- Non-toxic and lead-free
- Requires less energy to produce than glass splashbacks
- No emissions of greenhouse gases during production



Quick & easy to install

- Does not require expensive professional installation
- Fabricate with normal wood working tools
- Can be installed 3 times faster than tile splashbacks
- Can be v-grooved & folded around the corners, without joints
- Easy to make cut outs for electrical sockets
- Full range of edge and corner profiles available for a clean finish

ALUSPLASH™ SPLASHBACKS IN METALLIC FINISHES

AluSplash™ is an advanced aluminium-based splashback and wall panel, which is eco-friendly, durable, cost effective, and fire-resistant. In a range of metallic finishes.



Metallic Warm grey



Metallic Olive Green



Metallic petrol blue



Metallic warm grey



Metallic latte



Metallic blueberry



Metallic black



Metallic olive green



Metallic ice white



Metallic ocean wave



Metallic juicy red



Metallic totally teal



Metallic brushed steel



Metallic space silver



Alusplash composition - High gloss paint surface on aluminium with fire resistant core

Metallic AluSplash™ aluminium splashbacks, 800 x 600 mm



- > 800 x 600 x 4 mm
- > Includes:
 - 1x AluSplash splashback, 800 x 600 x 4 mm
 - 2x Edge profiles, 800 mm, with 3 m double sided tape for installation
- > Dual finish - different colour finish to each side
- > Aluminium with fire resistant core
- > Order qty: 1 pc

Finish	Cat. No.
Metallic Petrol blue/Warm grey	564.53.011
Metallic Latte/Blueberry	564.53.012
Metallic Black/Olive green	564.53.013
Metallic Ice white/Ocean wave	564.53.075
Metallic Juicy red/Totally teal	564.53.014
Metallic Brushed steel/Space silver	564.53.160

Metallic AluSplash™ aluminium splashbacks, 800 x 900 mm



- > 800 x 900 x 4 mm
- > Includes:
 - 1x AluSplash splashback, 800 x 900 x 4 mm
 - 2x Edge profiles, 800 mm, with 3 m double sided tape for installation
- > Dual finish - different colour finish to each side
- > Aluminium with fire resistant core
- > Order qty: 1 pc

Finish	Cat. No.
Metallic Petrol blue/Warm grey	564.53.015
Metallic Latte/Blueberry	564.53.016
Metallic Black/Olive green	564.53.017
Metallic Ice white/Ocean wave	564.53.076
Metallic Juicy red/Totally teal	564.53.018
Metallic Brushed steel/Space silver	564.53.161

Metallic AluSplash™ aluminium splashbacks, 610 x 3050 mm



- > 610 x 3050 x 4 mm
- > Dual finish - different colour finish to each side
- > Aluminium with fire resistant core
- > Order qty: 1 pc

Finish	Cat. No.
Metallic Petrol blue/Warm grey	564.53.007
Metallic Latte/Blueberry	564.53.008
Metallic Black/Olive green	564.53.009
Metallic Ice white/Ocean wave	564.53.155
Metallic Juicy red/Totally teal	564.53.010
Metallic Brushed steel/Space silver	564.53.165

YOU ALSO NEED:



INSTALLATION PACK
Page 17



PROFILES
Page 16

ALUSPLASH™ SPLASHBACKS IN FLAT COLOUR FINISHES

AluSplash™ is an advanced aluminium-based splashback and wall panel, which is eco-friendly, durable, cost effective, and fire-resistant



Latte



Silver brushed



Warm grey



Petrol blue



Aubergine



Totally teal



Spanish red



Grey lavender



Ebony



Bright olive



Grey mocha



Bluebird



Space silver



Blueberry



Ice white



Ocean wave



Alusplash composition - High gloss paint surface on aluminium with fire resistant core

2021 BM KITCHEN PRODUCTS & APPLIANCES BROCHURE, © Häfele U.K. Ltd 2021. Dimensional data not binding. We reserve the right to alter specifications without notice.

AluSplash™ aluminium splashback and edge profile sets, 800 x 600 mm



- > 800 x 600 x 4 mm
- > Includes:
 - 1x AluSplash splashback, 800 x 600 x 4 mm
 - 2x Edge profiles, 800 mm, with 3 m double sided tape for installation
- > Dual finish - different colour finish to each side
- > Aluminium with fire resistant core
- > Order qty: 1 set

Finish	Cat. No.
Latte/Brushed steel	564.53.005
Warm grey/Petrol blue	564.53.055
Aubergine/Totally teal	564.53.085
Spanish red/Grey lavender	564.53.025
Ebony/Bright olive	564.53.035
Grey mocha/Bluebird	564.53.045
Space silver/Blueberry	564.53.065
Ice white/Ocean wave	564.53.075

AluSplash™ aluminium splashback and edge profile sets, 800 x 900 mm



- > 800 x 900 x 4 mm
- > Includes:
 - 1x AluSplash splashback, 800 x 900 x 4 mm
 - 2x Edge profiles, 800 mm, with 3 m double sided tape for installation
- > Dual finish - different colour finish to each side
- > Aluminium with fire resistant core
- > Order qty: 1 set

Finish	Cat. No.
Latte/Brushed steel	564.53.006
Warm grey/Petrol blue	564.53.056
Aubergine/Totally teal	564.53.086
Spanish red/Grey lavender	564.53.026
Ebony/Bright olive	564.53.036
Grey mocha/Bluebird	564.53.046
Space silver/Blueberry	564.53.066
Ice white/Ocean wave	564.53.076

AluSplash™ aluminium splashbacks, 545 x 3050 mm



- > 545 x 3050 x 4 mm
- > Dual finish - different colour finish to each side
- > Aluminium with fire resistant core
- > Order qty: 1 pc

Finish	Cat. No.
Latte/Brushed steel	564.53.001
Warm grey/Petrol blue	564.53.051
Aubergine/Totally teal	564.53.081
Spanish red/Grey lavender	564.53.021
Ebony/Bright olive	564.53.031
Grey mocha/Bluebird	564.53.041
Space silver/Blueberry	564.53.061
Ice white/Ocean wave	564.53.071

YOU ALSO NEED:

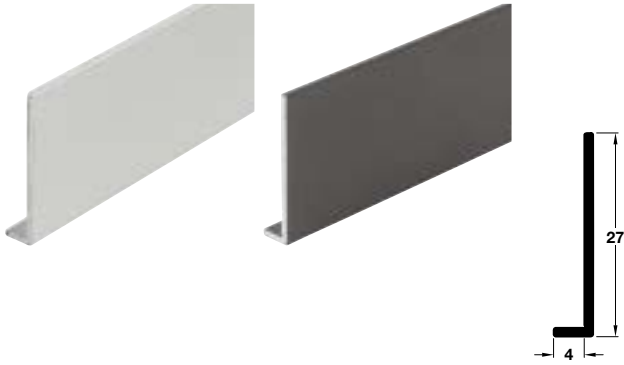


INSTALLATION PACK
Page 17



PROFILES
Page 16

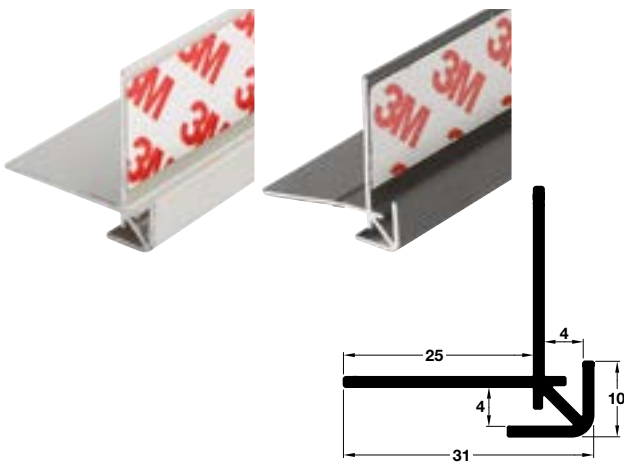
AluSplash™ edge profile



- > With double sided tape for installation
- > Aluminium
- > Order qty: 1 pc

Length	Silver	Anthracite
545 mm	564.53.790	564.53.730
610 mm	564.53.791	564.53.731
800 mm	564.53.793	564.53.733
3050 mm	564.53.919	564.53.319

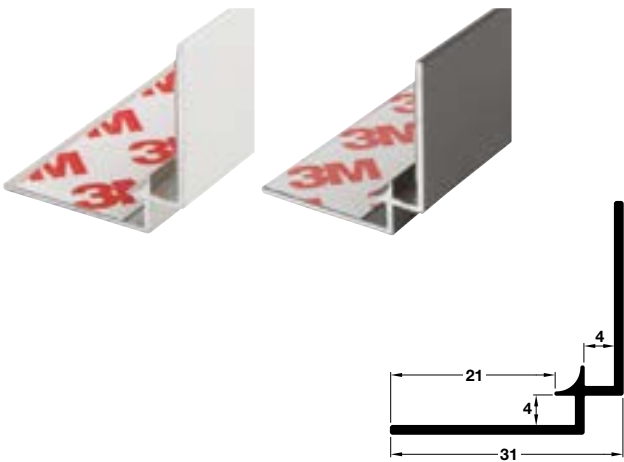
AluSplash™ external corner profile



- > With double sided tape for installation
- > Aluminium
- > Order qty: 1 pc

Length	Silver	Anthracite
545 mm	564.53.890	564.53.830
610 mm	564.53.891	564.53.931

AluSplash™ internal corner profile



- > With double sided tape for installation
- > Aluminium
- > Order qty: 1 pc

Length	Silver	Anthracite
545 mm	564.53.990	564.53.930
610 mm	564.53.991	564.53.831

AluSplash™ joining profile



- > Used to join two Alusplash panels together with a seamless finish
- > 45 x 1 mm
- > With 2x 3 m double sided tape for installation
- > Order qty: 1 pc

Length	Cat. No.
450 mm	564.53.999
540 mm	564.53.998

AluSplash installation pack



1x Ø 160 mm fine trim saw blade



1x Trend 45° V groove cutter



5x Jigsaw blades

- > Set includes:
- 1x 000.49.082 Fine trim saw blade Ø 160 x 1.6 x 20 mm
 - 1x 002.19.263 Trend 45° V groove cutter
 - 5x 000.60.185 Festool HS 60/2 Bi jigsaw blades
 - 1x 007.81.111 Tesa double sided PE foam tape, 25 x 1.1 mm x 25 m
 - 3x 003.50.084 Silirub 1 universal silicone clear 300ml
 - 2x 005.58.300 Soft foam sanding pad, 120 x 98 x 13 mm, fine
 - 20x 006.90.971 Packing shims light duty, 55 x 43 x 1.5 mm, white
 - 8x 007.64.110 Disposable gloves Vinyl, large
 - 1x 007.32.135 AluSplash microfibre cloth, 310 x 285 mm
 - 1x 007.32.131 VuPlex® plastic cleaner, 200g
 - 1x 007.81.105 Tesa low tack masking tape, 50 mm x 50 m
- > Order qty: 1 set



1x Tesa double sided foam tape



3x Silirub silicone clear



2x Sanding pad



20x Packing shims



8x Disposable gloves



1x AluSplash microfibre cloth



1x Vuplex® plastic cleaner



1x Tesa masking tape

*Vuplex is suitable only for use with AluSplash Essentials (High Gloss) & Elegance (Metallics) ranges. For AluSplash Elements (Matt textured), please clean with water and a microfibre cloth

	Cat. No.
Installation pack	000.49.089

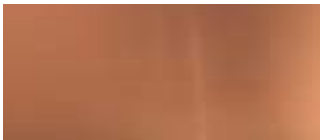
COPPER

A luxurious warm metal that will enhance the application it's designed for. A combination of worktops, upstands and splashbacks providing an anti-bacterial and microbial surface is perfect for restaurant, bar and family living.

Copper worktops, splashbacks and upstands



Copper will oxidise over time and will discolour by varying degrees. Most people accept this will happen and like the different patinas that appear (ring marks discolouration etc.)

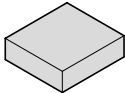


New brushed copper



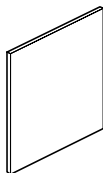
Copper will change over time and take on a naturally occurring patina

Square edge



Splashbacks

0.7mm thick brushed copper wrapped onto 9.0mm thick MRMDF
750 x 600 x 7mm
750 x 900 x 7mm



Installation and modification advice

- Leave on the protective film
- Add masking tape to the area to be cut
- Draw out the cutting line
- Drill a hole to fit a jigsaw blade to cut round
- A drop of oil may be needed on the blade
- > Care should be taken when handling and installing these products. For your safety, we recommend that hands are protected from unfinished edges and corners
- > Due to copper's natural softness, please be aware that the copper products may have some light scratching underneath the protective plastic covering. We cannot guarantee the copper products will be free from scratches



For help, advice and ordering of bespoke sizes of copper worktops, splashbacks and upstands please get in touch with our Technical Sales Team, 0800 171 2908 or technicalsupport@hafele.co.uk

Worktops

- > 1.2 mm thick copper wrapped onto an 18.0 mm thick solid board then an 18.0 mm lattice of MRMDF core (Moisture Resistant MDF), brushed copper finish, brushed effect runs horizontally. Front and both end edges are folded down and back underneath for safety, with the two corners welded and dressed (please note the dressed corners may look slightly different to the original copper but will soon mellow to look the same)

Upstands

- > 0.7 mm thick copper wrapped onto 9.0 mm thick MRMDF core (Moisture Resistant MDF), brushed copper finish, brushed effect runs horizontally. All four edges are folded and unwelded

Splashbacks

- > 0.7 mm thick copper wrapped onto 9.0 mm thick MRMDF core (Moisture Resistant MDF), brushed copper finish, brushed effect runs horizontally. All four edges are folded and unwelded

Storage

- > We recommend that the plastic coating protecting the copper must be left intact until installation is completed. The copper should always be kept flat prior to fitting and in a warm and moisture free environment

Fitting

- > Copper worktops should only be fitted in areas that experience normal cooking ranges of temperature and humidity. Particular care should be taken in newly built areas to ensure a stable atmosphere. All windows/doors should be in place, plasterwork fully dried and major works completed prior to installation
- > Use adhesive to mount upstands and splashbacks to wall - order separately: Assembly adhesive, 310 ml tube, Cat. No. 003.50.100

Cleaning and care

- > Chlorides such as bleach or common salt and acids of any kind can damage all grades of copper surfaces. If a spillage occurs rinse immediately and thoroughly with plenty of fresh water and then dry with a soft cloth
- > To maintain the best appearance of your copper worktops, only use warm water and a mild detergent ensuring that the surface is rinsed thoroughly and then dried with a soft cloth
- > Copper will oxidise over time and will discolour by varying degrees. Most people accept this will happen and like the different patinas that appear (ring marks discolouration etc.). You can always bring copper back to a flat finish by gently rubbing over the surface with wire wool or similar products



10 Year Warranty

Item	Copper
Worktop 1000 x 600 x 37 mm	564.12.081
Worktop 1200 x 600 x 37 mm	564.12.082
Worktop 1400 x 600 x 37 mm	564.12.083
Worktop 1600 x 600 x 37 mm	564.12.084
Worktop 1800 x 600 x 37 mm	564.12.085
Splashback 600 x 750(H) x 10 mm	564.10.080
Splashback 900 x 750(H) x 10 mm	564.10.081

STAINLESS STEEL

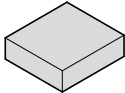
Primarily used in a commercial environment, stainless steel worktops are now becoming a popular choice for the domestic kitchen. To complete the product offering, we offer upstands and splashbacks which are already fashionable.

Stainless steel worktops, splashbacks and upstands



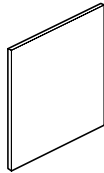
Brushed stainless steel

Square edge



Splashbacks

0.9mm thick stainless steel wrapped onto 9.0mm thick MRMDF
750 x 600 x 7mm
750 x 900 x 7mm



Worktops

- > 1.2 mm thick Grade 304 stainless steel wrapped onto an 18.0 mm thick solid board then an 18.0 mm lattice of MRMDF core (Moisture Resistant MDF), brushed effect runs horizontally. Front and both end edges are folded down and back underneath for safety, with the two corners welded and dressed

Upstands

- > 0.9 mm thick Grade 304 stainless steel wrapped onto 9.0 mm thick MRMDF core (Moisture Resistant MDF), brushed stainless steel finish, brushed effect runs horizontally. All four edges are folded and unwelded

Splashbacks

- > Thin splashbacks - 0.9 mm thick Grade 304 stainless steel, brushed stainless steel finish, brushed effect runs vertically
- > Splashbacks - 0.9 mm thick Grade 304 stainless steel wrapped onto 6.0 or 9.0 mm thick MRMDF core (Moisture Resistant MDF), brushed stainless steel finish, brushed effect runs vertically. All edges are folded and unwelded

Storage

- > We recommend that the plastic coating protecting the stainless steel must be left intact until installation is completed

Fitting

- > Stainless steel worktops should only be fitted in areas that experience normal cooking ranges of temperature and humidity. Particular care should be taken in newly built areas to ensure a stable atmosphere. All windows/doors should be in place, plasterwork fully dried and major works completed prior to installation
- > Use adhesive to mount upstands and splashbacks to wall - order separately: Assembly adhesive, 310 ml tube, Cat. No. 003.50.100

Cleaning and care

- > Chlorides such as bleach or common salt and acids of any kind can damage all grades of stainless steel surfaces. If a spillage occurs rinse immediately and thoroughly with plenty of fresh water and then dry with a soft cloth
- > Metal objects that may rust should never be left in contact with stainless steel
- > To maintain the best appearance of your stainless steel worktops, only use warm water and a mild detergent ensuring that the surface is rinsed thoroughly and then dried with a soft cloth



> Installation and modification advice

- Leave on the protective film
- Add masking tape to the area to be cut
- Draw out the cutting line
- Drill a hole to fit a jigsaw blade to cut round
- A drop of oil may be needed on the blade

- > Care should be taken when handling and installing these products. For your safety, we recommend that hands are protected from unfinished edges and corners



For help, advice and ordering of bespoke sizes of copper worktops, splashbacks and upstands please get in touch with our Technical Sales Team, 0800 171 2908 or technicalsupport@hafele.co.uk



10 Year Warranty

Item	Stainless steel
Worktop 1000 x 600 x 37 mm	564.12.001
Worktop 1200 x 600 x 37 mm	564.12.002
Worktop 1400 x 600 x 37 mm	564.12.003
Worktop 1600 x 600 x 37 mm	564.12.004
Worktop 1800 x 600 x 37 mm	564.12.005
Splashback 600 x 750(H) x 10 mm	564.86.100
Splashback 900 x 750(H) x 10 mm	564.86.101

LIGHTING



2021 BM KITCHEN PRODUCTS & APPLIANCES BROCHURE, © Häfele U.K. Ltd 2021. Dimensional data not binding. We reserve the right to alter specifications without notice.

WHY USE LOOX ENGINEERED BY HÄFELE?

The answer is simple; our combination of products and services makes us unique in the market. Our quality furniture lighting, FREE Lighting Design Service, which removes the time spent specifying and pricing, together with Häfele to Order, our bespoke made-to-order service, delivers a true plug and play experience.

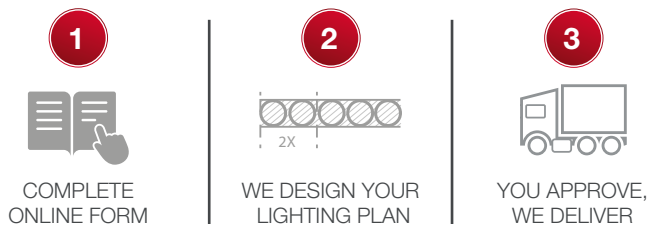
Lighting Design Service

Tap into your FREE lighting specification resource with our Lighting Design Service. Our experts will create a bespoke lighting plan, product list and priced quote based on your design; all free of charge.

Just follow our 3 easy steps to take advantage of this free of charge service. Complete the online enquiry form, sending it to us with your floor layout. We design your lighting plan; you approve and we deliver. Don't forget to ask about Häfele to Order services, including cutting, assembling, testing and packing.

For more information visit:

hafele.co.uk/lightingdesignservice



Häfele to Order Service

Häfele to Order will provide your lighting requirements all cut, assembled, tested, packed and shipped to you. There is no minimum requirement. If you only need a single length to be cut, or a small number of products to be packed, we are happy to offer this service for a small additional charge.



Start your lighting enquiry:

Click on the icon to visit hafele.co.uk/lightingdesignservice for your no obligation free design, list of materials and price.

A DIALOGUE ABOUT AMBIANCE.

LED light in furniture and furnishings, an extension of room light.

Light is a fundamental part of life, one that noticeably affects our well-being. The bright, cool white morning light is very different from the warm glow of candles or light bulbs.

Light in furniture and furnishings blend harmoniously with the lighting of the room adding another layer to the design - a fourth dimension. By using light in this way, ambiance can be created in a room and areas can be separated or accentuated.

LED lights are ideally suited for this purpose because of their low heat, small fixtures and long service life.



A SYSTEM THAT SIMPLIFIES DESIGNING.

Loox. Light ideas that are flexible, easy and reliable.

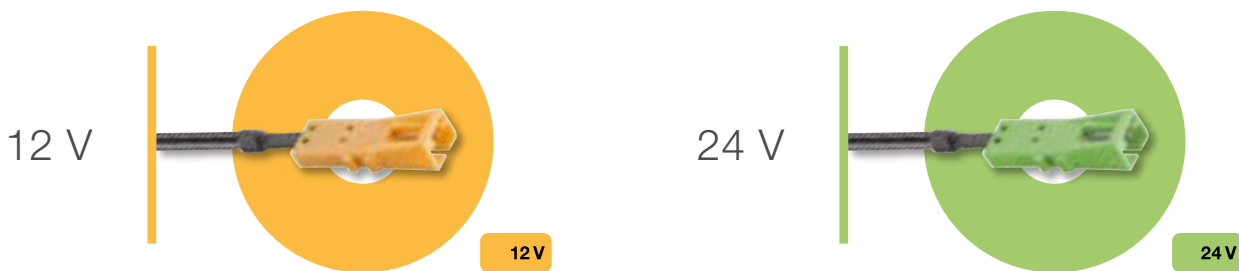
It is easy to develop and plan flexible lighting for your environment using the comprehensive Loox lighting product range. From light fixtures to switches, we have a wide range of options so you can create a solution that is truly bespoke to your needs.

The easy-to-use, colour-coded, plug and play system makes complex designs simple. All components are certified and come with the 7-year Lifetime Guarantee to provide long-term reliability.



EASY AND QUICK INSTALLATION.

Loox. The intelligent plug and play system with easily understandable colour coding.



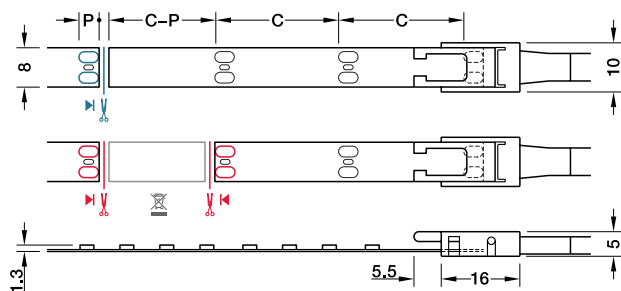
LOOX 12V LED 2062 FLEXIBLE STRIP LIGHT, MONOCHROME, 8 MM

This 5 m LED 2062 strip light has 300 high quality Samsung LEDs per strip and is ideal for ambient lighting. Self adhesive fixing makes these lights easy to retrofit. Corner connectors are available for 90° installation. Can be shortened every 50 mm.



Aluminium profiles are available to order separately, shown from page 25

Loox 12V LED 2062 flexible strip light, 8 mm width



— Cut LED strip light to length (one contact side remains on the remainder piece; reusable)

— Connect LED strip lights (two contact sides required)

C = section length = 50 mm
P = length of contact surface = 4.0 mm

- > Equipped with high quality Samsung LEDs
- > For surface mounting, self adhesive, 5 m length
- > Can be shortened every 50 mm
- > Voltage: 12V. Wattage: 24W (4.8W per metre)
- > Dimmable
- > Degree of protection: IP20
- > Lifetime: 50,000 h
- > Width: 8 mm
- > Height: 1.3 mm
- > With 2.0 m lead with Loox 12V connector
- > White plastic
- > Order qty: 1 pc (roll of 5 m length)

Distance	120°			
	2700 K	3000 K	4000 K	5000 K
250 mm	1050 Lx	1090 Lx	1120 Lx	1130 Lx
500 mm	435 Lx	455 Lx	460 Lx	470 Lx
750 mm	240 Lx	245 Lx	260 Lx	260 Lx
1000 mm	145 Lx	150 Lx	155 Lx	160 Lx



- > Loox driver must be ordered separately, shown on page 27
- > Loox switches also available, shown on pages 29-31



- > Maximum strip length is dependant on driver wattage capacity, shown on page 27
- > Maximum recommended strip light length for optimum visual light output: 6.0 m

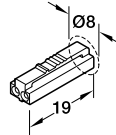
Output:	2700 K	3000 K	4000 K	5000 K
Light colour:	Warm white		Cool white	
Wattage (W):	4.8W per metre			
Energy efficiency:	A+	A+	A+	A+
Number of diodes:	60 per metre			
Light output (Lm/m):	440	465	490	495
Efficacy (Lm/W):	92	97	102	103
CRI Ra / R9:	90 / 50			

12V	0-100%	IP20	III	F	7 YEARS	Fixings included
Length	2700 K	3000 K	4000 K	5000 K		
5 m	833.70.244	833.70.245	833.70.246	833.70.247		

Loox 12V lead for connecting LED strip light monochromatic, 8 mm, to Loox driver (not Loox5)



12V version



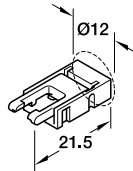
- > Current carrying capacity: Max 5 A
- > Clip width: 10 mm
- > Supplied with: 1x lead plug/clip
- > Plastic
- > Order qty: 1 pc

12 V



Voltage	2000 mm
12V	833.72.716

Loox interconnecting lead, LED strip light monochromatic, 8 mm



- > Current carrying capacity: Max 5 A
- > Clip width: 10 mm
- > Supplied with: 1x lead clip/clip
- > Plastic
- > Order qty: 1 pc



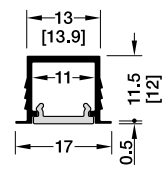
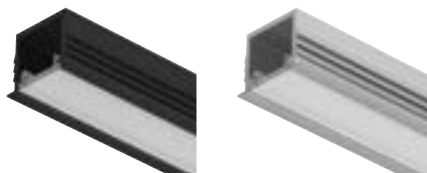
Length	Cat. No.
50 mm	833.89.191
500 mm	833.89.192
2000 mm	833.89.193

LOOX ALUMINIUM PROFILES FOR RECESS MOUNTING

Loox profiles 1104 include a white opal diffuser which creates a uniform light. The LED points are invisible from 120 LEDs/m. Order alternative diffusers in black opal or transparent separately.



Loox 1103 aluminium profile, 11.5 mm depth, for Loox LED flexible strip lights, recess mounting



Routing dimensions



End caps



- > Order profile and end caps separately
- > For recess mounting
- > With white opal plastic diffuser
- > Diffuser width: 11 mm
- > End caps with cable outlet
- > Anodised aluminium profile
- > Order qty:
- > Profile: 1 pc
- > End caps: 1 set - includes 10 pcs (5 pairs)



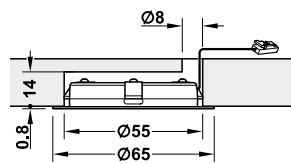
Colour	Black	Silver coloured
Length 3000 mm	833.95.723	833.95.722
Please order end caps separately:		
End caps (1 set = 10 pcs)	833.95.767	833.95.766

LOOX 12V LED 2047 DOWNLIGHT

The powerful LED 2047 with frosted real glass cover makes a wide range of applications possible in furniture. The housing components are exclusively made from steel, providing good service as ambient lighting for years. The different mounting variants and optional housing provide a great deal of flexibility during installation.



Loox 12V LED 2047 downlight, Ø 65 mm



Distance	120°	3000 K	4000 K	5000 K
250 mm		560 Lx	570 Lx	670 Lx
500 mm		210 Lx	215 Lx	245 Lx
750 mm		115 Lx	115 Lx	135 Lx
1000 mm		75 Lx	75 Lx	90 Lx

- > 0.8 mm rim, min. 14 mm hole depth required
- > For recess mounting, press-fit in Ø 55 mm hole, order bezel separately
- > For surface mounting, order bezel separately
- > Voltage: 12V. Wattage: 3.0W
- > Dimmable
- > Degree of protection: IP20
- > With 2 m lead with Loox 12V connector
- > Steel housing
- > Order qty: 1 pc

Output:	3000 K	4000 K	5000 K
Light colour:	Warm white	Cool white	Cool white
Energy efficiency:	A+	A+	A+
Number of diodes:	24	24	24
Light output (Lm):	210	216	240
Wattage (W):	3	3	3
Efficacy (Lm/W):	70	72	80
Colour Rendering Index:	90	90	83



Order bezel separately for surface mounting

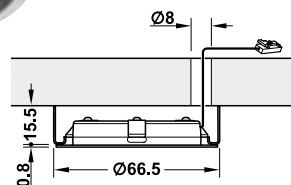


- > Loox driver must be ordered separately, shown on page **26**
- > Loox switches also available, shown on pages **29-31**

12V

Finish	3000 K	4000 K	5000 K
Polished chrome-plated	833.72.300	833.72.301	833.72.302
Silver coloured	833.72.340	833.72.341	833.72.342
Stainless steel coloured	833.72.390	833.72.391	833.72.392

Loox 12V LED 2047 bezel, Ø 66.5 mm



- > For surface mounting Loox LED 2047 downlight
- > Screw fixing
- > Steel
- > Order qty: 1 pc



Finish	Cat. No.
Polished chrome	833.72.802
Silver coloured	833.72.803
Stainless steel coloured	833.72.804

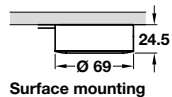
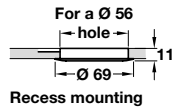
LOOX COMPATIBLE 12V LED LIGHTS

Round downlights with lighting technology that means there are no visible LED dots. Fully compatible with the Loox 12V system of drivers and switches.

Loox Compatible 12V LED recess mounted downlight, 2.4W



Bezel included - discard bezel for recess mounting



Distance	3000 K	6500 K
250 mm	820 Lx	900 Lx
500 mm	208 Lx	220 Lx
750 mm	92 Lx	95 Lx
1000 mm	50 Lx	55 Lx

- > For recess mounting press-fit in $\varnothing 56$ mm hole, bezel must be discarded
- > For surface mounting screw fix bezel (included) must be used
- > Voltage: 12V. Wattage: 2.4W
- > Degree of protection: IP20
- > With 5 m lead with Loox 12V connector
- > Steel
- > Order qty: 1 pc or set



Output:	3000 K	6500 K
Light colour:	Warm white	Daylight white
Wattage (W):	2.4	2.4
Energy efficiency:	A+	A+
Number of diodes:	12	12
Light output (Lm):	155	168
Efficacy (Lm/W):	65	70
Colour Rendering Index:	80	80

12V 0-100% IP20

Finish	3000 K	6500 K
Brushed nickel	833.01.670	833.01.671
Set includes lights, 1x driver and mains lead		
Packed set with 3 lights included	833.01.672	833.01.673

- > Loox driver must be ordered separately, shown below
- > Loox switches also available, shown on pages 29-31

Loox 12V LED driver, constant voltage



- > For use with Loox or Loox compatible 12V lights only
- > Input voltage: 100-240V; 50-60Hz
- > Output voltage: DC 12V
- > Max. recommended lead length from driver to switch: 6000 mm (leads not included)
- > With integrated controller
- > 6 sockets for 12V lights
 - 1 socket for switch (switches shown on pages 29-31)
 - 1 socket for mains lead
- > Plastic
- > Order qty: 1 pc

- > For use with Loox or Loox compatible 12V lights
- > Maximum output 30W per port subject to driver capacity
- > Provide for sufficient air supply and circulation at the mounting location of the driver; we recommend 10 mm clearance

Loox mains leads must be ordered separately, shown below

12V IP20

Length x width x height	Wattage	Black
With socket for switch		
190 x 60 x 16 mm	0 - 40W	833.74.962

Loox mains leads



- > Voltage: 250V
- > Length: 2000 mm
- > Black plastic
- > Order qty: 1 pc

Type	Voltage	2000 mm
Moulded plug	250V	833.89.000

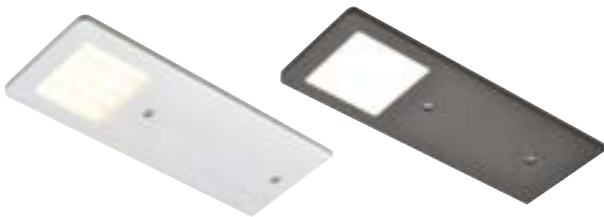


LOOX COMPATIBLE 24V LED POLAR FLAT LIGHT

The Polar light is mounted in a super thin aluminium profile which means you have all the aesthetic appearance of a recessed light but without the work; simple to install by surface mounting and screw fixing.



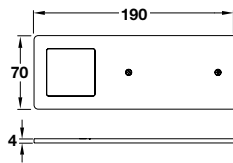
Loox Compatible 24V LED Polar flat downlight, 70 x 190 mm



- > 4 mm flat profile, for surface mounting
- > Screw fixing
- > Voltage: 24V. Wattage: 5W
- > Dimmable
- > Degree of protection: IP20
- > With 2.0 m lead with Loox 24V connector
- > Aluminium
- > Order qty: 1 pc



Max. 4x lights can be used with Loox 24V LED driver shown below



- > Loox driver must be ordered separately, shown below
- > Loox switches also available, shown on pages 29-31

24 V					
Finish	3100 K	4000 K			
Silver anodised	833.04.130	833.04.131			
Black	833.04.210	833.04.211			

Loox 24V LED driver, constant voltage



- > For use with Loox or Loox compatible 24V lights only
- > Input voltage: 100-240V; 50-60Hz
- > Output voltage: DC 24V
- > Max. recommended lead length from driver to switch: 6000 mm (leads not included)
- > With integrated controller
- > 6 sockets for 24V lights, 1 socket for switch, 1 socket for mains lead
- > Plastic
- > Order qty: 1 pc



Loox mains leads must be ordered separately, shown below



- > For use with Loox or Loox compatible 24V lights only
- > Provide for sufficient air supply and circulation at the mounting location of the driver

24 V				
Length x width x height	Wattage	Black		
With socket for switch				
140 x 50 x 16 mm	0 - 20W	833.77.945		

Loox mains leads



- > Length: 2000 mm
- > Black plastic
- > Order qty: 1 pc



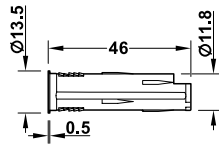
Type	Voltage	2000 mm
Moulded plug	250V	833.89.000

2021 BM KITCHEN PRODUCTS & APPLIANCES BROCHURE, © Häfele U.K. Ltd 2021. Dimensional data not binding. We reserve the right to alter specifications without notice.

LOOX MODULAR SWITCHES, FOR SNAP-IN CONNECTION

Choose from the wide range of Loox switches shown here and on the following pages. These Ø 12 mm switches can be recessed or surface mounted with the housings shown on page 26.

Loox sensor switch, modular - touch-free soft on/off switching



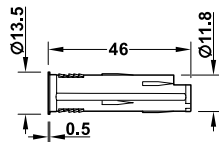
- > Drill hole Ø 12 mm
- > Sensor range: 0-80 mm. Power consumption ≤0.3 W
- > Plastic
- > Order qty: 1 pc



On/off state is stored without the need for power supply (memory function)

Finish	Cat. No.
Silver coloured	833.89.127

Loox door sensor switch, modular - soft on/off switching

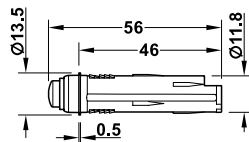


- > Drill hole Ø 12 mm
- > Sensor range: 0-100 mm. Power consumption ≤0.3 W
- > Plastic
- > Order qty: 1 pc



Finish	Cat. No.
Silver coloured	833.89.128

Loox motion detector switch, modular - automatic on/off switching



- > Drill hole Ø 12 mm
- > Sensor range: 0-3000 mm. Power consumption ≤0.1 W
- > Sensor angle: 120°
- > Delay time: approx. 30 seconds
- > Plastic
- > Order qty: 1 pc



Finish	Cat. No.
Silver coloured	833.89.129

Loox dimmer switch, modular - soft on/off switching



- > Drill hole Ø 12 mm
- > Power consumption ≤0.3 W
- > Sensor range (touchless only): 0-60 mm
- > Plastic
- > Order qty: 1 pc



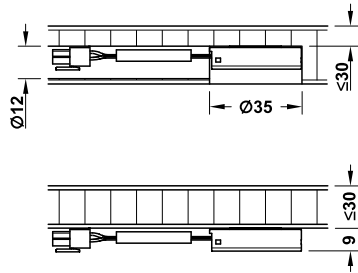
Dimming value is stored without the need for power supply (memory function)

Finish	With contact	Touchless
Silver coloured	833.89.058	833.89.126



Please order lead with snap-in connector for modular switch to Loox driver separately, shown on page 27

Loox capacitive switch/dimmer, modular



- > This completely invisible solution opens up completely new possibilities in continuously adjustable light control
- > Works by touch
- > Power consumption ≤ 1 W
- > For screw fixing or recess mounting, drill hole $\varnothing 35$ mm
- > Concealed installation in wood, glass or stone (not in metalliferous materials), at maximum depth of 30 mm
- > Plastic
- > Order qty: 1 pc



A distance of min. 500 mm to electromagnetic fields (power lines, microwave) must be adhered to

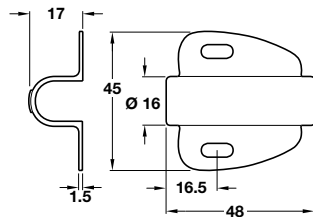


Order Loox switch to driver lead with snap-in connector separately, shown on page 31



Finish	Cat. No.
Silver coloured	833.89.133

Loox housing for switch, surface mounting

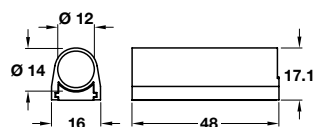


- > Only for use with $\varnothing 12$ mm Loox switches shown on page 29
- > Suitable for 32 mm series-drilled holes
- > Plastic
- > Order qty: 1 pc



Finish	Cat. No.
Silver coloured	833.89.090

Loox housing for switch, surface mounting



- > Only for use with $\varnothing 12$ mm Loox switches shown on page 27
- > Suitable for 32 mm series-drilled holes
- > Plastic
- > Order qty: 1 pc

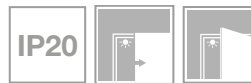
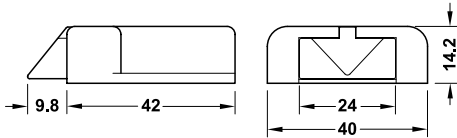


Finish	Cat. No.
Silver coloured	833.89.092

Loox universal door contact switch, modular



- > Suitable for hinged or single leaf sliding doors
- > For screw fixing
- > Plastic
- > Order qty: 1 pc



Order Loox switch to driver lead with snap-in connector separately, shown below

Finish	Cat. No.
Black	833.89.143

Loox switch to driver lead with snap-in connector, for modular switches



- > Required for modular switches
- > Drill hole for plug: Ø 12 mm
- > Black plastic
- > Order qty: 1 pc



For use with modular switches shown above and on pages **29-31**

Length	500 mm	1000 mm	2000 mm
Cat. No.	833.89.140	833.89.141	833.89.142

Loox extension lead for switches



- > For use with Loox switches
- > Black plastic
- > Order qty: 1 pc



- > Can also be used for the multi switch box and the multi driver box
- > Lead length from driver to switch max. 6 m
- > The drill hole Ø for the male plug and the female socket of the switch leads is 12 mm



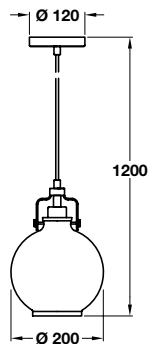
Length	2000 mm
Cat. No.	833.89.067

GLASS PENDANT CEILING LIGHTS, MAINS VOLTAGE

The Glass Pendant collection is finished in antique brass or chrome with an electroplated translucent finish over the hand blown glass shades, four different design of shade available.



PHILIP round single pendant light



- > Features a circular ceiling plate in chrome finish, with a clear cable holding the round shaped shade in clear hand blown glass
- > Vertically adjustable pendant
- > Bulb type: 1x E27 6W LED screw type bulb required, not included
- > Metal ceiling plate and glass shade
- > Order qty: 1 pc

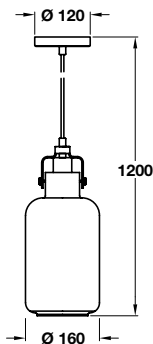
IP20

Direct Delivered

Fixings included

Finish	Cat. No.
Chrome with clear glass shade	833.42.141

WILLIAM dome single pendant light



- > Features a circular ceiling plate in antique brass or satin nickel finish, with a black or clear cable holding the dome shaped shade in clear or champagne hand blown glass
- > Vertically adjustable pendant
- > Bulb type: 1x E27 6W LED screw type bulb required, not included
- > Metal ceiling plate and glass shade
- > Order qty: 1 pc

IP20

Direct Delivered

Fixings included

Finish	Cat. No.
Antique brass with champagne glass shade	833.42.144
Satin nickel with clear glass shade	833.42.145

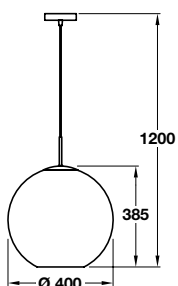
2021 BM KITCHEN PRODUCTS & APPLIANCES BROCHURE, © Hälele U.K. Ltd 2021. Dimensional data not binding. We reserve the right to alter specifications without notice.

OBERON PENDANT CEILING LIGHTS, MAINS VOLTAGE

The Oberon collection is a modern design in a copper finish.



OBERON large ceiling pendant, Ø 400 mm



- > Features a circular ceiling plate in copper finish, with a clear cable holding the dome shaped shade in copper glass
- > Bulb type: 1x E27 6W LED screw type bulb required, not included
- > Metal ceiling plate and glass shade
- > Order qty: 1 pc

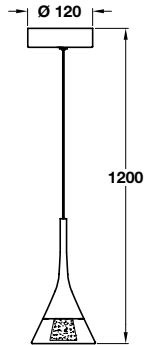


Finish	Cat. No.
Copper	833.42.095

JEWEL LED PENDANT CEILING LIGHTS, MAINS VOLTAGE

The Jewel collection is an elegant and contemporary collection, finished in polished chrome complemented by a diamond dust effect diffuser.

JEWEL 1 light LED adjustable ceiling pendant



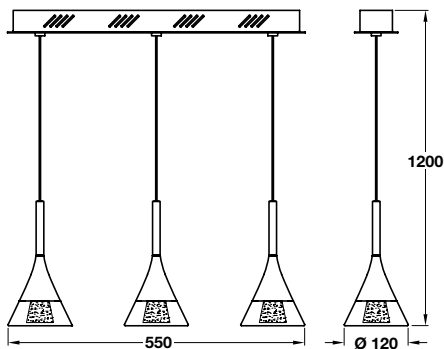
- > Features a circular ceiling plate in polished chrome finish, with a thin suspension wire holding 1 polished chrome and suspended diamond dust shade
- > Vertically adjustable pendants
- > Integrated LEDs
- > LED wattage: 1x 4.8W
- > LED colour: 3000K, warm white
- > Metal ceiling plate, suspension wire and glass shade
- > Order qty: 1 pc

IP20

Direct Delivered Fixings included

Finish	Polished chrome
Cat. No.	833.42.060

JEWEL 3 light LED adjustable ceiling bar pendant



- > Features a bar ceiling plate in polished chrome finish, with thin suspension wires holding 3 polished chrome and suspended diamond dust shades
- > Vertically adjustable pendants
- > Integrated LEDs
- > LED wattage: 3x 4.8W (14.4W)
- > LED colour: 3000K, warm white
- > Dimmable
- > Metal ceiling plate, suspension wires and glass shades
- > Order qty: 1 pc

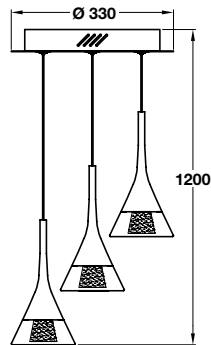
0-100% IP20

Direct Delivered Fixings included

Finish	Polished chrome
Cat. No.	833.42.061

2021 BM KITCHEN PRODUCTS & APPLIANCES BROCHURE, © Häfele U.K. Ltd 2021. Dimensional data not binding. We reserve the right to alter specifications without notice.

JEWEL 3 light LED adjustable ceiling pendant

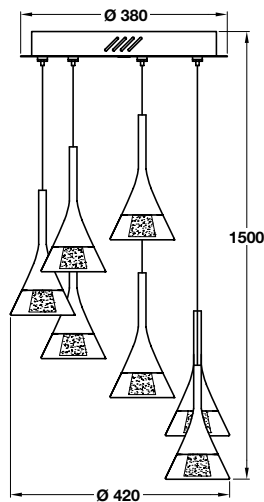


- > Features a circular ceiling plate in polished chrome finish, with thin suspension wires holding 3 polished chrome and suspended diamond dust shades
- > Vertically adjustable pendants
- > Integrated LEDs
- > LED wattage: 3x 4.8W (14.4W)
- > LED colour: 3000K, warm white
- > Dimmable
- > Metal ceiling plate, suspension wires and glass shades
- > Order qty: 1 pc



Finish	Polished chrome
Cat. No.	833.42.062

JEWEL 7 light LED adjustable ceiling pendant



- > Features a circular ceiling plate in polished chrome finish, with thin suspension wires holding 7 polished chrome and suspended diamond dust shades
- > Vertically adjustable pendants
- > Integrated LEDs
- > LED wattage: 7x 4.8W (33.6W)
- > LED colour: 3000K, warm white
- > Dimmable
- > Metal ceiling plate, suspension wires and glass shades
- > Order qty: 1 pc



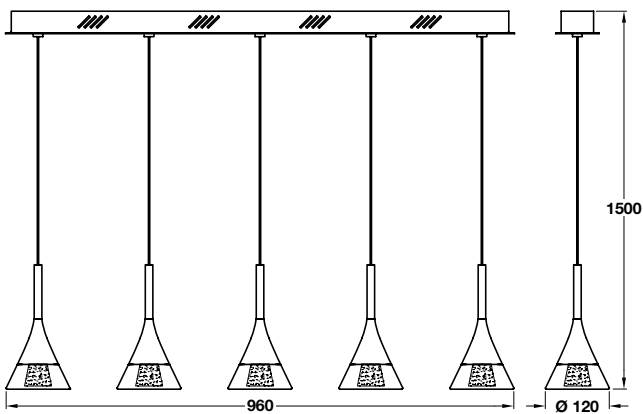
Finish	Polished chrome
Cat. No.	833.42.064



JEWEL 5 light LED adjustable ceiling bar pendant



- > Features a bar ceiling plate in polished chrome finish, with thin suspension wires holding 5 polished chrome and suspended diamond dust shades
- > Vertically adjustable pendants
- > Integrated LEDs
- > LED wattage: 5x 4.8W (24W)
- > LED colour: 3000K, warm white
- > Dimmable
- > Metal ceiling plate, suspension wires and glass shades
- > Order qty: 1 pc



Finish	Polished chrome
Cat. No.	833.42.063



WHEN YOU DEMAND
QUALITY THAT LASTS,
DEMAND HÄFELE.

Lifetime Guarantee

When it comes to products, we know that you expect quality, design and function that lasts. The Häfele Lifetime Guarantee across our own brand products ensures they have met stringent quality standards and been tested rigorously to industry certification.

*T's & C's apply. Visit hafele.co.uk/guarantee for more details.

Order online hafele.co.uk
By phone **0800 181 4290**

TECHNOLOGY

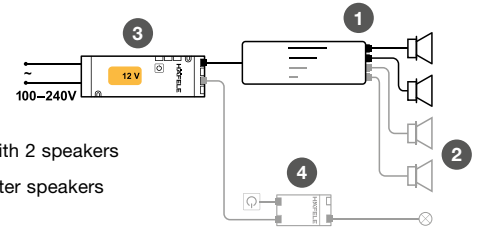


2021 BM KITCHEN PRODUCTS & APPLIANCES BROCHURE, © Häfele U.K. Ltd 2021. Dimensional data not binding. We reserve the right to alter specifications without notice.



LOOX 12V BLUETOOTH SOUND SYSTEM 420 E

The 420 E sound system includes 2 exciter speakers to build into furniture, tables, counters, mirrors, wall and ceiling surfaces, an additional 2 speakers can also be added to the system for a complete stereo surround sound. Part of the Loox 12V system - order Loox 12V driver separately.



Order separately:

- 1 Sound system with 2 speakers
- 2 Additional 2 exciter speakers
- 3 Loox 12V driver
- 4 3-way distributor with switching function

Loox 12V Bluetooth sound system 420 E with 2 speakers



Bluetooth receiver



2 exciter speakers included

- > Set includes:
 - 1x Bluetooth receiver with 2 m lead and 4 connections for speakers
 - 2x Exciter speakers with 1 m speaker lead
- > Receiver (L x W x H): 140 x 45 x 15 mm, for screw fixing
- > Speaker: Ø 65 x 22 mm, for screw fixing or for glue fixing
- > Reception range max. 10W
- > Power consumption:
 - Operation with 2 speakers (included): max. 19W
 - Operation with 4 speakers (order additional 2 speakers): max. 32W
 - Standby <0.3W
- > Music wattage:
 - Operation with 2 or 4 speakers: 2 x 10W (RMS)
- > Black plastic
- > Order qty: 1 pc



Order Loox 12V driver separately



- > For installation in furniture, tables, counters, mirrors, walls and ceiling surfaces
- > Can be installed on glass and mirror glass (3-6 mm), acrylic glass (3 mm), chipboard (10-20 mm) and mineral composite boards

12V



Finish	Cat. No.
Black	822.65.034

Exciter speaker for Loox 12V Bluetooth sound system 420 E



- > Order up to 2 additional speakers per receiver (max. 4 speakers per receiver)
- > Output: Rated/music load capacity 4/15W
- > Comprises: 1x Exciter speaker with 1 m speaker lead
- > Dimensions: Ø 65 x 22 mm
- > Installation: For screw or glue fixing
- > Order qty: 1 pc



	Cat. No.
Exciter speaker	822.65.039



Loox driver and mains lead must be ordered separately, shown on page 40

LOOX 12V COMPATIBLE SOUND SYSTEM 105

Exclusive Häfele sound system 105 with excellent sound quality for concealed furniture. Consists of a Bluetooth® receiver with an integrated exciter speaker (sound transducer). Both are installed within a compact housing that causes different surfaces to vibrate, transforming every piece of furniture into a sound carrier (speaker).




Loox Compatible 12V sound system 105



- > Dimensions (W x D x H): 66 x 25 x 140 mm
- > No separate speaker is required. Installation is quick and easy
- > Amplifier output: Mono, 5W
- > Operating voltage: 12V (Loox system)
- > For screw fixing installation
- > Because it is compatible with the plug-and-play Loox system (driver etc), it's possible to benefit from exciting combination options and synergies for your individual furniture solution
- > Order qty: 1 pc



12V


 Order Loox 12V driver separately, shown below

Finish	Cat. No.
Black	822.65.000

Loox 12V LED driver, constant voltage




- > For use with Loox or Loox compatible 12V lights only
- > Input voltage: 100-240V; 50-60Hz
- > Output voltage: DC 12V
- > Max. recommended lead length from driver to switch: 6000 mm (leads not included)
- > With integrated controller
- > 6 sockets for 12V lights
 - 1 socket for switch (switches shown on page 30)
 - 1 socket for mains lead
- > Plastic
- > Order qty: 1 pc

 > For use with Loox or Loox compatible 12V lights

> Maximum output 30W per port subject to driver capacity

> Provide for sufficient air supply and circulation at the mounting location of the driver; we recommend 10 mm clearance

 Loox mains leads must be ordered separately, shown below

12V  IP20  



Length x width x height	Wattage	Black
With socket for switch		
190 x 60 x 16 mm	0 - 40W	833.74.962

Loox mains leads



- > Voltage: 250V
- > Length: 2000 mm
- > Black plastic
- > Order qty: 1 pc



Type	Voltage	2000 mm
Moulded plug	250V	833.89.000

2021 BM KITCHEN PRODUCTS & APPLIANCES BROCHURE, © Häfele U.K. Ltd 2021. Dimensional data not binding. We reserve the right to alter specifications without notice.

VERTICAL POWERDOCKS

Comfortable and simple to use with a specifically designed handle to give access to sockets and then neatly slots away to be hidden from view.

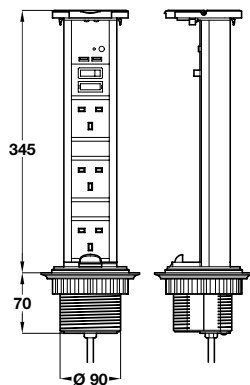


Vertical powerdock with USB connectors



Stainless steel

- > IP54 rated when closed
- > With neon master switch
- > 3x UK 13 amp sockets
- > 2x USB connectors
- > Max. 2400mA output
- > Recommended for use in kitchens, home studies and bedrooms
- > Requires a Ø 92 mm drilled hole
- > Supplied with a 2.5 m mains cable with a 13A moulded plug
- > Order qty: 1 pc



Powerdock	Top	Cat. No.
Black/aluminium	Stainless steel	822.71.022

KITCHEN STORAGE



Vauth-Sagel VS SUB Basket, for hinged cabinet doors, lava grey Planero metal baskets - see page 45 for full details

2021 BM KITCHEN PRODUCTS & APPLIANCES BROCHURE, © Häfele U.K. Ltd 2021. Dimensional data not binding. We reserve the right to alter specifications without notice.

VAUTH-SAGEL VS SUB SLIM PULL OUT STORAGE UNITS

The VS SUB Slim units make sure that every inch of space is fully utilised in a kitchen design. Fitting in a 150 mm cabinet width they make the best use of any remaining space between standard cabinets, with full extension allowing access to all contents.



10 YEAR WARRANTY - Delivering German engineering excellence

Covering their full range, the warranty gives you and your customers complete peace of mind when purchasing Vauth-Sagel products.

You can find further information on our website hafele.co.uk/vauth-sagel

- > For 150 mm cabinet width
- > Optimal use of space
- > Complete overview at one pull
- > Optimal access
- > Time saving
- > EasyFit: tool-free assembly on the runners
- > 3D front adjustment allows simple, convenient front adjustment
- > Integrated soft closing and self closing on both runners
- > Cabinet is not included

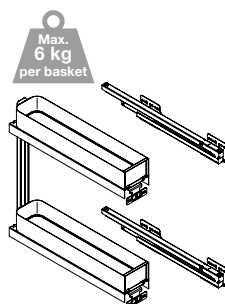


VS SUB Slim 90° storage baskets pull out unit, Lava grey Planero version

VS SUB Slim 90° Storage baskets pull out unit



Lava grey wire with solid base version



Max. 6 kg per basket

- > Min. installed height: 530 mm
- > Min. built-in depth: 495 mm
- > Baskets available in 2 designs; heavier gauge steel with solid base or Planero metal
- > Set includes:
 - 2x Storage baskets
 - 1x Pair roller bearing runners, galvanized steel, full extension, self closing including 2 dampers
 - 2x Door hanging plates, zinc-plated steel
- > Fixings are not included
- > Order qty: 1 set

VAUTH-SAGEL 10 YEAR WARRANTY	Soft Closing	Side Mounting	Right handed	150	FIXINGS REQUIRED
---	--------------	---------------	--------------	-----	------------------

For cabinet width / basket width	150 mm / 100 mm
Lava grey Planero	548.08.320
Lava grey painted wire with solid base	545.12.572

VAUTH-SAGEL VS SUB SIDE PULL OUT STORAGE

The VS SUB SIDE pull-out is the proven solution for base cabinets. This popular classic has additional front stabilization and an adjustment device for wide fronts and all angles. Frame has new improved 'airmotion' technology for smooth operation.



VS SUB Side pull out storage unit frame with Premea lava grey storage basket set for 300 mm cabinet - order frame and baskets separately

- > VS SUB Side pull out storage offers flexibility
- > For 300 mm cabinet width
- > Planero metal or premea solid based baskets
- > Frame and baskets are ordered separately
- > Cabinet is not included

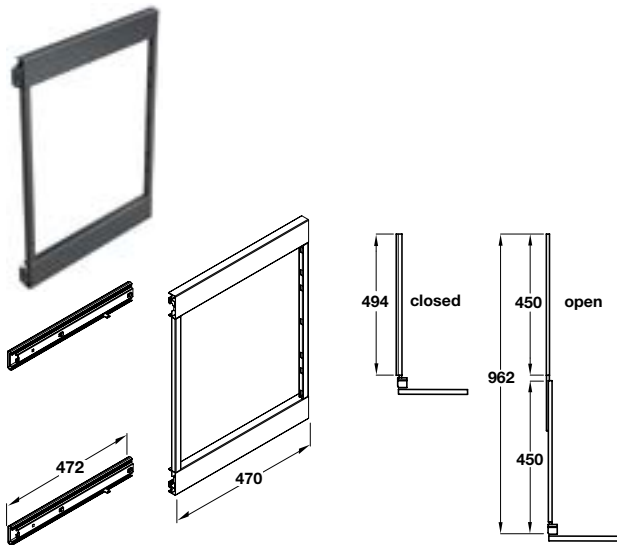


Planero lava grey



Premea lava grey

VS SUB Side pull out storage unit frame



- > For use with baskets shown
- > Integrated soft close dampener
- > Min. installed height: 580 mm
- > Built-in depth: See baskets, for cabinet widths 300 mm
- > Steel
- > Order qty: 1 set

VAUTH-SAGEL 10 YEAR WARRANTY	Soft Closing	Side Mounting	Unhanded	Fixings included
---------------------------------------	-----------------	------------------	----------	---------------------

Finish	Cat. No.
Lava grey epoxy coated	546.34.351

VS SUB Side storage basket set



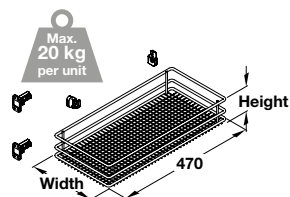
300 mm cabinet - order frame separately, shown with Planero lava grey baskets



Planero lava grey

Premea lava grey

- > Min. built-in depth: 495 mm
- > For cabinet width: 300 mm
- > Basket width: 220 mm
- > Set includes:
 - 2x Storage baskets
 - 4x Securing clips, zinc-plated steel
 - 2x Door hanging plates, zinc-plated steel
- > Note: Pull out frame 546.34.351 must be ordered separately
- > Order qty: 1 set



VAUTH-SAGEL 10 YEAR WARRANTY	Soft Closing	300	Fixings included
---------------------------------------	-----------------	-----	---------------------

Basket style	Basket height	Cat. No.
Planero lava grey metal	80 mm	546.36.382
Premea lava grey solid base and wire	84 mm	546.40.493

2021 BM KITCHEN PRODUCTS & APPLIANCES BROCHURE, © Häfele U.K. Ltd 2021. Dimensional data not binding. We reserve the right to alter specifications without notice.

VAUTH-SAGEL VS SUB BASKET

Storage basket sets for both front fixing door and hinged door cabinets.



10 YEAR WARRANTY - Delivering German engineering excellence

Covering their full range, the warranty gives you and your customers complete peace of mind when purchasing Vauth-Sagel products.

You can find further information on our website hafele.co.uk/vauth-sagel

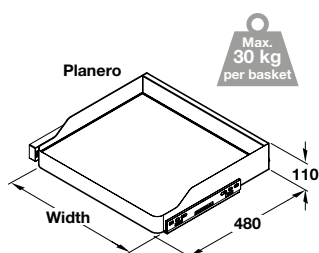


You can also build tall storage using these baskets that pull out separately - 5x sets for hinged door cabinets, lava grey Planero metal baskets



2x sets for hinged door cabinets, lava grey Planero metal baskets

Vauth-Sagel VS SUB Basket, for hinged door cabinets



- > To suit 400, 500 or 600 mm cabinet widths with 16/19 mm board thickness
- > Min. built in depth: 500 mm
- > Stated basket width includes basket, runners and spacers
- > Set includes:
 - 1x Storage basket, lava grey Planero metal
 - 1x Pair roller bearing runners, galvanized steel, full extension, self closing
- > Order qty: 1 set

VAUTH-SAGEL 10 YEAR WARRANTY	Soft Closing	Side Mounting	400	500	600	Fixings included
---	--------------	---------------	-----	-----	-----	------------------

For cabinet width	Basket width	Cat. No.
Lava grey Planero		
400 mm	313 mm	548.01.492
500 mm	413 mm	548.01.494
600 mm	513 mm	548.01.495

SWING OUT UNIT - VAUTH-SAGEL CORNERSTONE MAXX

Easy to assemble pull out shelving unit with shelves that operate independently. Once open shelves do not block adjoining cabinets.



10 YEAR WARRANTY - Delivering German engineering excellence

Covering their full range, the warranty gives you and your customers complete peace of mind when purchasing Vauth-Sagel products.

You can find further information on our website hafele.co.uk/vauth-sagel

- > EasyFit: tool-free assembly of shelf elements on the support arms
- > PAM: Power assisted movement in pull-out direction
- > Simple height adjustment, even when installed
- > The bases can be moved in and out independently and do not obstruct the adjacent cabinet
- > Floating design due to hidden fastening
- > Large area shelves
- > Each shelf has a 25 kg load capacity



Cornerstone Maxx pull out unit with shelves, Planero lava grey, right hand

Cornerstone Maxx pull out shelving unit



Right hand shown

- > Suitable for 800 or 1000 corner base cabinets
- > Built-in depth: min. 490 mm
- > Min. installation height: 650 mm
- > Total weight capacity max. 50 kg
- > Weight capacity per basket max. 25 kg
- > Single fixing point on cabinet centre post
- > Shelves pull out independently
- > Set includes:
 - 2x Shelves, lava grey metal sides and base or laminated wooden shelves with a lava grey base and lava grey rail
 - 1x Pull-out and pivoting mechanism
- > Fitting instructions
- > Order qty: 1 set

VAUTH-SAGEL
10
YEAR WARRANTY

Side Mounting

Handed

L
R

800

1000

Fixings included



Planero lava grey metal baskets



Premea lava grey solid base wire baskets

For cabinet width	For door width	Left hand	Right hand
Planero lava grey shelves			
800 mm	400 mm	542.02.491	542.02.490
1000 mm	500 mm	542.02.495	542.02.494
Premea lava grey solid base and wire shelves			
800 mm	400 mm	542.02.881	542.02.880
1000 mm	500 mm	542.02.885	542.02.884

2021 BM KITCHEN PRODUCTS & APPLIANCES BROCHURE, © Häfele U.K. Ltd 2021. Dimensional data not binding. We reserve the right to alter specifications without notice.

SWING OUT UNIT - VAUTH-SAGEL CORNERSTONE SWING

Easy to pull out shelving unit as only the support tube needs to be mounted. Soft close available as an optional extra.



10 YEAR WARRANTY - Delivering German engineering excellence

Covering their full range, the warranty gives you and your customers complete peace of mind when purchasing Vauth-Sagel products.

You can find further information on our website hafele.co.uk/vauth-sagel



Cornerstone Swing pull out unit with shelves, white base with chrome edge, unhandled

- > Easy assembly - only the support tube needs to be mounted
- > Swing movement of the shelves allows free access to adjoining cabinets
- > Simple height adjustment, even when installed
- > Optional door attachment, modular design
- > Unhandled
- > Large area shelves
- > Each shelf has an 18 kg load capacity
- > Soft close damping available as an optional extra

Cornerstone Swing pull out shelving unit



White base with chrome edge, unhandled

- > Suitable for 800 or 1000 corner base cabinets
- > Min. built-in depth: min. 490 mm
- > Min. installation height: 610 mm
- > Total weight capacity max. 36 kg
- > Weight capacity per basket max. 18 kg
- > Single fixing point on cabinet centre post
- > Shelves pull out independently
- > Set includes:
 - 2x Shelves, laminated wooden shelves with a lava grey or white base and lava grey wire or chrome edge
 - 1x Pull-out and pivoting mechanism
- > Fitting instructions
- > Order qty: 1 set

VAUTH-SAGEL 10 YEAR WARRANTY	Side Mounting	Unhandled	800	1000	Fixings included
--	------------------	-----------	-----	------	---------------------

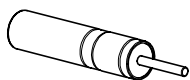


Premea lava grey solid base wire baskets

White solid base and chrome edge baskets

For cabinet width	For door width	Unhandled
Premea lava grey solid base and wire shelves		
800 mm	400 mm	542.05.870
1000 mm	500 mm	542.05.872
White solid base and chrome edge shelves		
800 mm	400 mm	542.05.290
1000 mm	500 mm	542.05.292

Soft close mechanism for Cornerstone Swing



- > Soft close damper for use with Cornerstone Swing pull out unit
- > Order qty: 1 pc

VAUTH-SAGEL 10 YEAR WARRANTY	Soft Closing
--	-----------------

	Cat. No.
Soft close mechanism	542.05.999

NUVOLA CORNER UNIT

Ideal for retrofitting. Shelves operate independently of each other. Available with white or anthracite grey shelves.



White base and polished chrome rail

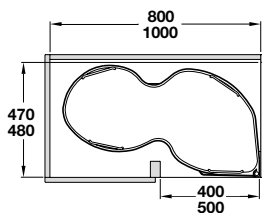


Anthracite grey base and polished chrome rail



Please note: Top pull out shelf must be installed on a wooden mid shelf

Nuvola corner pull out shelving unit



- > Installed height per shelf: 150 mm
- > Built in depth: 470 or 480 mm
- > For minimum cabinet widths 800 or 1000 mm
- > Unhanded
- > 1 guide fixes to carcasses shelf, 1 guide to base of cabinet, pivoting mechanisms fix to carcasse sides
- > Please note: carcasse shelf must be installed in cabinet (not included)
- > Trays operate independently
- > Ideal for retro fitting
- > Every set comes complete with fixing materials and fitting instructions
- > Set includes:
 - 2x White or anthracite grey melamine wooden shelves with chrome plated wire rail
 - 2x White or anthracite grey plastic guides
 - 2x Pivoting mechanisms
- > Order qty: 1 set



	800	1000
For cabinet width	800 mm	1000 mm
For door width	400 mm	500 mm
White base and polished chrome rail		
	549.38.296	549.38.298
Anthracite grey base and polished chrome rail		
	549.38.496	549.38.498

PULL OUT CORNER UNIT - VAUTH-SAGEL VS COR FLEX

A pull out corner unit with four baskets which fully exit the cupboard allowing full access to the bottom rear basket. Unhanded and available for either 900 or 1000 mm cabinet widths.



10 YEAR WARRANTY - Delivering German engineering excellence

Covering their full range, the warranty gives you and your customers complete peace of mind when purchasing Vauth-Sagel products.

You can find further information on our website hafele.co.uk/vauth-sagel

- > Maximises space whilst allowing full accessibility to entire unit
- > 100% of storage space extends from cupboard in one move
- > Unhanded unit easily installed into the base of cabinets
- > Integral self and soft closing
- > Choice of wire baskets: Premea solid based or Planero metal baskets

VS COR Flex pull out corner unit complete set



Planero lava grey metal baskets and lava grey frame shown

- > Installed height: 530 mm
- > Built-in depth: 480 mm
- > For minimum cabinet width 900 mm or 1000 mm
- > For 900 mm: Min. inside width = 693 mm
Min. door opening = 381 mm
- > For 1000 mm: Min. inside width = 802 mm
Min. door opening = 444 mm
- > Total weight capacity max. 32 kg
- > Weight capacity per basket max. 8 kg
- > Total surface area approx. 29.6 m²
- > Clearance between rear of front baskets and cabinet door when unit is fully extended is 40 mm
- > Every set comes complete with fixing materials and fitting instructions
- > Set includes:
 - 1x Frame set:
Hanging frames and base mounting track; lava grey epoxy coated tubular steel
Front and back frames; lava grey epoxy coated tubular steel
 - 1x Basket set:
2x Storage baskets (rear)
2x Storage baskets (front)
- > Order qty: 1 set



Planero lava grey metal baskets



Premea lava grey solid base and wire baskets



For cabinet width	900 mm	1000 mm
For door width	450 mm	500 mm
Planero lava grey metal baskets	548.29.343	548.29.344
Premea lava grey solid base and wire baskets	548.29.423	548.29.424

PULL OUT LARDER UNITS - VAUTH-SAGEL TAL LARDER

Larder units with integrated soft close system ensuring quiet, smooth closing. Baskets can be individually positioned at the required height in the cabinet frame.



10 YEAR WARRANTY - Delivering German engineering excellence

Covering their full range, the warranty gives you and your customers complete peace of mind when purchasing Vauth-Sagel products.

You can find further information on our website hafele.co.uk/vauth-sagel



Premea solid grey base with lava grey wire baskets and lava grey frame

- > With improved fully synchronised runners guaranteeing a slip-free, safe, smooth extension and retraction of the larder unit
- > Runners are complete with a new high-quality hydraulic damping system which means the unit operates with a smooth close
- > Choice of wire baskets, Premea solid based or Planero metal baskets
Baskets are included with larder unit sets
Cabinet is not included



Planero lava grey metal baskets



Premea lava grey solid base and wire baskets

VS TAL LARDER pull out unit complete set, centre mounting, height adjustable, full extension



Planero lava grey metal baskets and lava grey frame shown

- > For installed heights:
1700-1950 mm, 1900-2140 mm: 5x baskets included (single baskets can be ordered in addition separately)
- > Built-in depth 470 mm
- > For cabinet widths 300 or 400 mm
- > Total weight capacity max. 80 kg
- > Weight capacity per basket max. 16 kg
- > Baskets are individually height adjustable
- > Set includes:
1x Frame set, silver or lava grey
1x Runner set
1x Basket set
- > Order qty: 1 set



For cabinet width	300 mm	400 mm
Basket width	250 mm	350 mm
Installed height		
Planero lava grey metal baskets		
1700-1950 mm	547.49.304	547.49.324
1900-2140 mm	547.49.305	547.49.325
Premea lava grey solid base wire baskets		
1700-1950 mm	547.17.014	547.17.034
1900-2140 mm	547.17.015	547.17.035

2021 BM KITCHEN PRODUCTS & APPLIANCES BROCHURE, © Häfele U.K. Ltd 2021. Dimensional data not binding. We reserve the right to alter specifications without notice.

SWING OUT LARDER UNITS - VAUTH-SAGEL TAL GATE N

The VS TAL GATE N larder unit is easy to use; the baskets are pulled out of the cabinet at the same time as the door is opened. Baskets can be individually positioned at the required height in the cabinet frame.



10 YEAR WARRANTY - Delivering German engineering excellence

Covering their full range, the warranty gives you and your customers complete peace of mind when purchasing Vauth-Sagel products.

You can find further information on our website hafele.co.uk/vauth-sagel

- > For 300 mm cabinet widths
- > With improved top runner for a smooth motion
- > Optimal access
- > Complete overview at one pull
- > Time saving
- > Customisable height adjustment
- > Maximal access from minimum opening
- > EasyFit: tool-free assembly on the lower runner
- > EasyFit: tool-free connection between the driver and support frame
- > Individually height adjustable baskets
- > Choice of wire baskets, Premea solid based or Planero metal baskets. Baskets are included with larder unit sets
- > Cabinet is not included



Also available for 500 mm cabinet widths, shown on page 52



Baskets are included with larder unit sets - Planero lava grey metal baskets and lava grey frame shown

VS TAL GATE N swing out larder unit complete set, centre mounting, height adjustable, full extension



Planero lava grey metal baskets



Premea lava grey solid base and wire baskets

- > For installed heights: 1700-1950 mm, 1900-2140 mm: 5x baskets included (single baskets can be ordered in addition separately)
- > Built-in depth min. 480 mm
- > For cabinet widths 300 mm
- > Total weight capacity max. 75 kg
- > Weight capacity per basket max. 15 kg
- > Recommended hinges (not inc.):
- > 160° hinges
- > If soft closing required, hinges with damper must be used
- > Baskets are individually height adjustable
- > Set includes:
 - 1x Frame set, lava grey
 - 1x Runner set
 - 1x Basket set
- > Order qty: 1 set



Baskets are included with larder unit sets - Premea lava grey solid base and wire baskets and lava grey frame shown



Please note: wide angle zero protrusion hinges must be used

For cabinet width	300 mm
Basket width	230 mm
Installed height	
Planero lava grey metal baskets	
1700-1950 mm	549.58.303
1900-2140 mm	549.58.304
Premea lava grey solid base and wire baskets	
1700-1950 mm	549.57.043
1900-2140 mm	549.57.044

SWING OUT LARDER UNITS - VAUTH-SAGEL TAL GATE

The VS TAL GATE larder unit is easy to use; the baskets are pulled out of the cabinet at the same time as the door is opened. Baskets can be individually positioned at the required height in the cabinet frame.



10 YEAR WARRANTY - Delivering German engineering excellence

Covering their full range, the warranty gives you and your customers complete peace of mind when purchasing Vauth-Sagel products.

You can find further information on our website hafele.co.uk/vauth-sagel



Baskets are included with larder unit sets - Planero lava grey metal baskets and lava grey frame shown

- > For 500 mm cabinet widths
- > With improved top runner for a smooth motion
- > Optimal access
- > Complete overview at one pull
- > Time saving
- > Customisable height adjustment
- > Maximal access from minimum opening
- > EasyFit: tool-free assembly on the lower runner
- > EasyFit: tool-free connection between the driver and support frame
- > Individually height adjustable baskets
- > Choice of wire baskets, Premea solid based or Planero metal baskets. Baskets are included with larder unit sets
- > Cabinet is not included



Also available for 300 mm cabinet width, shown on page 51

VS TAL GATE swing out larder unit complete set, centre mounting, height adjustable, full extension



Premea lava grey solid base and wire baskets



Planero lava grey metal baskets



Premea lava grey solid base and wire baskets

- > 1700-1950 mm, 1900-2140 mm: 5x baskets included (single baskets can be ordered in addition separately)
- > Built-in depth min. 480 mm
- > For cabinet widths 500 mm
- > Total weight capacity max. 75 kg
- > Weight capacity per basket max. 15 kg
- > Recommended hinges (not inc.):
- > 110°/120° for 500 and 600 mm larder units
- > If soft closing required, hinges with damper must be used
- > Baskets are individually height adjustable
- > Set includes:
 - 1x Frame set, silver or lava grey
 - 1x Runner set
 - 1x Basket set
- > Order qty: 1 set



For cabinet width	500 mm
Basket width	400 mm
Installed height	
Planero lava grey metal baskets	
1700-1950 mm	549.58.333
1900-2140 mm	549.58.334
Premea lava grey solid base and wire baskets	
1700-1950 mm	549.57.003
1900-2140 mm	549.57.004



Please note: wide angle zero protrusion hinges must be used

NINKA QANTO CORNER STORAGE SOLUTION

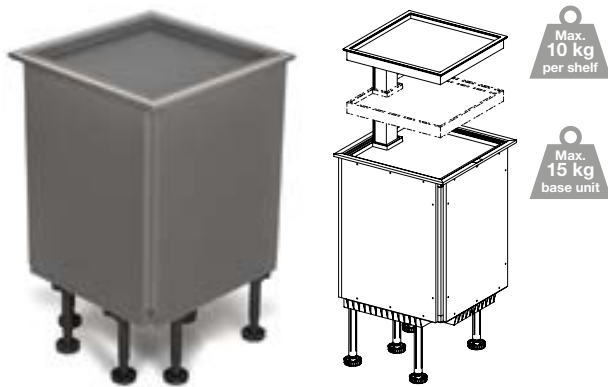
Qanto is a complete pre-assembled cabinet with two or three illuminated trays that rise at the touch of a button. Ideal for L or U shaped kitchen layouts.

Quanto offers efficient corner storage and the ergonomic benefit of bringing heavy items to worktop level using a robust lifting strut.

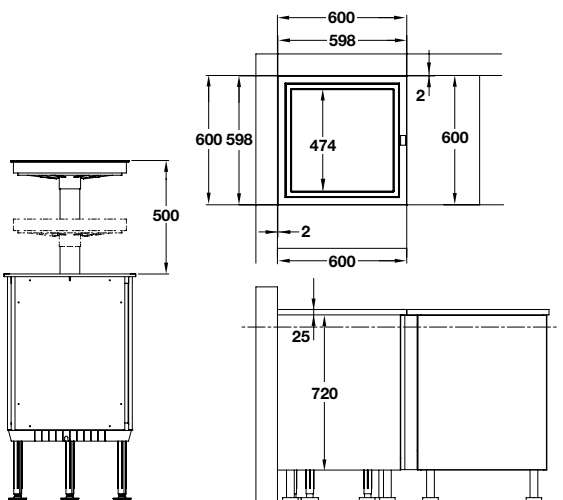


Click on the icon to watch the Ninka Qanto video on the Häfele YouTube channel

Ninka Qanto unit for corner storage, vertically rising



- > Complete pre-assembled unit
- > Two or three tray version available
- > Depth x width: 598 x 598 mm
- > Minimum installation space: 600 x 600 mm
- > Height adjustable using supplied legs for worktops between 800-1010 mm
- > Can be positioned such that the lifting strut is on the left or the right
- > A safety cut-out switch and special tray fitting preventing trapped fingers
- > Fitted with LED lighting that automatically switches on and off as the trays rise and lower
- > Height adjustable middle tray with ± 50 mm height adjustment
- > Lead with moulded 13A UK plug included
- > Dark grey
- > Order qty: 1 pc



	Cat. No
2 trays	542.72.421
3 trays	542.72.431

M-STAX LARDER UNIT WITH DRAWERS

A flexible larder unit allowing maximum capacity, M-STAX comes with pre-assembled drawers for ease of installation. The M-STAX is available in anthracite to match the latest kitchen trends.

- > Enjoy complete flexibility with M-STAX larder unit with drawers
- > All drawers are 450 mm deep
- > Available to suit 500 mm or 600 mm cabinet widths
- > Available in anthracite finish
- > 50 kg weight capacity using fully synchronised runner technology
- > Soft close
- > Can suit different larder unit heights depending on drawer combination
- > Standard and pan drawers included in each set



Anthracite finish

M-STAX larder unit with drawers sets



- > Sets consist of:
 - 1x Assembled Matrix Box P standard drawer
 - 3/4x Assembled Matrix Box P pan drawers
 - 1x Assembled internal standard drawer front
 - 3/4x Assembled internal pan drawer fronts
- > Minimum installation height:
 - Standard drawer min. 105 mm
 - Pan drawer min. 188 mm
- > Order qty: 1 set



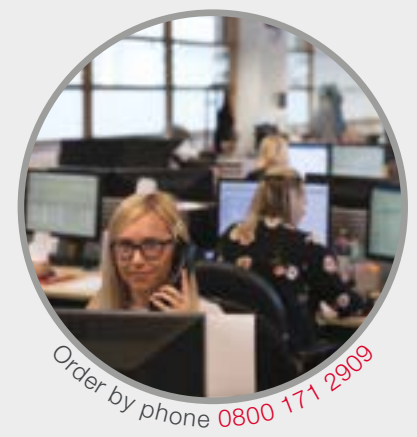
Please note: wide angle zero protrusion hinges must be used

Drawers included	Anthracite
For 500 mm cabinet width	
1x standard, 4x pan	554.28.366
For 600 mm cabinet width	
1x standard, 4x pan	554.28.368



VIEW OUR COMPLETE HÄFELE MATRIX BOX DRAWER SYSTEM RANGE *24/7*

At Häfele, we believe in thinking outside of the box. Supplying the latest innovations in high-quality drawer solutions, we help you achieve a flawless finish.



Order by phone *0800 171 2909*

VISIT [HAFELE.CO.UK](https://www.hafele.co.uk) TO VIEW THE FULL RANGE

VAUTH-SAGEL VS ENVI SPACE PRO PULL OUT WASTE BINS

A complete waste bin system with soft and self closing runners. Can also be used as a space saving food storage system.



10 YEAR WARRANTY - Delivering German engineering excellence

Covering their full range, the warranty gives you and your customers complete peace of mind when purchasing Vauth-Sagel products.

You can find further information on our website hafele.co.uk/vauth-sagel

- > System includes its own runners for side fixing to cabinets and door front
- > Automatic closure and soft closing mechanism
- > Total system capacity: 20 to 60 litres



VS ENVI Space Pro pull out waste bins



400 mm cabinet



500 mm cabinet, 2 bins

- > Suitable for 400-600 mm cabinets with 15/16 mm or 18/19 mm board thickness
- > Installed height 370 mm for cabinet width 400 mm
- > Installed height 470 mm for cabinet widths 450-600 mm
- > Installed depth: 464 mm
- > Waste bins and lid cover designed to pull out separately
- > Integral soft and self closing
- > Silver or lava grey epoxy coated steel side panels, lid, frame housing and mounting components and grey plastic bins
- > Order qty: 1 pc



500 or 600 mm cabinet, 3 bins

VAUTH-SAGEL
10
YEAR WARRANTY

Side Mounting

400

500

600

Soft Closing

Fixings included

For cabinet width	Total capacity	Bins included	Silver	Lava grey
400 mm	20 litres	2x 10 litres	503.04.503	503.04.303
500 mm	49 litres	1x 21, 1x 28 litres	503.04.515	503.04.315
500 mm	46 litres	2x 12.5, 1x 21 litres	503.04.525	503.04.325
600 mm	56 litres	2x 28 litres	503.04.517	503.04.317
600 mm	53 litres	2x 12.5, 1x 28 litres	503.04.537	503.04.337
600 mm	60 litres	1x 21, 1x 39 litres	503.04.547	503.04.347



VS ENVI Kick foot operated door opener Cat. No. 503.04.950 is available to order separately

VAUTH-SAGEL ENVI DRAWER

More space, more organisation. The Envi drawer is an add on module for installation with bin systems, making use of the space above the bins. Can be installed wherever space permits and can be stacked.



10 YEAR WARRANTY - Delivering German engineering excellence

Covering their full range, the warranty gives you and your customers complete peace of mind when purchasing Vauth-Sagel products.

You can find further information on our website hafele.co.uk/vauth-sagel

- > This innovative add on module acts as an organisation drawer and enhances the waste bin system. Expands the usable storage space with a drawer holding containers for cleaning and kitchen consumables. Depending on the position of the water connections, plastic containers can be suspended in the powder-coated metal framework
- > Usage is independent, can be installed wherever space permits and can be stacked
- > Two synchronized full pull-outs provide for an easy opening and soft-closing
- > EasyFit: tool-free installation of bin support onto the runners
- > Integrated installation template; no measuring necessary when installing into cabinet
- > Features:
- > Can be retrofitted
- > Multifunctional fitting options
- > Variable mounting of the plastic containers in the frame construction
- > Total system capacity: 3.9 litres



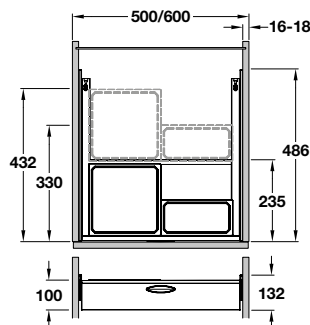
Lava grey finish VS ENVI drawer

VS ENVI drawer



Silver finish

- > Suitable for 500 or 600 mm cabinets with 15/16 mm or 18/19 mm board thickness
- > Installed height: 132 mm
- > Installed depth: 486 mm
- > Integral soft and self closing
- > Silver or lava grey epoxy coated steel side panels, frame housing and mounting components and light or lava grey plastic bins
- > Order qty: 1 pc



For cabinet width	Total capacity	Bins included	Silver	Lava grey
500 mm	3.9 litres	1x 1.2, 1x 2.7 litres	503.16.972	503.16.371
600 mm	3.9 litres	1x 1.2, 1x 2.7 litres	503.16.973	503.16.373

Waste Boss duo pull out bin, min. 400 mm



- > The bin housing incorporates its own over extension runners and is secured to the cabinet floor
- > Easy to install, base mounted
- > Metal lid
- > Bins equipped with two handles each
- > Anthracite grey finish
- > Total system capacity: 64 litres - 2x 32 litres
- > Suitable for min. 400 mm hinged door cabinets
- > For base mounting in cabinets
- > Installed height: 562 mm
- > Installed depth: 483 mm
- > Installed width: 337 mm
- > Over extension runners, load capacity 25 kg evenly distributed
- > Designed to be withdrawn from the cabinet whilst the lid remains inside
- > Order qty: 1 pc

2 Year Warranty	Base Mounting	400	Fixings included
-----------------	---------------	-----	------------------

For cabinet width	Total capacity	Bins included	Cat. No.
Min. 400 mm	64 litres	2x 32 litres	502.21.413

Tek pull out waste bins



300 mm cabinet with 2 bins, dark grey finish



300 mm cabinet with 3 bins, dark grey finish



400 mm cabinet with 3 bins, dark grey finish

- > The bin housing frame incorporates its own runners and is secured to the cabinet floor
- > Total system capacity: 30 to 40 litres
- > Suitable for 300 or 400 mm hinged door cabinets
- > Installed height x width x depth:
- > 415 x 265 x 480 mm for min. 300 mm cabinet width
- > 420 x 360 x 480 mm for min. 400 mm cabinet width
- > Designed to be withdrawn from the cabinet whilst the lid remains inside
- > Dark grey steel bin housing and mounting components, galvanized steel runners, grey plastic lid, front grip panel and bins
- > Order qty: 1 pc

Base Mounting	300	400	Fixings included
---------------	-----	-----	------------------

For cabinet width	Total capacity	Bins included	Dark grey
Min. 300 mm	30 litres	1x 10, 1x 20 litres	503.06.073
Min. 300 mm	30 litres	3x 10 litres	503.06.083
Min. 400 mm	40 litres	2x 10, 1x 20 litres	503.06.094

2021 BM KITCHEN PRODUCTS & APPLIANCES BROCHURE, © Häfele U.K. Ltd 2021. Dimensional data not binding. We reserve the right to alter specifications without notice.

SLIMLINE SWEEPOVAC PLINTH VACUUM

Slimline and powerful the Sweepovac has two functions: A convenient kick pan - simply sweep towards the unit, hit the switch with the brush and the powerful vacuum removes the dirt in seconds or to use as a regular vacuum simply plug in the extendable hose - it is then effectively a mini central vacuum. Re-usable and disposable bags included.

- > A versatile fitted vacuum perfect for kitchen or utility rooms and a complete vacuum solution for caravans, motorhomes and holiday homes
- > Features clip-in hose, with 3 attachments, extends from 1.8-5.5 m
- > Easy to fit and maintenance free
- > Reduces household work - no bending and no dustpan
- > Immediate removal of dirt, pet hairs are kept under control
- > Powerful suction, can be used to suck debris off brush head
- > New re-usable dust bag
- > Dust bags are easy to remove and easily hold twelve weeks of sweepings
- > Supplied with stainless steel finish plastic front trim plates

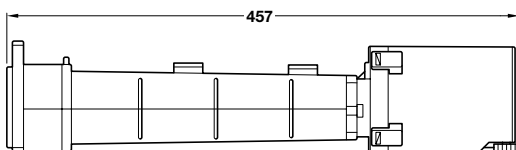
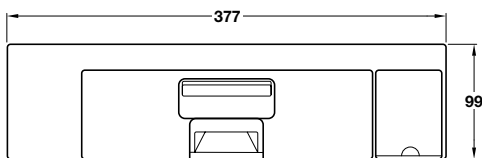


Click on the icon to watch the Sweepovac video on the Häfele YouTube channel

Slimline Sweepovac kitchen vacuum for plinths



- > For minimum plinth height 100 mm
- > 80 mm clearance from carpet required
- > Plinth cut out required: 342 x 94 mm (template provided)
- > 650 watt motor
- > Kick switch for turning on or off
- > With bag full indicator light
- > Re-usable dust bag
- > Safety cut out - switch turns off automatically after 10 seconds
- > 2 year guarantee
- > Fitting includes
 - 1x Sweepovac unit
 - 1x Mains lead, with 13A plug
 - 1x Front trim plate, stainless steel or plastic
 - 3x Disposable dust bags
 - 1x Reusable dust bag
 - 1x HEPA filter
 - 1x Clip-in hose, extends from 1.8-5.5 m
 - 3x Attachments for clip-in hose (250 mm long probe, 150 mm wide floor cleaner and 150 mm wide upholstery brush)
 - 1x Template for plinth cut out
 - 4x Ø4 x 20 mm fixing screws
 - 1x Fitting instructions
- > Order qty: 1 pc



Plinth vacuum with front trim plate	Cat. No.
Stainless steel plastic	565.29.193
Replacement dust bags and HEPA filters	
Reusable bag and filter set (1x bag, 1x filter)	565.29.993
Disposable bags and filter set (3x bags, 1x filter)	565.29.991

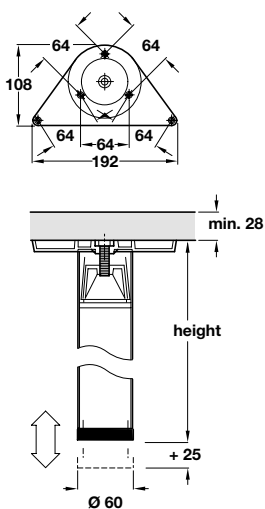
LEGS

For worktops and breakfast bars.



The legs on this page are made from tubular steel with a removable plastic foot and can be cut to size

Leg, Ø 60 mm



- > For supporting worktops or breakfast bars
- > +25 mm adjustment
- > Leg can be cut to size
- > Dark grey zinc alloy screw fixing mounting plate
- > Tubular steel leg with black plastic height adjustable foot
- > Order qty: 1 pc



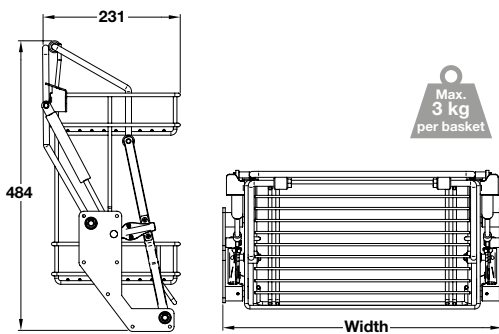
Finish	Cat. No.
870 mm height	
Polished chrome-plated	635.06.285
Stainless steel coloured	635.11.480

PULL DOWN TWO TIER WIRE SHELF

Two tier wire shelf pulls down for easy access to wall cabinet contents.



Pull down two tier wire shelf



- > For easy access to wall cabinet contents
- > Shelf drop down height/min. height required from worktop 420 mm
- > Gas spring operated
- > Chrome-plated steel
- > Order qty: 1 set

- !** > Important: Drilling pattern supplied with product must be used - failure to do so may cause fitting issues
- > Häfele recommend use of hinge Cat. No. 329.17.600 with either screw fixing mounting plate Cat. No. 329.71.503 or Euro screw fixing mounting plate Cat. No. 329.71.513 for smooth function of this product



For cabinet width	Width	Cat. No.
500 mm	464 mm	504.59.221
600 mm	564 mm	504.59.222

SLIDING DOORS



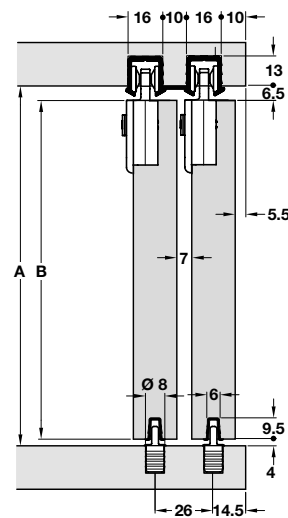
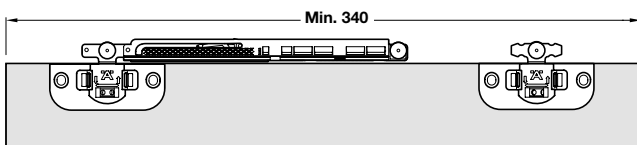
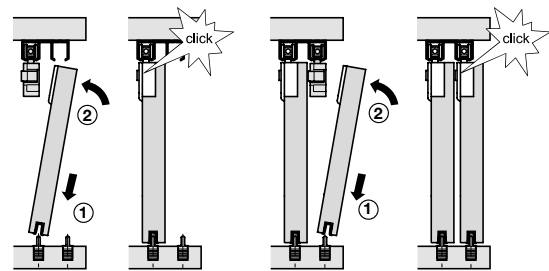
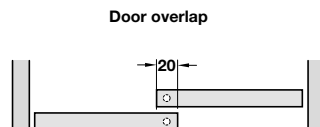
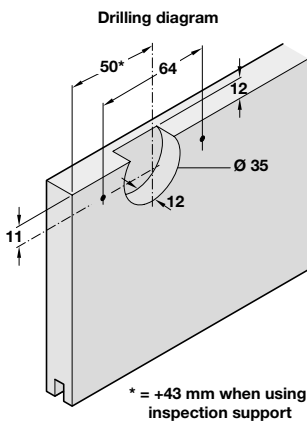
Start your sliding door gear enquiry:

Here at Häfele we want to help make our vast range of products as easy to specify as possible. So, we have made it more easy to select and order the products you need with tools on our website. Click on the icon to find out more.

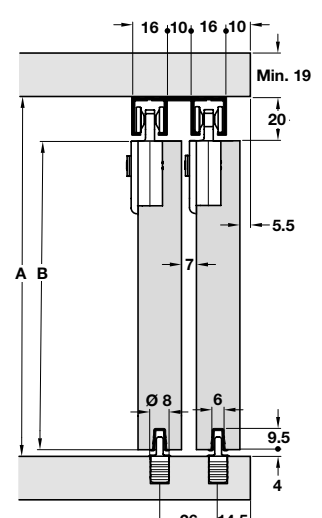
SLIDO CLASSIC 12 IF C SLIDING DOOR SYSTEM

Top quality system for small top hung cabinet doors, ideal for kitchens and cabinets for domestic or commercial applications. Fitting sets are available with or without a soft and self closing mechanism.

- > Slido Classic 12 IF C
- > Range:
 - Max. door weight 12 kg
 - Max. door height **1200 mm**
 - Max. door width **1000 mm**
 - For door thickness **16-19 mm**
- > Height adjustment ± 2 mm on running gear using adjustment wheel



With groove mounting tracks
B = A - 10.5 mm

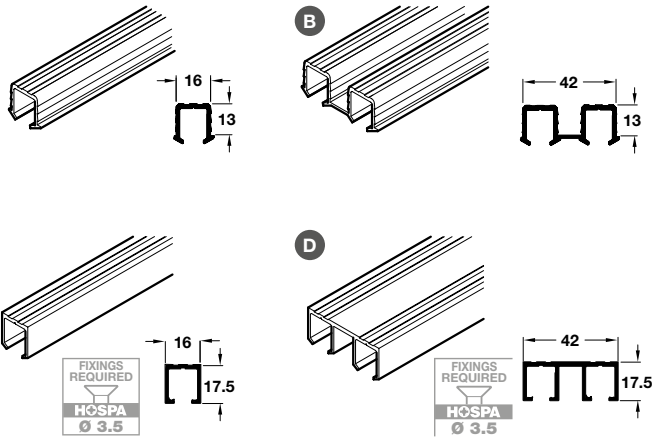


With screw fixing tracks
B = A - 24 mm



Tracks and fitting sets can be ordered separately, shown on page 64, or complete fitting sets, including tracks, shown on page 65

Slido Classic top tracks

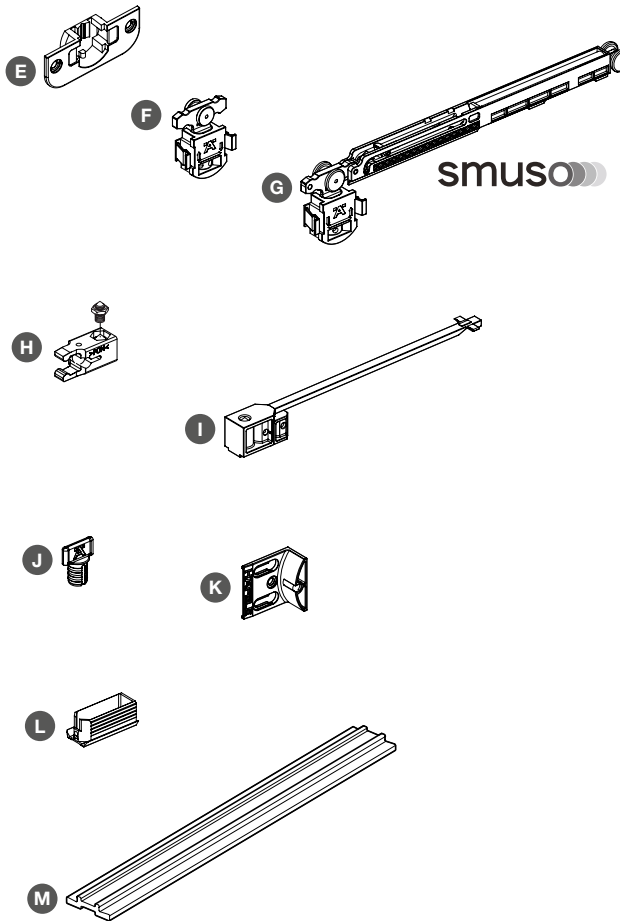


- > Order single or double tracks depending on application
- > For min 19 mm board thickness
- A Single top track, for 16 mm groove, bright aluminium
- B Double top track, for 16 mm groove, bright aluminium
- C Single top track, for screw fixing, silver coloured anodised aluminium
- D Double top track, for screw fixing, silver coloured anodised aluminium
- > Order qty: 1 pc



Length	2.5 m	3.5 m
A Single track, groove mounted	402.33.642	402.33.643
B Double track, groove mounted	402.33.652	402.33.653
C Single top track, screw fixing	402.30.642	402.30.643
D Double top track, screw fixing	402.30.652	402.30.653

Slido Classic 12 IF C fitting set, for 2 doors

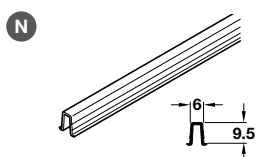


- > Fitting set includes:
- E Housing, for screw fixing, grey plastic
- F Running gear, with friction bearing, for clip fixing into housing, grey plastic
- G Running gear, with soft and self closing and friction bearing, grey plastic
- H Clip in door stopper, for top track, grey plastic
- I Door stopper, for soft and self closing mechanism, for top track, grey plastic
- J Guide, for press fitting, grey plastic
- K Stop bracket, with buffer, galvanized steel
- L Inspection support, for use as inspection cover, grey plastic
- M Mounting aid, for track installation, red plastic
- > Order qty: 1 set



Fitting set for 2 doors	without soft close	with soft close
E Housing	4 pcs	4 pcs
F Running gear	4 pcs	2 pcs
G Running gear, soft close	-	2 pcs
H Clip in door stopper	4 pcs	2 pcs
I Door stopper, for soft close	-	2 pcs
J Guide	2 pcs	2 pcs
K Stop bracket	1 pc	1 pc
L Inspection support	2 pcs	-
M Mounting aid	1 pc	1 pc
Cat. No.	402.33.013	402.33.014
Additional item		
J Guide	402.30.220	

Slido Classic bottom guide track



- > For press fitting and gluing into 6 mm groove
- > Ribbed, grey plastic
- > Order qty: 1 pc



Length	2.5 m	3.5 m
N Single bottom guide track	402.30.802	402.30.803



WHEN YOU DEMAND
QUALITY THAT LASTS,
DEMAND HÄFELE.

Lifetime Guarantee

When it comes to products, we know that you expect quality, design and function that lasts. The Häfele Lifetime Guarantee across our own brand products ensures they have met stringent quality standards and been tested rigorously to industry certification.

*T's & C's apply. Visit hafele.co.uk/guarantee for more details.

Order online hafele.co.uk
By phone **0800 181 4290**

FINETTA SPINFRONT 30/50 FOR SINGLE PIVOT DOOR

Unique system for single leaf doors that open as conventional doors then push away from view back into the cabinet.

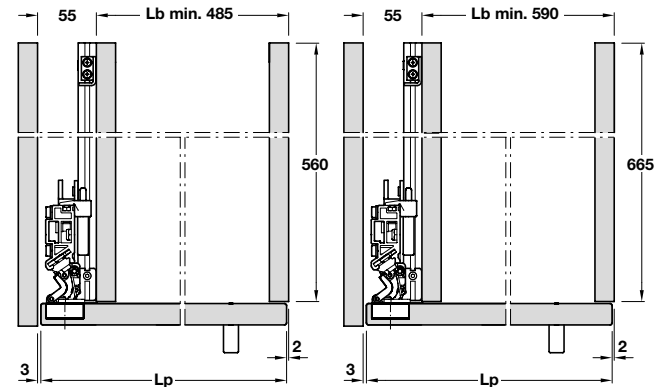


- > Finetta Spinfront 30/50
- > Range:
 - For door height: **1990 - 2200 mm/2200 - 2700 mm**
 - For cabinet depth: **560/665 mm**
 - Max. door width: **650 mm**
 - Max. door weight for 3 hinges: **30 kg**
 - Max. door weight for 5 hinges: **50 kg**
 - Door thickness: **18-30 mm**
- > For left and right hand use
- > Set for 1 door comprises of pivot assembly with backing panel, hinges and sliding mechanism
- > Running gear guided by ball bearing mounted runners

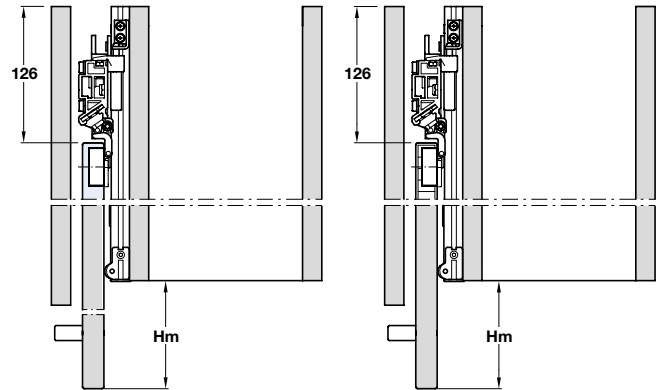
Installation dimensions

Internal installation depth 560 mm

Internal installation depth 665 mm



Top view section of closed door



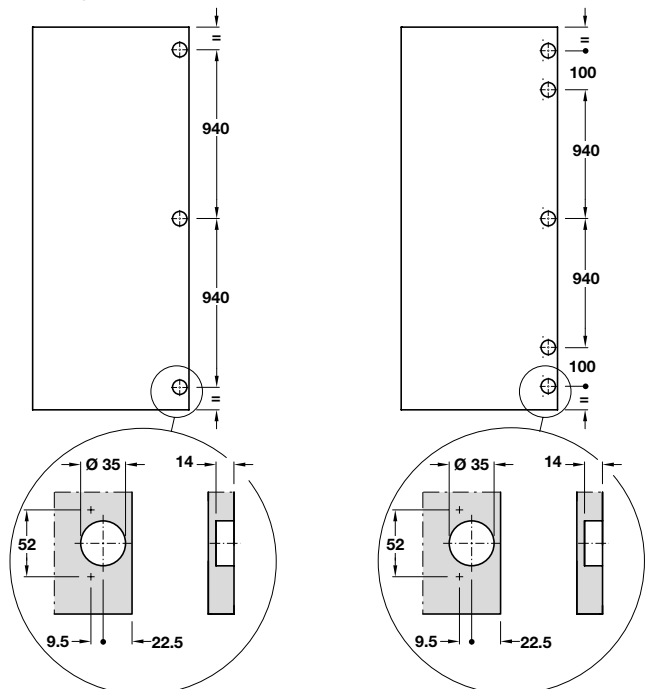
Top view section of open door

Cabinet width = L_b
 Door leaf width = $L_p = L_b + 50$
 Door overlay = $H_m = L_p - 560 (665) + 126$

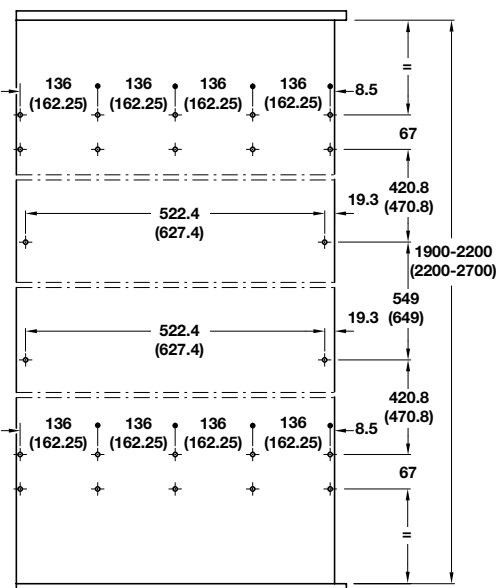
Drilling pattern

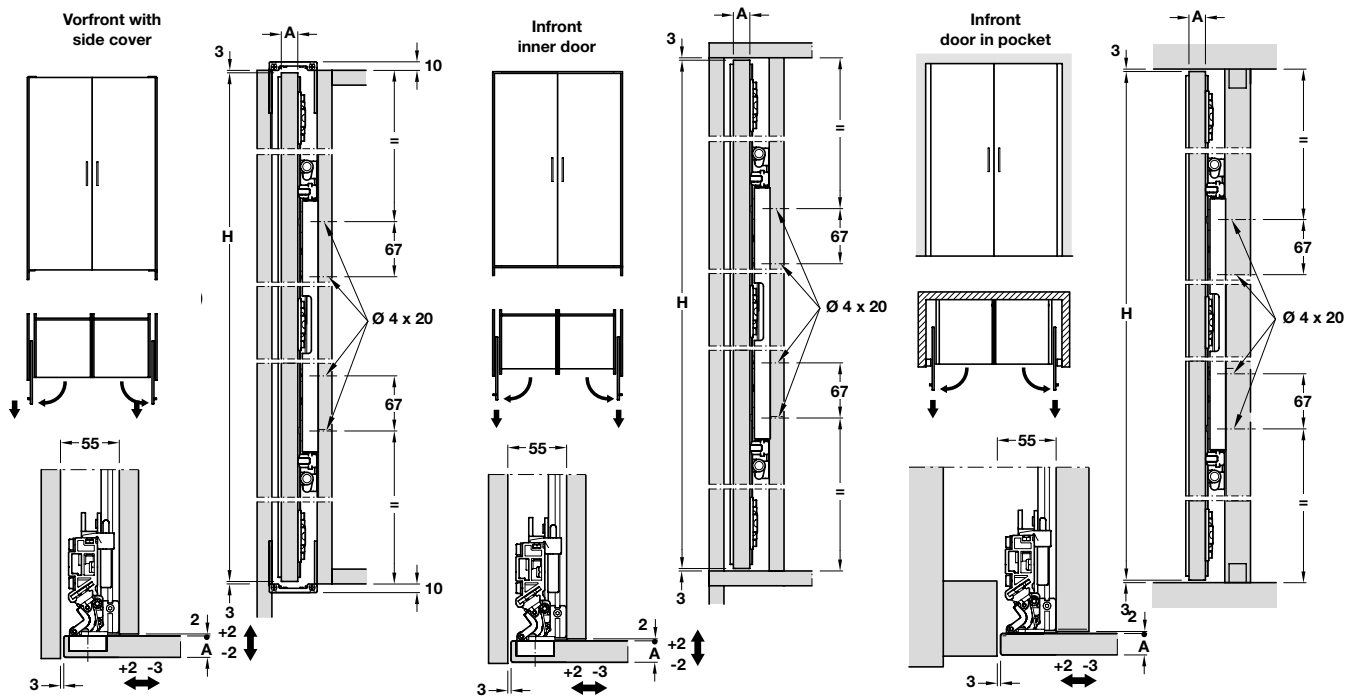
Door height 1990 - 2200 mm

Door height 2200 - 2700 mm

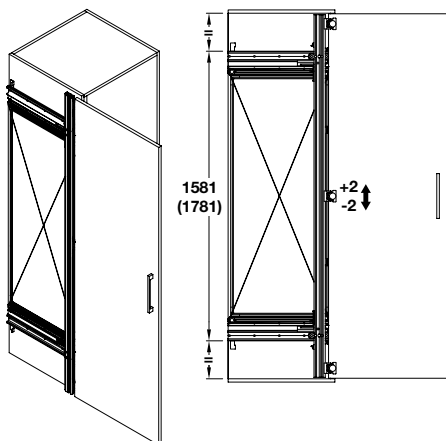


Application





Finetta spinfront 30/50 1D complete set



> Order qty: 1 set



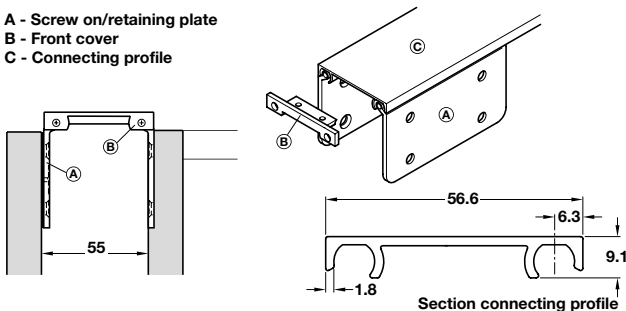
The mechanisms are ready for installation, it is not necessary to remove or prepare components. The total door leaf plus hinge should be fixed to the aluminium bar of the system



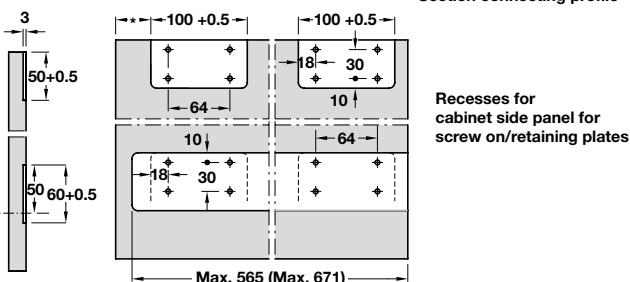
Door height	Internal installation depth	For 1 door
1990 - 2200 mm	560 mm	408.45.020
1990 - 2200 mm	665 mm	408.45.021
2200 - 2700 mm	560 mm	408.45.022
2200 - 2700 mm	665 mm	408.45.023
Additional hinge (1 pc)	-	408.45.110

Connecting plate and profile, for external or cabinet body connections

- A - Screw on/retaining plate
- B - Front cover
- C - Connecting profile



- > Order plate and profile separately:
- > Connecting plate and front cover set
- > Set consists of:
 - > Screw on retaining plate
 - > Front cover
 - > Connecting profile
- > Connection and cover at the top and bottom
- > Silver coloured anodised aluminium
- > Order qty: 1 set



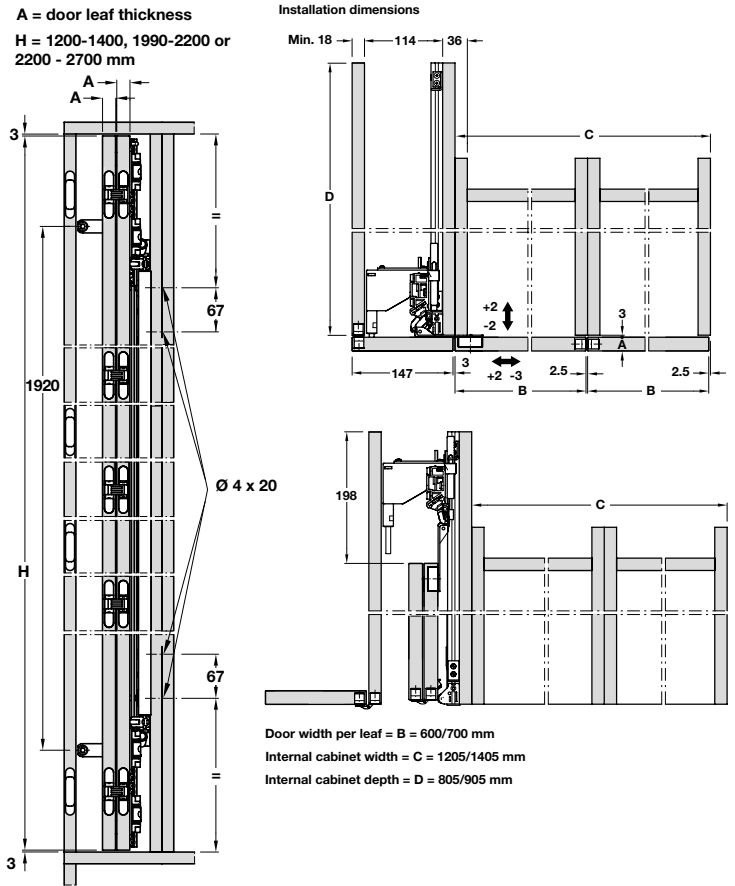
Connecting plate and front cover set		
Cat. No.	408.44.000	
Connecting profile		
Length	1160 mm	3500 mm
Cat. No.	408.43.901	408.43.903

FINETTA SPINFRONT 60 FOR DOUBLE PIVOT DOORS

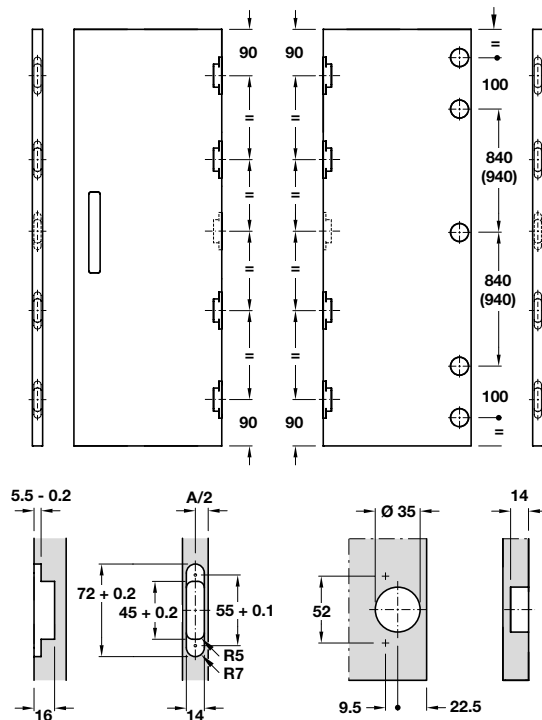
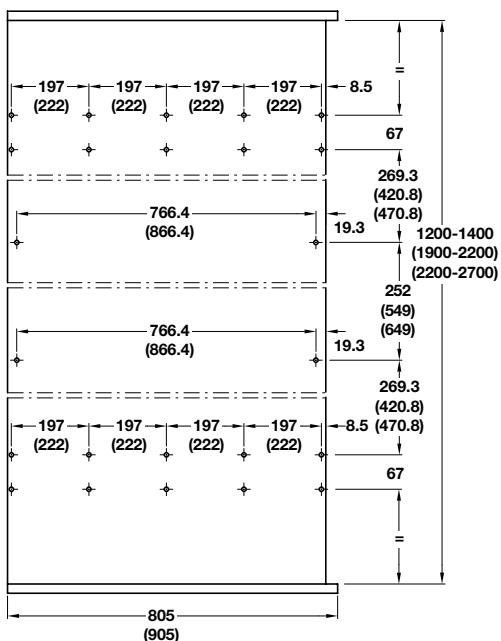
Unique system for bi-folding doors that open as conventional doors then push away from view back into the cabinet.



- > Finetta Spinfront 60
- > Range:
For door height: **1200-1400/1990-2200/2200-2700 mm**
For cabinet depth: **805 mm**
Max. door width: **600 mm**
Max. door weight for 5 hinges **30 kg** (per pair of panels **60 kg**)
Door thickness **18 - 30 mm**
- > For left and right hand use
- > Set for a double door folding the same way comprises pivot assembly with backing panel, hinges and sliding mechanism
- > Running gear guided by ball bearing mounted runners



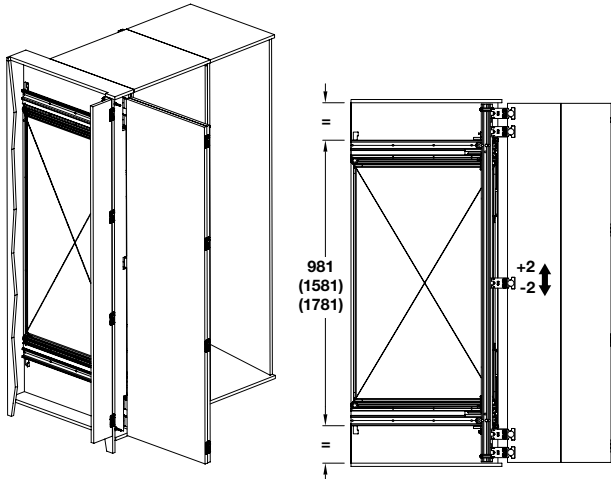
Drilling pattern
Hinges and connection fittings 1200-1400, 1990-2200 (2200 - 2700) mm door height



2021 BM KITCHEN PRODUCTS & APPLIANCES BROCHURE, © Häfele U.K. Ltd 2021. Dimensional data not binding. We reserve the right to alter specifications without notice.

Finetta Spinfront 60 2D complete set

> Order qty: 1 set

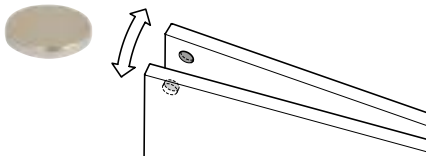


The mechanisms are ready for installation, it is not necessary to remove or prepare components. In particular, we note that the hinges must be fixed to the door leaf as they are in the packaging, after which the total door leaf plus hinge should be fixed to the aluminium bar of the system



Internal installation depth	Door height	For 1 double door
805 mm	1200 - 1400 mm	408.45.008
805 mm	1990 - 2200 mm	408.45.010
805 mm	2200 - 2700 mm	408.45.012
Additional hinge (1 pc)		408.45.111

Magnet

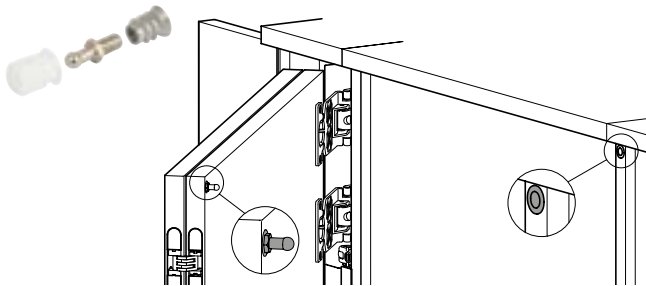


- > For double door applications
- > Folding door leaves
- > Set includes 4 magnets, Ø 20 x 3 mm
- > Order qty: 1 set



Finish	Cat. No.
Polished chrome	408.45.102

Pin and sleeve

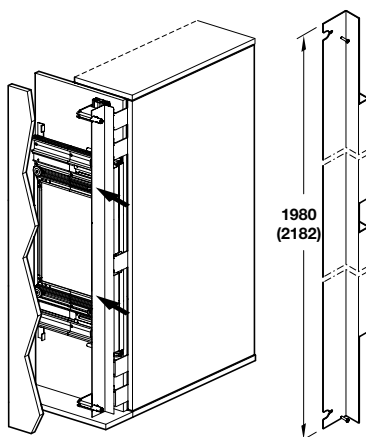


- > For fixing to cabinet
- > Polished chrome pin, galvanized and white plastic inserts
- > Order qty: 1 pc



	Cat. No.
Pin and sleeve	408.45.103

Cover profile



- > 1980 or 2182 mm length
- > For double door applications
- > Satin anodised aluminium
- > Order qty: 1 pc



Door height	Cat. No.
1990 - 2200 mm	408.45.100
2200 - 2700 mm	408.45.101

APPLIANCES



2021 BM KITCHEN PRODUCTS & APPLIANCES BROCHURE, © Hälele U.K. Ltd 2021. Dimensional data not binding. We reserve the right to alter specifications without notice.

SINGLE OVENS

Hoover H500 large multifunction single oven



- > Cooker dimensions: 595 mm wide x 595 mm high x 570 mm depth
- > 8 functions: Light, defrost, fan assisted, conventional, grill, grill and fan, delicate cooking, pizza
- > Features:
 - Large 80 litre capacity
 - Soft close door
 - Touch and rotary controls
 - Chef panel
- > Accessories:
 - 1x 35 mm deep enameled baking tray
 - 2x Safety shelves
 - Removable side racks
 - Telescopic runners, 1 level
- > Hoover 2 year labour, 10 year parts warranty
- > Order qty: 1 pc



2 Year
Warranty

Finish	Model No.	Cat. No.
Black glass and stainless steel	HOAZ7150IN/E	536.08.250

Hoover Vogue compact steam oven



- > Cooker dimensions: 594 mm wide x 455 mm high x 525 mm depth
- > 5 functions: Grill, fan, upper grill and fan, steam, defrost
- > 48 auto menu programmes
- > Features:
 - 34 litre capacity
 - 1500 W steam output
 - 1200 W grill output
 - 1750 W hot air output
 - Full touch control panel
 - Defrost program
 - Electronic timer
 - Child safety lock
 - Cook book
- > Accessories:
 - 1x Shelf
 - 1x Grill rack
 - 1.2 litre water tank
- > Hoover 2 year labour, 10 year parts warranty
- > Order qty: 1 pc



2 Year
Warranty

Finish	Model No.	Cat. No.
Black glass and stainless steel	HMS340VX	536.08.190



Power supply: 13 Amp power supply required for all single ovens

Candy multifunction single oven



Stainless steel finish



Black finish



White finish

- > Dimensions: 595 mm wide x 595 mm high x 568 mm depth
- > 4 functions: Fan assisted, top element and fan, maxi grill and light
- > 65 litre capacity
- > Features:
 - LED full programmer (touch)
 - Touch rotary controls
 - Oven light
 - Cooling fan
 - Variable grill
 - Double glazed door
- > Accessories:
 - 1x Enamelled baking tray, 35 mm
 - 2x Safety shelves
 - 1x Trivet
- > Candy 2 year labour, 10 year parts warranty
- > Order qty: 1 pc



Finish	Model No.	Cat. No.
Stainless steel	FCP405X/E	536.08.080
Black	FCP405N/E	536.08.300
White	FCP405W/E	536.08.301

Candy multifunction single oven



Stainless steel finish



Black finish

- > Dimensions: 595 mm wide x 595 mm high x 568 mm depth
- > 4 functions: Fan assisted, top element and fan, maxi grill and light
- > 65 litre capacity
- > Features:
 - Minute minder with auto-shut off
 - Rotary controls
 - Oven light
 - Cooling fan
 - Variable grill
 - Double glazed door
 - Mark resistant stainless steel control panel (536.08.311 only)
- > Accessories:
 - 1x Enamelled baking tray, 35 mm
 - 2x Safety shelves
 - 1x Trivet
- > Candy 2 year labour, 10 year parts warranty
- > Order qty: 1 pc



Finish	Model No.	Cat. No.
Black	FCP403N/E	536.08.310
Stainless steel	FCP403X/E	536.08.311



Power supply: 13 Amp power supply required for all single ovens

DOUBLE OVENS

Hoover H300 built-in multifunction double oven



- > Dimensions: 595 mm wide x 885 mm high x 545 mm depth
- > Top conventional oven
 - 4 functions: Conventional, bottom element, maxi grill, pizza and light
 - 42 litre capacity
 - Rotary controls
- > Bottom multifunction oven
 - 8 functions: Defrost, fan cooking, conventional, bottom element and fan, maxi grill, maxi grill and fan, pizza and light
 - 68 litre capacity
 - Rotary controls
- > Features:
 - Vapour cleaning
 - Double glazed doors
 - Removable doors
 - Oven light
 - Cooling fan
 - Variable grill
- > Accessories:
 - 1x Enamelled baking tray, 35 mm
 - 3x Safety shelves
 - 1x Trivet
 - Removable side racks
 - Telescopic runners, 1 level
- > Hoover 2 year labour, 10 year parts warranty
- > Order qty: 1 pc



Hoover H300 built under multifunction double oven



- > Dimensions: 554 mm wide x 708 mm high x 550 mm depth
- > Top conventional oven
 - 4 functions: Conventional, bottom element, maxi grill and light
 - 42 litre capacity
 - Rotary controls
- > Bottom fan oven
 - 4 functions: Fan cooking, maxi grill, maxi grill and fan, light
 - 42 litre capacity
 - Rotary controls
- > Features:
 - Vapour cleaning
 - Double glazed doors
 - Removable doors
 - Oven light
 - Cooling fan
 - Variable grill
- > Accessories:
 - 1x Enamelled baking tray, 35 mm
 - 3x Safety shelves
 - 1x Trivet
 - Removable side racks
- > Hoover 2 year labour, 10 year parts warranty
- > Order qty: 1 pc



2 Year Warranty

Finish	Model No.	Cat. No.
Black glass and stainless steel	HO9DC3H308IN	536.08.200



2 Year Warranty

Finish	Model No.	Cat. No.
Black glass and stainless steel	HO7DC3B308IN	536.08.461



Power supply: 25 Amp power supply required for all double ovens

WARMING DRAWERS



Hoover and Candy warming drawers are suitable for fitting directly beneath a 600 mm height single oven, 450 mm height compact microwave or 900 mm height double oven

Hoover Vogue warming drawer, 145 mm



- > Drawer dimensions: 596 mm wide x 145 mm high x 540 mm depth
- > Suitable for fitting directly beneath a Hoover 600 mm height single oven, 450 mm height compact microwave or 900 mm height double oven
- > Adjustable temperature between 30-70 °C
- > Integrated hot air fan
- > Heater on the side
- > Rotary control
- > On/Off indicator
- > Fully extendable telescopic drawer
- > Accommodates dinnerware for 6 people
- > 20 litre capacity
- > Hoover 2 year labour, 10 year parts warranty
- > Order qty: 1 pc

2 Year Warranty

Finish	Model No.	Cat. No.
Black	HPWD140/1N	536.58.920
Stainless steel	HPWD140/1X	536.58.930

Candy warming drawer, 140 mm



- > Drawer dimensions: 595 mm wide x 140 mm high x 545 mm depth
- > Suitable for fitting directly beneath a Candy 600 mm height single oven, 450 mm height compact microwave or 900 mm height double oven
- > Adjustable temperature between 30-70 °C
- > Integrated hot air fan
- > Heater on the side
- > Rotary control
- > On/Off indicator
- > Fully extendable telescopic drawer
- > Accommodates dinnerware for 6 people
- > 20 litre capacity
- > Candy 2 year labour, 10 year parts warranty
- > Order qty: 1 pc

2 Year Warranty

Finish	Model No.	Cat. No.
Stainless steel	CPWD140/2X	536.58.910



Power supply: 13 Amp power supply required for all single ovens

MICROWAVE OVENS

Hoover H300 built-in combination microwave oven



- > Oven dimensions: 595 mm wide x 455 mm high x 542 mm depth
- > 9 functions
- > 13 auto programmes
- > Features:
 - 44 litre capacity
 - Defrost by time and weight
 - Combined touch and rotary controls
 - Stainless steel interior
 - Front opening double glazed door
 - Internal light
 - Electronic timer
 - Audible signal at the end of cooking
 - Child safety lock
- > Microwave output: 900W. Grill output: 1750W
- > Maximum hot air output: 1750W
- > Ø 360 mm enamelled turntable
- > Accessories: 1x enamel tray, 1x grill rack, 1x cook book
- > Hoover 2 year labour, 10 year parts warranty
- > Order qty: 1 pc

2 Year
Warranty

Finish	Model No.	Cat. No.
Black glass and stainless steel	HMC440C3H	536.38.120

Hoover H300 built-in combination microwave oven



- > Oven dimensions: 594 mm wide x 455 mm high x 553 mm depth
- > 8 functions
- > 5 power levels
- > Features:
 - 34 litre capacity
 - Automatic recipes setting
 - Defrost by time and weight
 - LCD full programmer with temperature and function display
 - Combined touch and rotary controls
 - Stainless steel interior
 - Front opening double glazed door
 - Internal light
 - Audible signal at the end of cooking
- > Microwave output: 900W. Grill output: 1550W
- > Maximum hot air output: 1550W
- > Ø 320 mm turntable
- > Accessories: 1x inox tray with grid, 1x round rack
- > Hoover 2 year labour, 10 year parts warranty
- > Order qty: 1 pc

2 Year
Warranty

Finish	Model No.	Cat. No.
Black glass and stainless steel	HMG440C3H	536.38.110

Candy built-in combination microwave oven



- > Oven dimensions: 595 mm wide x 388 mm high x 337 mm depth
- > Min. cabinet depth: 550 mm
- > 3 functions: Microwave, grill, microwave and grill
- > 5 power levels
- > Features:
 - 25 litre capacity
 - 8 auto-programs
 - Defrost by time and weight
 - LED minute minder
 - Rotary/Push button controls. Push button door opening
 - Safety lock
 - Stainless steel interior
 - Quick start function
 - Internal light
 - Audible signal at the end of cooking
 - Frameless
- > Microwave output: 900W. Grill output: 1000W
- > Accessories: 1x Ø 315 mm glass turntable, 1x Grill rack
- > Candy 2 year labour, 10 year parts warranty
- > Order qty: 1 pc

2 Year
Warranty

Finish	Model No.	Cat. No.
Stainless steel	MIC25GDFX-80	536.38.040



Power supply: 13 Amp power supply required for all microwave ovens

Candy built-in combination microwave oven



- > Oven dimensions: 595 mm wide x 388 mm high x 337 mm depth
- > Min. cabinet depth: 550 mm
- > 3 functions: Microwave, grill, microwave and grill
- > 5 power levels
- > Features:
 - 20 litre capacity
 - 10 auto-programs
 - Defrost by time and weight
 - LED minute minder
 - Rotary/Push button controls. Push button door opening
 - Safety lock
 - Stainless steel interior
 - Quick start function
 - Internal light
 - Audible signal at the end of cooking
 - Frameless
- > Microwave output: 800W
- > Grill output: 1000W
- > Accessories: 1x Ø 245 mm glass turntable, 1x Grill rack
- > Candy 2 year labour, 10 year parts warranty
- > Order qty: 1 pc

2 Year Warranty



Power supply: 13 Amp power supply required for all microwave ovens

Finish	Model No.	Cat. No.
Stainless steel	MIC20GDFX-80	536.38.070

Hoover H100 built-in microwave oven with grill, 20 litre



- > Oven dimensions: 595 mm wide x 460 mm high x 470 mm depth
- > Min. cavity depth: 550 mm
- > 3 functions: Microwave, grill, microwave and grill
- > 5 power levels
- > Features:
 - 20 litre capacity
 - 8 auto-programs
 - Defrost by time and weight
 - Auto reheat
 - LED minute minder (white display)
 - Rotary/Push button control operation
 - Push button door mechanism
 - Safety lock
 - Quick start function
 - Internal light
 - Audible signal at the end of cooking
 - Stainless steel interior
- > Microwave output: 800W
- > Grill output: 1000W
- > Accessories: 1x Ø 245 mm glass turntable, 1x Grill rack
- > Hoover 2 year labour, 10 year parts warranty
- > Order qty: 1 pc

2 Year Warranty

Finish	Model No.	Cat. No.
Stainless steel	HMG201X-80	536.38.010

Hoover H100 built-in microwave oven with grill, 17 litre



- > Oven dimensions: 595 mm wide x 388 mm high x 343 mm depth
- > Min. cavity depth: 340 mm
- > 3 functions: Microwave, grill, microwave and grill
- > 5 power levels
- > Features:
 - 17 litre capacity
 - 8 auto-programs
 - Defrost by time and weight
 - Auto reheat
 - LED minute minder (white display)
 - Rotary/Push button control operation
 - Push button door mechanism
 - Safety lock
 - Quick start function
 - Internal light
 - Audible signal at the end of cooking
 - Stainless steel interior
- > Microwave output: 700W
- > Grill output: 1000W
- > Accessories: 1x Ø 245 mm glass turntable, 1x Grill rack
- > Hoover 2 year labour, 10 year parts warranty
- > Order qty: 1 pc

2 Year Warranty

Finish	Model No.	Cat. No.
Stainless steel	HMG171X-80	536.38.020

INDUCTION HOBS

Hoover flexi zone induction hob, 800 mm



- > Dimensions: 770 mm width x 520 mm depth x 60 mm height
- > Cut out: 750 x 495 mm
- > 4 induction zones: 1x 3000 W Ø 280 mm zone, 1x 3000 W Ø 140 mm zone, 1x 4000 W Ø 220/405 mm zone, 1x 2000 W Ø 200 mm zone
- > 2 power levels
- > Straight edge glass
- > Features:
 - 1x 4000 W multi zone, 405 x 220 mm
 - Front touch slider control operation. Safety lock
 - 4x individual residual heat indicators
 - 4x independent induction generators
 - Independent electronic timer, for each zone, which safely switch-off the cooking zone when the cooking time expires
 - Power management functions: Allows you to automatically limit the power of the cooktop and avoid overloading. You will be able to select between 4 different levels
 - Pan compatibility detection
- > Hoover 2 year labour, 10 year parts warranty
- > Order qty: 1 pc

2 Year Warranty

Finish	Model No.	Cat. No.
Black glass	HPI82	536.08.530

Hoover induction hob, 600 mm



- > Dimensions: 590 mm width x 520 mm depth x 60 mm height
- > Cut out: 494 x 564 mm
- > 4 induction zones: 1x 1500 W, Ø 210 mm zone, 2x 2200 W, Ø 180 mm zone, 1x 1500 W, Ø 180 mm zone
- > 4 power levels
- > Straight edge glass
- > Features:
 - Touch controls. Safety lock
 - 4x individual residual heat indicators
 - 4x independent induction generators
 - Dedicated space for larger pots thanks to the Ø 210 mm rear right zone. Spaces for 3 smaller pots thanks to 3x Ø 180 mm zones
 - Electronic timer, which safely switch-off the cooking zone when the cooking time expires
 - Power management functions: Allows you to automatically limit the power of the cooktop and avoid overloading. You will be able to select between 4 different levels
 - Quick pause function: Conveniently switch all (or only one) cooking zones to a low power setting. When you're ready again, touch it a second time to return immediately to your original power level
 - Pan compatibility detection
- > Hoover 2 year labour, 10 year parts warranty
- > Order qty: 1 pc

2 Year Warranty

Finish	Model No.	Cat. No.
Black glass	HIC642	536.08.700

Candy Domino induction hob, 300 mm



- > Dimensions: 288 mm width x 520 mm depth x 55 mm height
- > Cut out: 500 x 268 mm
- > 2 induction zones with booster: 1x 1500 W Ø 180 mm zone, 1x 2000 W Ø 140 mm zone
- > 1 power level
- > Straight edge glass
- > Features:
 - Front touch controls
 - Safety lock
 - 2x individual residual heat indicators
 - 2x independent induction generators
 - Independent electronic timer, for each zone, which safely switch-off the cooking zone when the cooking time expires
 - Pan compatibility detection
- > Candy 2 year labour, 10 year parts warranty
- > Order qty: 1 pc

2 Year Warranty

Finish	Model No.	Cat. No.
Black glass	CDIC30	536.08.650

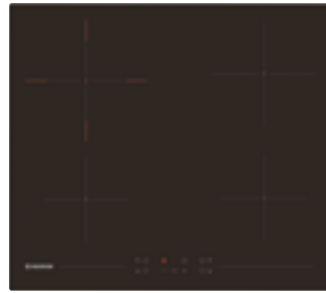


Power supply: 13 Amp power supply required for all induction hobs

CERAMIC HOBS



Hoover ceramic hob, 600 mm



- > Dimensions: 590 mm width x 520 mm depth x 50.5 mm height
- > Cut out: 490 x 560 mm
- > 4 high-light cooking zones: 1x 1200 W, Ø 130 x 220 mm bridge zone, 1x 2200 W, Ø 190 mm zone, 1x 1800 W, Ø 155 mm zone, 1x 1200 W, Ø 155 mm zone
- > 2 power levels
- > Ceramic glass, straight edge
- > Features:
 - Front touch control operation. Coloured serigraphy. Safety lock
 - 4x individual residual heat indicators
 - Electronic timer
 - Power management function: Allows you to set the maximum power of the hob to prevent electrical overloading
- > Hoover 2 year labour, 10 year parts warranty
- > Order qty: 1 pc

2 Year Warranty

Finish	Model No.	Cat. No.
Black glass	HH64DCT	536.08.560

Candy ceramic hob, 600 mm



- > Dimensions: 590 mm width x 520 mm depth x 50 mm height
- > Cut out: 494 x 560 mm
- > 4 high-light cooking zones: 1x 1200 W Ø 155 mm zone, 1x 1800 W Ø 155 mm zone, 1x 2300 W Ø 190 mm zone, 1x 1200 W Ø 220 mm zone
- > 2 power levels
- > Ceramic glass, straight edge
- > Features:
 - Front touch control operation. Safety lock
 - 4x individual residual heat indicators
 - Power management function: Allows you to set the maximum power of the hob to prevent electrical overloading
- > Candy 2 year labour, 10 year parts warranty
- > Order qty: 1 pc

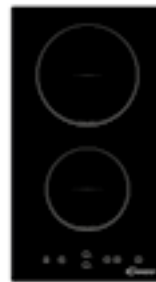
2 Year Warranty

Finish	Model No.	Cat. No.
Black glass	CH64CCB	536.08.610



Power supply: 13 Amp power supply required for all ceramic hobs

Candy Domino ceramic hob, 300 mm



- > Dimensions: 288 mm width x 520 mm depth x 55 mm height
- > Cut out: 500 x 268 mm
- > 2 high-light cooking zones: 1x 1200 W Ø 165 mm zone, 1x 1800 W Ø 200 mm zone
- > 9 power levels
- > Ceramic glass, straight edge
- > Features:
 - Front touch control operation. Safety lock
 - 2x individual residual heat indicators
 - Independent electronic timer, for each zone, which safely switch-off the cooking zone when the cooking time expires
- > Candy 2 year labour, 10 year parts warranty
- > Order qty: 1 pc

2 Year Warranty

Finish	Model No.	Cat. No.
Black glass	CDHC30	536.08.660

GAS HOBS

Hoover H300 gas hob, 600 mm



- > Dimensions: 595 mm width x 510 mm depth x 80 mm height
- > Cut out: 480 x 560 mm
- > 4 gas burners: 1x 2500 W rapid burner, 2x 1700 W semi-rapid burner, 1x 1000 W auxiliary burner
- > Features:
 - Enamelled pan supports
 - Side rotary controls
 - Automatic ignition. Flame failure safety device
- > Accessories: LPG conversion kit
- > Hoover 2 year labour, 10 year parts warranty
- > Order qty: 1 pc

2 Year
Warranty

Finish	Model No.	Cat. No.
Stainless steel	HHW6LK3X	536.68.501

Hoover H300 gas hob, 750 mm



- > Dimensions: 745 mm width x 510 mm depth x 35 mm height
- > Cut out: 480 x 560 mm
- > 5 gas burners: 1x 5000 W double ring, 2x 2700 W rapid burner, 1x 1750 W semi-rapid burner, 1x 1000 W auxiliary burner
- > Features:
 - Heavy duty cast iron pan supports
 - Front rotary controls
 - Automatic ignition. Flame failure safety device
- > Accessories: LPG conversion kit
- > Hoover 2 year labour, 10 year parts warranty
- > Order qty: 1 pc

2 Year
Warranty

Finish	Model No.	Cat. No.
Stainless steel	HHG75WK3X	536.68.533

Candy gas hob, 600 mm



- > Dimensions: 595 mm width x 510 mm depth x 8 mm height
- > Cut out: 480 x 560 mm
- > 4 burners: 2x 2500 W rapid burner, 1x 1750 W semi rapid burner, 1x 1000 W auxiliary burner
- > Features:
 - Cast iron pan supports
 - Side rotary controls
 - Automatic ignition
 - Flame failure safety device
 - Silver control knobs
- > Accessories: LPG conversion kit
- > Candy 2 year labour, 10 year parts warranty
- > Order qty: 1 pc

2 Year
Warranty

Finish	Model No.	Cat. No.
Stainless steel	CHG6LX	536.08.620

Candy gas hob, 600 mm



Black finish



Stainless steel finish

- > Dimensions: 595 mm width x 510 mm depth x 8 mm height
- > Cut out: 480 x 560 mm
- > 4 burners: 1x 2500 W rapid burner, 1x 4000 W double ring burner, 1x 1750 W semi rapid burner, 1x 1000 W auxiliary burner
- > Features:
 - Enamelled pan supports
 - Side rotary controls
 - Automatic ignition
 - Flame failure safety device
 - Silver or black control knobs
- > Accessories: LPG conversion kit
- > Candy 2 year labour, 10 year parts warranty
- > Order qty: 1 pc

2 Year
Warranty

Finish	Model No.	Cat. No.
Stainless steel	CHW6LX	536.08.630
Black	CHW6LBB	536.08.800



Power supply: 13 Amp power supply required for all gas hobs

COOKER HOODS

Hoover chimney hood, 900 mm



- > Dimensions: 900 mm width x 500 mm depth x 550-1030 mm height
- > Outlet: 150 mm, reducer 120 mm
- > Extraction or recirculation
- > 3 speeds
- > Push button control operation
- > 2x LED lights
- > Extraction capacity: 496 m³/h
- > Noise level: 65 dB
- > Accessories:
 - 2x washable aluminium grease filters
- > Hoover 2 year labour, 10 year parts warranty
- > Order qty: 1 pc

Hoover chimney hood, 600 mm



- > Dimensions: 598 mm width x 500 mm depth x 550-1030 mm height
- > Outlet: 150 mm, reducer 120 mm
- > Extraction or recirculation
- > 3 speeds
- > Push button control operation
- > 2x LED lights
- > Extraction capacity: 493 m³/h
- > Noise level: 66 dB
- > Accessories:
 - 1x washable aluminium grease filter
- > Hoover 2 year labour, 10 year parts warranty
- > Order qty: 1 pc



2 Year Warranty

Finish	Model No.	Cat. No.
Stainless steel and glass	HGM900X	536.88.500



2 Year Warranty

Finish	Model No.	Cat. No.
Stainless steel and glass	HGM600X	536.88.510

Hoover chimney hood, 600 mm



- > Stainless steel finish



- > Black finish

- > Dimensions: 600 mm width x 500 mm depth x 573-943 mm height
- > Outlet: 150 mm, reducer 120 mm
- > Extraction or recirculation
- > 3 speeds
- > Push button control operation
- > 1x LED light
- > Extraction capacity: 525 m³/h
- > Noise level: 67 dB
- > Accessories:
 - 2x washable aluminium grease filters
- > Hoover 2 year labour, 10 year parts warranty
- > Order qty: 1 pc



2 Year Warranty

Finish	Model No.	Cat. No.
Stainless steel	HCE160X	536.88.520
Black	HCE160N	536.88.660



Power supply: 13 Amp power supply required for all chimney hoods

Candy sloped chimney hood, 600 mm



- > Dimensions: 600 mm width x 430 mm depth x 760 mm height
- > Outlet: Ø 150 mm
- > Extraction or recirculation
- > 3 speeds
- > Push button control operation
- > 2x LED lights
- > Extraction capacity: 463 m³/h
- > Noise level: 65 dB
- > Accessories: 2x washable aluminium grease filters
- > Candy 2 year labour, 10 year parts warranty
- > Order qty: 1 pc



2 Year Warranty

Finish	Model No.	Cat. No.
Black glass	CVMAD60/1N	536.88.530

Candy Decor chimney hood, 900 mm



- > Stainless steel finish



- > Black finish
- > Dimensions: 895 mm width x 500 mm depth x 560-1040 mm height
- > Extraction or recirculation
- > 3 speeds
- > Push button control operation
- > 2x LED lights
- > Extraction capacity: 456 m³/h
- > Noise level: 56 dB
- > Accessories: 2x washable aluminium grease filters, 1x carbon filter
- > Candy 2 year labour, 10 year parts warranty
- > Order qty: 1 pc



2 Year Warranty

Finish	Model No.	Cat. No.
Stainless steel and glass	CGM90NX	536.88.610
Black and glass	CGM90NN	536.88.615

Candy Decor chimney hood, 600 mm



- > Stainless steel finish



- > Black finish
- > Dimensions: 595 mm width x 500 mm depth x 560-1040 mm height
- > Extraction or recirculation
- > 3 speeds
- > Push button control operation
- > 1x LED light
- > Extraction capacity: 456 m³/h
- > Noise level: 56 dB
- > Accessories: 1x washable aluminium grease filter, 1x carbon filter
- > Candy 2 year labour, 10 year parts warranty
- > Order qty: 1 pc



2 Year Warranty

Finish	Model No.	Cat. No.
Stainless steel and glass	CGM60NX	536.88.611
Black and glass	CGM60NN	536.88.612



Power supply: 13 Amp power supply required for all chimney hoods

Candy chimney hood, 900 mm



> Stainless steel finish



> Black finish

- > Dimensions: 900 mm width x 480 mm depth x 573-940 mm height
- > Outlet: Ø 150 mm
- > Extraction or recirculation
- > 3 speeds
- > Push button control operation, chrome buttons
- > 2x LED lights
- > Extraction capacity: 305 m³/h
- > Noise level: 62 dB
- > Accessories: 3x washable aluminium grease filters, 1x Carbon filter
- > Candy 2 year labour, 10 year parts warranty
- > Order qty: 1 pc



Finish	Model No.	Cat. No.
Stainless steel	CCE90NX	536.88.540
Black	CCE90NN	536.88.541

Candy chimney hood, 600 mm



> Stainless steel finish



> Black finish

- > Dimensions: 600 mm width x 500 mm depth x 573-943 mm height
- > Outlet: Ø 150 mm
- > Extraction or recirculation
- > 3 speeds
- > Push button control operation, chrome buttons
- > 2x LED lights
- > Extraction capacity: 305 m³/h
- > Noise level: 62 dB
- > Accessories: 2x washable aluminium grease filters, 1x Carbon filter
- > Candy 2 year labour, 10 year parts warranty
- > Order qty: 1 pc



Finish	Model No.	Cat. No.
Stainless steel	CCE60NX	536.88.550
Black	CCE60NN	536.88.551

Candy canopy hood, 520 mm



White finish



Black finish



Stainless steel finish

- > Dimensions: 520 mm width x 280 mm depth x 130 mm height
- > Outlet: Ø 150 mm
- > Extraction or recirculation
- > 3 speeds
- > Push button control operation
- > 2x LED lights
- > Extraction capacity: 207 m³/h
- > Noise level: 63 dB
- > Accessories: 1x aluminium grease filter, 1x carbon filter
- > Candy 2 year labour, 10 year parts warranty
- > Order qty: 1 pc



Finish	Model No.	Cat. No.
Stainless steel	CBG52SX	536.88.622
Black	CBG625/1N	536.88.620
White	CBG625/1W	536.88.621



Power supply: 13 Amp power supply required for all chimney hoods

INTEGRATED REFRIGERATION

Hoover H300 integrated 50:50 frost free fridge freezer



- > Dimensions: 1770 mm height x 540 mm width x 540 mm depth
- > Total capacity (net): 233 litres
- > Refrigerator (net): 147 litres
- > Freezer (net): 86 litres
- > Features:
 - 4 Star rating
 - Standard compressor
 - Digital controls
 - Automatic fridge defrost
 - Frost free freezer
 - Freezing capacity: 3.0 kg/24hr
 - LED sky lighting
 - Sky fan
 - Adjustable thermostat, electronic control
 - Reversible door hinge
 - Adjustable feet
 - Slider fittings
- > Refrigerator interior: 4x Safety glass shelves, 1x Chrome wine rack, 1x Full width salad crisper drawer, 3x Door shelves including bottle shelf, 1x Egg tray
- > Freezer interior: 3x Transparent drawers, 1x Transparent flap, 1x Ice cube tray
- > Noise: 43 dB
- > Hoover 2 year labour, 10 year parts warranty
- > Order qty: 1 pc



2 Year Warranty

Finish	Model No.	Cat. No.
White	BHBF172UKT/N	536.18.000

Hoover H300 integrated 50:50 fridge freezer



- > Dimensions: 1770 mm height x 540 mm width x 540 mm depth
- > Total capacity (net): 242 litres
- > Refrigerator (net): 148 litres
- > Freezer (net): 94 litres
- > Features:
 - 4 Star rating
 - Standard compressor
 - Digital controls
 - Automatic fridge defrost
 - Manual defrost freezer
 - Freezing capacity: 5.0 kg/24hr
 - LED sky lighting
 - Adjustable thermostat, electronic control
 - Humidity controller on salad crisper
 - Reversible door hinge
 - Slider fittings
- > Refrigerator interior: 4x Safety glass shelves, 1x Chrome wine rack, 1x Full width salad crisper drawer, 3x Door shelves including bottle shelf, 1x Egg tray
- > Freezer interior: 3x Transparent drawers, 1x Transparent flap, 1x Ice cube tray
- > Noise: 38 dB
- > Hoover 2 year labour, 10 year parts warranty
- > Order qty: 1 pc



2 Year Warranty

Finish	Model No.	Cat. No.
White	BHBS172UKT/N	536.18.010

Hoover integrated 70:30 frost free fridge freezer



- > Dimensions: 1769 mm height x 540 mm width x 545 mm depth
- > Total capacity (net): 240 litres
- > Refrigerator (net): 190 litres
- > Freezer (net): 50 litres
- > Features:
 - 4 Star rating
 - Standard compressor
 - Digital controls
 - Automatic fridge defrost
 - Frost free freezer
 - Freezing capacity: 3.5 kg/24hr
 - LED sky lighting
 - Adjustable thermostat, electronic control
 - Right hand hinge
 - Adjustable feet
 - Slider fittings
- > Refrigerator interior: 3x Safety glass shelves, 1x Chrome wine rack, 1x Full width salad crisper drawer, 1x Chiller drawer, 3x Door shelves including bottle shelf, 1x Egg tray
- > Freezer interior: 3x Transparent drawers, 1x Ice cube tray
- > Noise: 43 dB
- > Hoover 2 year labour, 10 year parts warranty
- > Order qty: 1 pc



2 Year Warranty

Finish	Model No.	Cat. No.
White	BHBF172NUK	536.18.020

Hoover integrated 70:30 fridge freezer



- > Dimensions: 1769 mm height x 540 mm width x 545 mm depth
- > Total capacity (net): 250 litres
- > Refrigerator (net): 190 litres
- > Freezer (net): 60 litres
- > Features:
 - 4 Star rating
 - Standard compressor
 - Touch controls
 - Manual defrost freezer
 - Freezing capacity: 3.5 kg/24hr
 - LED sky lighting
 - Adjustable thermostat, electronic control
 - Reversible door hinge
 - Adjustable feet
 - Slider fittings
- > Refrigerator interior: 3x Safety glass shelves, 1x Chrome wine rack, 1x Full width salad crisper drawer, 1x Chiller drawer, 3x Door shelves including bottle shelf, 1x Egg tray
- > Freezer interior: 3x Transparent drawers, 1x Transparent flap, 1x Ice cube tray
- > Noise: 40 dB
- > Hoover 2 year labour, 10 year parts warranty
- > Order qty: 1 pc



2 Year Warranty

Finish	Model No.	Cat. No.
White	HBBS100UK/N	536.18.030

2021 BM KITCHEN PRODUCTS & APPLIANCES BROCHURE, © Hälele U.K. Ltd 2021. Dimensional data not binding. We reserve the right to alter specifications without notice.

Candy integrated 50:50 frost free fridge freezer



- > Dimensions: 1770 mm height x 540 mm width x 545 mm depth
- > Total capacity (net): 242 litres
- > Refrigerator (net): 148 litres
- > Freezer (net): 94 litres
- > Features:
 - 4 Star rating
 - Mechanical controls
 - Electronic temperature control
 - NFC Smart Touch
 - Automatic fridge defrost
 - Frost free freezer
 - Freezing capacity: 4.5 kg/24hr
 - LED sky lighting
 - Adjustable thermostat
 - Reversible hinge door
 - Adjustable feet
 - Slider fittings
 - Standard compressor
- > Refrigerator interior: 3x Safety glass shelves, 1x Safety glass half shelf, 2x Salad crisper drawers, 3x Door shelves including bottle shelf, 1x Egg tray
- > Freezer interior: 4x Transparent drawers, 1x Ice cube tray
- > Noise: 38 dB
- > Candy 2 year labour, 10 year parts warranty
- > Order qty: 1 pc



2 Year
Warranty

Finish	Model No.	Cat. No.
White	BCBS1725TK/N	536.18.190

Hoover integrated larder fridge



- > Dimensions: 1770 mm height x 540 mm width x 545 mm depth
- > Total capacity (net): 316 litres
- > Features:
 - Standard compressor
 - Push button controls
 - LED sky lighting
 - LED sky fan
 - Adjustable thermostat, electronic control
 - Right hand hinge
 - Adjustable feet
 - Slider fittings
- > Refrigerator interior:
 - 5x Safety glass shelves
 - 2x Full width salad crisper drawers
 - 1x Wine rack
 - 5x Door shelves including bottle shelf
 - 1x Egg tray
- > Noise: 40 dB
- > Hoover 2 year labour, 10 year parts warranty
- > Order qty: 1 pc



2 Year Warranty

Finish	Model No.	Cat. No.
White	HBLO172UK/N	536.18.140

Hoover H500 integrated larder freezer



- > Dimensions: 1776 mm height x 540 mm width x 540 mm depth
- > Total capacity (net): 217 litres
- > Features:
 - 4 Star rating
 - Standard compressor
 - Push button controls
 - Manual defrost freezer
 - Freezing capacity: 10.0 kg/24hr
 - Adjustable thermostat, electronic control
 - Super freeze option
 - Temperature rise warning light
 - Reversible hinge
 - Adjustable feet
 - Slider fittings
- > Freezer interior:
 - 9x Transparent drawers
 - 1x Ice cube tray
- > Noise: 39 dB
- > Hoover 2 year labour, 10 year parts warranty
- > Order qty: 1 pc



2 Year Warranty

Finish	Model No.	Cat. No.
White	HBOU172UK/N	536.18.170

2021 BM KITCHEN PRODUCTS & APPLIANCES BROCHURE, © Hällele U.K. Ltd 2021. Dimensional data not binding. We reserve the right to alter specifications without notice.

Candy integrated larder fridge



- > Dimensions: 1770 mm height x 540 mm width x 545 mm depth
- > Total capacity (net): 316 litres
- > Features:
 - 4 Star rating
 - Push button controls
 - Electronic temperature control
 - LED sky lighting
 - Adjustable thermostat
 - Right hand hinge door
 - Adjustable feet
 - Slider fittings
 - Standard compressor
- > Refrigerator interior:
 - 6x Safety glass shelves
 - 2x Full width salad crisper drawers
 - 5x Door shelves including bottle shelf
 - 1x Egg tray
- > Noise: 40 dB
- > Candy 2 year labour, 10 year parts warranty
- > Order qty: 1 pc



2 Year Warranty

Finish	Model No.	Cat. No.
White	CFLO3550EK/N	536.18.080

Candy integrated larder freezer



- > Dimensions: 1769 mm height x 540 mm width x 545 mm depth
- > Total capacity (net): 200 litres
- > Features:
 - 4 Star rating
 - Push button controls
 - Electronic temperature control
 - Manual defrost freezer
 - Freezing capacity: 10.5 kg/24hr
 - Adjustable thermostat
 - Right hand hinge door
 - Adjustable feet
 - Slider fittings
 - Standard compressor
- > Freezer interior:
 - 9x Transparent drawers
 - 1x Ice cube tray
- > Noise: 39 dB
- > Candy 2 year labour, 10 year parts warranty
- > Order qty: 1 pc



2 Year Warranty

Finish	Model No.	Cat. No.
White	CFFO3550EK/N	536.18.090

Candy integrated under counter fridge



- > Dimensions: 820 mm height x 596 mm width x 550 mm depth
- > Total capacity (net): 135 litres
- > Features:
 - 4 Star rating
 - Electronic temperature control
 - Automatic fridge defrost
 - Adjustable thermostat
 - Reversible door hinge
 - Door on door fittings
 - Standard compressor
- > Refrigerator interior: 3x Safety glass shelves, 1x Full width salad crisper drawer, 2x Door shelves including bottle shelf, 1x Egg tray
- > Noise: 40 dB
- > Candy 2 year labour, 10 year parts warranty
- > Order qty: 1 pc



2 Year Warranty

Finish	Model No.	Cat. No.
White	CRU160NEK/N	536.18.100

Candy integrated under counter freezer



- > Dimensions: 826 mm height x 595 mm width x 556 mm depth
- > Total capacity (net): 95 litres
- > Features:
 - 4 Star rating
 - Electronic temperature control
 - Manual defrost freezer
 - Freezing capacity: 4.5 kg/24hr
 - Adjustable thermostat
 - Temperature rise warning light
 - Reversible door hinge
 - Door on door fittings
 - Standard compressor
- > Freezer interior: 3x Transparent drawers, 1x Ice cube tray
- > Noise: 40 dB
- > Candy 2 year labour, 10 year parts warranty
- > Order qty: 1 pc



2 Year Warranty

Finish	Model No.	Cat. No.
White	CFU135NEK/N	536.18.110

Candy integrated under counter fridge with ice box



- > Dimensions: 826 mm height x 596 mm width x 556 mm depth
- > Total capacity (net): 111 litres
- > Refrigerator (net): 95 litres
- > Ice box (net): 16 litres
- > Features:
 - 4 Star rating
 - Electronic temperature control
 - Manual defrost ice box
 - Automatic fridge defrost
 - Internal light
 - Adjustable thermostat
 - Reversible door hinge
 - Door on door fittings
 - Standard compressor
- > Refrigerator interior: 2x Safety glass shelves, 1x Full width salad crisper drawer, 2x Door shelves including bottle shelf, 1x Egg tray
- > Noise: 40 dB
- > Candy 2 year labour, 10 year parts warranty
- > Order qty: 1 pc



2 Year Warranty

Finish	Model No.	Cat. No.
White	CRU164NEK/N	536.18.160

WINE COOLERS

Hoover wine cabinet, 46 bottle capacity



Hoover wine cabinet, 7 bottle capacity



- > Dimensions: 813 mm height x 595 mm width x 570 mm depth
- > Capacity: 46x 0.75 litre Bordeaux wine bottles
- > Features:
 - Fan assisted operation
 - Low vibration compressor
 - Digital control
 - LED display
 - Celsius and Fahrenheit switch
 - 6x wooden shelves
 - Adjustable temperature, electronic control
 - Internal light
 - Tempered door glass
 - Water drainage
 - One temperature zone: 5-22°C
 - Reversible door
 - Adjustable feet
 - Charcoal filter
- > Noise level: 47 dB
- > Slim stainless steel frame, UV resistant smoked door glass

- > Dimensions: 863 mm height x 150 mm width x 525 mm depth
- > Capacity: 7x 0.75 litre Bordeaux wine bottles
- > Features:
 - Fan assisted operation
 - Low vibration compressor
 - Digital control
 - LED display
 - Celsius and Fahrenheit switch
 - 6x wooden shelves
 - Adjustable temperature, electronic control
 - Internal light
 - Tempered door glass
 - Water drainage
 - Designed to store wine at its optimum temperature between 5-22°C
 - Reversible door
 - Adjustable feet
 - Charcoal filter
- > Noise level: 44 dB
- > Slim stainless steel frame, UV resistant smoked door glass

2021 BM KITCHEN PRODUCTS & APPLIANCES BROCHURE. © Häfele U.K. Ltd 2021. Dimensional data not binding. We reserve the right to alter specifications without notice.



Finish	Model No.	Cat. No.
Black with stainless steel frame	HWCB60UK	536.18.840



Finish	Model No.	Cat. No.
Black with stainless steel frame	HWCB15UK	536.18.830



Power supply: 13 Amp power supply required for all wine coolers

Candy dual temperature wine cabinet, 46 bottle capacity



- > Dimensions: 863 mm height x 595 mm width x 570 mm depth
- > Capacity: 46x 0.75 litre Bordeaux wine bottles
- > Features:
 - Fan assisted operation. Low vibration compressor
 - LED display. Digital controls. Internal light
 - Electronic temperature control. Celsius and Fahrenheit switch
 - 6x wooden shelves. Tempered door glass
 - Adjustable temperature
 - Water drainage
 - Designed to store wine at its optimum temperature between 5-22°C
 - Reversible door. Adjustable feet
- > Noise level: 47 dB
- > Black interior and exterior, stainless steel trim, clear anti UV door glass
- > Candy 2 year labour, 10 year parts warranty
- > Order qty: 1 pc



2 Year Warranty

Finish	Model No.	Cat. No.
Black with stainless steel trim	CCVB60DUK	536.18.850

Candy wine cabinet, 19 bottle capacity



- > Dimensions: 870 mm height x 295 mm width x 570 mm depth
- > Capacity: 19x 0.75 litre Bordeaux wine bottles
- > Features:
 - Fan assisted operation. Low vibration compressor
 - LED display. Digital controls. Internal light
 - Electronic temperature control. Celsius and Fahrenheit switch
 - 6x wooden shelves. Tempered door glass
 - Adjustable temperature
 - Water drainage
 - Designed to store wine at its optimum temperature between 5-22°C
 - Reversible door. Adjustable feet
- > Noise level: 47 dB
- > Black interior and exterior, stainless steel trim, clear anti UV door glass
- > Candy 2 year labour, 10 year parts warranty
- > Order qty: 1 pc



2 Year Warranty

Finish	Model No.	Cat. No.
Black with stainless steel trim	CCVB30UK	536.18.860

Candy wine cabinet, 7 bottle capacity



- > Dimensions: 863 mm height x 150 mm width x 525 mm depth
- > Capacity: 7x 0.75 litre Bordeaux wine bottles
- > Features:
 - Fan assisted operation. Low vibration compressor
 - LED display. Digital controls. Internal light
 - Electronic temperature control. Celsius and Fahrenheit switch
 - 6x wooden shelves. Tempered door glass
 - Adjustable temperature
 - Water drainage
 - Designed to store wine at its optimum temperature between 5-22°C
 - Reversible door. Adjustable feet
- > Noise level: 44 dB
- > Black interior and exterior, stainless steel trim, clear anti UV door glass
- > Candy 2 year labour, 10 year parts warranty
- > Order qty: 1 pc



2 Year Warranty

Finish	Model No.	Cat. No.
Black with stainless steel trim	CCVB15UK	536.18.870



Power supply: 13 Amp power supply required for all wine coolers

DISHWASHERS

Candy integrated slimline dishwasher, 9 place setting



- > Dimensions: 820 mm high x 445 mm wide x 540 mm depth
- > 9 place settings
- > 6 programmes
- > 6 Wash programmes: Intensive, Normal, Economy, Glass, Daily, Rapid
- > Special functions:
 - Half load option
- > 6 Temperatures - range 40-65°C
- > Salt and rinse refill indicators
- > Push button controls
- > Residual drying
- > Concealed heat element
- > Delayed start (up to 12 hours)
- > Height adjustable upper basket
- > Adjustable feet
- > 9 litre water consumption
- > Noise: 52 dB
- > Anti-leak device
- > Anti-flood device
- > Candy 2 year labour, 10 year parts warranty
- > Order qty: 1 pc

2021 BM KITCHEN PRODUCTS & APPLIANCES BROCHURE. © Häfele U.K. Ltd 2021. Dimensional data not binding. We reserve the right to alter specifications without notice.



Finish body/control panel	Model No.	Cat. No.
White/Black	CDI2L952-80/E	536.28.040



Power supply: 13 Amp power supply required for all dishwashers

Hoover H300 integrated dishwasher, 13 place setting



- > Dimensions: 820 mm high x 598 mm wide x 550 mm depth
- > 13 place settings
- > 13 wash programmes: Hygienic, Universal, Daily, Eco, Delicate, Rapid 59 minutes, Rapid 24 minutes, Night, Refresh
- > Special functions:
 - Automatic door opening at end of cycle
 - All in one button
- > 6 temperatures
- > Salt empty indicator
- > Touch controls
- > Residual drying
- > Concealed heat element
- > Delayed start (up to 23 hours)
- > Height adjustable upper basket (easy lift)
- > Slide out cutlery tray
- > Lower basket stop system
- > Adjustable feet
- > 10 litre water consumption
- > Noise: 53 dB
- > Anti-leak device
- > Anti-flood device
- > Hoover 2 year labour, 10 year parts warranty
- > Order qty: 1 pc

Candy integrated dishwasher, 13 place setting



- > Dimensions: 818-898 mm high x 598 mm wide x 550 mm depth
- > 13 place settings
- > 13 programmes
- > 6 Wash programmes: Intensive 70°, Universal 60°, Eco 45°, Rapid 29' 50°, Pre-wash, Smart Touch (NFC)
- > Special functions:
 - Super eco/express option
 - NFC features (Voice assistant, smart check-up, smart cycles)
- > 4 Temperatures - range 45-75°C
- > Push button controls
- > Residual drying
- > Concealed heat element
- > Delayed start (3, 6, 9 hours)
- > Height adjustable upper basket
- > Lower basket stop system
- > Auto cleaning filter
- > Adjustable feet
- > 11 litre water consumption
- > Noise: 53 dB
- > Anti-leak device
- > Anti-flood device
- > Candy 2 year labour, 10 year parts warranty
- > Order qty: 1 pc



2 Year Warranty

Finish/Control panel finish	Model No.	Cat. No.
White/Silver	HDI1LO38SA-80/T	536.28.140



2 Year Warranty

Finish body/control panel	Model No.	Cat. No.
White/Silver	CDI1LS38S-80/T	536.28.030



Power supply: 13 Amp power supply required for all dishwashers

LAUNDRY

Hoover H300 integrated washing machine, 9 kg dry laundry



- > Dimensions: 820 mm high x 600 mm wide x 545 mm depth
- > 16 programmes
- > Programme options: Active Steam, full suite of Total Care programmes, Extra Rinse, Hygiene+
- > KG detector - adjusts wash programmes based on the size of the wash load
- > 14 - 30 - 44 minute rapid wash cycles
- > All in one - wash a full load of mixed colours and whites in 59 minutes
- > Spin speed regulation
- > Separate temperature regulation
- > Large LED display
- > Delay start - 24 hours
- > Digital countdown indicator
- > Safety lock
- > Indicator of door closed
- > Adjustable feet
- > Maximum spin speed: 1500 rpm
- > Max. 9 kg of dry laundry
- > Water consumption: 45 litres per cycle
- > Noise level: 76 dB
- > Stainless steel drum, plastic tub and glass door
- > Hoover 2 year labour, 10 year parts warranty
- > Order qty: 1 pc

Hoover H300 integrated washing machine, 8 kg dry laundry



- > Dimensions: 825 mm high x 600 mm wide x 525 mm depth
- > 15 programmes
- > Programme options: Aquaplus, Hygiene +, Easy iron, Stain level
- > Special programmes: Daily 59 minute, Wool, Handwash and silk, Baby hygiene 60°C, Active Eco 20°C
- > KG detector - adjusts wash programmes based on the size of the wash load
- > 14 - 30 - 44 minute rapid wash cycles
- > All in one - wash a full load of mixed colours and whites in 59 minutes
- > Spin speed regulation
- > Separate temperature regulation
- > LED display
- > Delay start - 24 hours
- > Digital countdown indicator
- > Safety lock
- > Indicator of door closed
- > Adjustable feet
- > Maximum spin speed: 1500 rpm
- > Max. 8 kg of dry laundry
- > Water consumption: 45 litres per cycle
- > Noise level: 77 dB
- > Stainless steel drum, plastic tub and glass door
- > Hoover 2 year labour, 10 year parts warranty
- > Order qty: 1 pc

2021 BM KITCHEN PRODUCTS & APPLIANCES BROCHURE. © Häfele U.K. Ltd 2021. Dimensional data not binding. We reserve the right to alter specifications without notice.



Finish	Model No.	Cat. No.
White with chrome door	HBWS59D1ACE-80	536.98.190



Finish	Model No.	Cat. No.
White with white door	HBWS58D1ACE-80	536.98.010



Power supply: 13 Amp power supply required for all washing machines and dryers

Candy integrated washing machine, 9 kg dry laundry



- > Dimensions: 820 mm high x 596 mm wide x 545 mm depth
- > 16 programmes
- > Programme options: Extra rinse, Hygiene +, Easy iron, Stain level
- > Special programmes: EcoMix 20°C, Baby Care, Silk, Handwash, Wool
- > KG detector - adjusts wash programmes based on the size of the wash load
- > 14 - 30 - 44 minute rapid wash cycles
- > Spin speed regulation
- > Separate temperature regulation
- > LED display
- > Delay start - 24 hours
- > Digital countdown indicator
- > Control panel lock
- > Safety lock
- > Indicator of door closed
- > Adjustable feet
- > Maximum spin speed: 1500 rpm
- > Noise level: 76 dB
- > Max. 9 kg of dry laundry
- > Water consumption: 48 litres per cycle
- > Stainless steel drum, plastic tub and glass door
- > Candy 2 year labour, 10 year parts warranty
- > Order qty: 1 pc

Candy integrated washing machine, 7 kg dry laundry



- > Dimensions: 820 mm high x 596 mm wide x 545 mm depth
- > 16 programmes
- > Programme options: Extra rinse, Hygiene +, Easy iron
- > Special programmes: EcoMix 20°C, Baby Case, Silk, Handwash, Wool
- > KG detector - adjusts wash programmes based on the size of the wash load
- > 14 - 30 - 44 minute rapid wash cycles
- > Spin speed regulation
- > Separate temperature regulation
- > LED display
- > Delay start - 24 hours
- > Digital countdown indicator
- > Control panel lock
- > Safety lock
- > Indicator of door closed
- > Adjustable feet
- > Maximum spin speed: 1500 rpm
- > Noise level: 79 dB
- > Max. 7 kg of dry laundry
- > Water consumption: 45 litres per cycle
- > Stainless steel drum, plastic tub and glass door
- > Candy 2 year labour, 10 year parts warranty
- > Order qty: 1 pc



2 Year Warranty

Finish	Model No.	Cat. No.
White with white door	CBW59D1XE-80	536.98.080



2 Year Warranty

Finish	Model No.	Cat. No.
White with white door	CBW57D1XE-80	536.98.200



Power supply: 13 Amp power supply required for all washing machines and dryers

Hoover H500 integrated washer dryer, 8/5 kg laundry



- > Dimensions: 820 mm high x 600 mm wide x 525 mm depth
- > 15 programmes
- > 59 minute wash and dry cycle
- > KG detector - adjusts wash programmes based on the size of the wash load
- > 14 - 30 - 44 minute rapid wash cycles
- > All in one - wash a full load of mixed colours and whites in 59 minutes
- > Programme Wizard
- > Time manager
- > Playlist
- > Spin speed regulation
- > Separate temperature regulation
- > LED display
- > Delay start - 24 hours
- > Digital countdown indicator
- > Imbalance control system
- > Overflow protection, foam protection
- > Safety lock
- > Fuzzy logic
- > Indicator of door closed
- > Adjustable feet
- > Inverter motor
- > Maximum spin speed: 1500 rpm
- > Washing load: Max. 8 kg
- > Drying load: Max. 5 kg
- > Noise level: 77 dB
- > Stainless steel drum, plastic tub and glass door
- > Hoover 2 year labour, 10 year parts warranty
- > Order qty: 1 pc

Candy H500 integrated washer dryer, 8/5 kg laundry



- > Dimensions: 820 mm high x 600 mm wide x 525 mm depth
- > 16 wash and 3 drying programmes
- > Programme options: Stain level
- > Special programmes: Baby Care, Hand and silk, Wool (wash), Wool (drying) - Woolmark accredited drying programme
- > KG detector - adjusts wash programmes based on the size of the wash load
- > 14 - 30 - 44 minute rapid wash cycles
- > Spin speed regulation
- > Separate temperature regulation
- > LED display
- > Delay start - 24 hours
- > Digital countdown indicator
- > Control panel lock
- > Safety lock
- > Indicator of door closed
- > Adjustable feet
- > Maximum spin speed: 1500 rpm
- > Noise level: 77 dB
- > Washing load: Max. 8 kg of dry laundry
- > Drying load: Max. 5 kg
- > Water consumption: 49 litres per cycle
- > Stainless steel drum, plastic tub and glass door
- > Candy 2 year labour, 10 year parts warranty
- > Order qty: 1 pc

2021 BM KITCHEN PRODUCTS & APPLIANCES BROCHURE. © Häfele U.K. Ltd 2021. Dimensional data not binding. We reserve the right to alter specifications without notice.



2 Year Warranty

Finish	Model No.	Cat. No.
White	HBD585D1E/1-80	536.98.590



2 Year Warranty

Finish	Model No.	Cat. No.
White with chrome door	CBD585D1E/1-80	536.98.610



Power supply: 13 Amp power supply required for all washing machines and dryers

Hoover H700 integrated condenser dryer, 7 kg laundry



**Built in
Condenser
Function**

With an integrated condenser there is no requirement for external ducting. Water collects in the appliance door so you can clearly see when it needs emptying



- > Dimensions: 827-850 mm high x 596 mm wide x 487 mm depth
- > This product is the only integrated condenser dryer on the market with a built in condenser, meaning there is no requirement for external ducting. Water collects in the appliance door allowing users to clearly see when the appliance needs emptying
- > 15 sensor drying programmes
- > Programme options: Anti-crease
- > Specialist drying programmes: All in one, Anti-allergy, Anti-odours, Waterproof revitalize, Wool - Woolmark accredited
- > KG detector - adjusts programmes based on the size of the load
- > All in one - dry different fabric types together and be advised when the lighter garments are dried so you can remove them from the drum
- > Aquavision in door water container
- > Wi-fi features: Programme Wizard, Time manager, Playlist, Operation via App
- > Drying level regulation: Ready to iron, Hanger dry, Wardrobe dry, Extra dry
- > Spin speed regulation
- > Separate temperature regulation
- > LED full touch display
- > Delay start - 24 hours
- > Digital countdown indicator
- > Control panel lock
- > Safety lock
- > Indicator of door closed
- > Adjustable feet
- > Drying load: Max. 7 kg
- > Noise level: 67 dB
- > Stainless steel drum, plastic tub and glass door
- > Hoover 2 year labour, 10 year parts warranty
- > Order qty: 1 pc

Candy integrated condenser dryer, 7 kg laundry



- > Dimensions: 850 mm high x 600 mm wide x 487 mm depth
- > 16 sensor drying programmes
- > Programme options: Anti-crease
- > Specialist drying programmes: Anti-allergy, Baby, Wool - Woolmark accredited
- > KG detector - adjusts programmes based on the size of the load
- > Easy Case in door water container
- > NFC features: Voice assistant, Smart check-up, Smart cycles
- > Drying level regulation
- > LED display
- > Delay start - 24 hours
- > Digital countdown indicator
- > Control panel lock
- > Safety lock
- > Indicator of door closed
- > Adjustable feet
- > Noise level: 67 dB
- > Drying load: Max. 7 kg
- > Stainless steel drum, plastic tub and glass door
- > Candy 2 year labour, 10 year parts warranty
- > Order qty: 1 pc



Finish	Model No.	Cat. No.
White with chrome trim	BATDH7A1TCE-80	536.98.500



Finish	Model No.	Cat. No.
White with chrome door	BCTDH7A1TE-80	536.98.520



Power supply: 13 Amp power supply required for all washing machines and dryers



Smeg appliances take centre stage in a home, giving any space the unmistakable Smeg personality. With a cool Italian heritage, alongside an inventive originality and timeless elegance, Smeg are able to offer customers tasteful home appliances that make a statement. As one of Smeg's UK distributors to the trade, we are proud to be able to offer the full range of Smeg products to view online at hafele.co.uk



RANGEmaster

Rangemaster – Britain's best loved range cooker brand. They made the world's first range cooker in 1830 on the same site where they continue to design and manufacture all their range cookers, built in products and refrigeration. Today, much has changed at Rangemaster but their core principle of creating, beautiful, functional market leading appliances remains.



VISIT HAFELE.CO.UK TO VIEW THE FULL RANGE

SINKS & TAPS



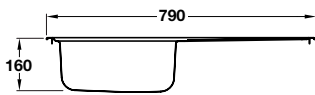
Athena compact inset single bowl sink, 565.85.701 - see page 100 for full details

2021 BM KITCHEN PRODUCTS & APPLIANCES BROCHURE, © Häfele U.K. Ltd 2021. Dimensional data not binding. We reserve the right to alter specifications without notice.

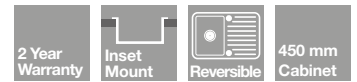
SPARTA INSET MOUNT

Made from high quality stainless steel and with a distinctive design drainer pattern, the Sparta collection of sinks are stain resistant, durable and easy to clean. Available in various sizes including a compact sink for where space is limited.

Sparta single bowl sink and tap set

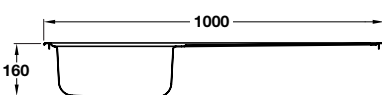


- > Set consists of:
- > 1x **Sink:**
Overall size: 790 x 500 mm
Bowl size: 340 x 400 mm
Cut-out size: 770 x 480 mm
0.5 mm 302, 18/10 grade polished stainless steel
- > Waste kit included
- > 1x **Tap:**
Overall height 150 mm, spout exit height 125 mm, spout exit reach 217 mm
0.5 bar min. operating pressure
Chrome-plated brass
- > Order qty: 1 set

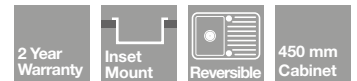


Drainer	Cat. No.
Reversible	565.85.802

Sparta single bowl sink and tap set

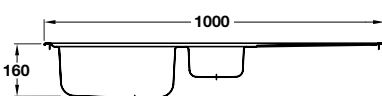


- > Set consists of:
- > 1x **Sink:**
Overall size: 1000 x 500 mm
Bowl size: 340 x 400 mm
Cut-out size: 840 x 480 mm
0.5 mm 302, 18/10 grade polished stainless steel
Waste kit included
- > 1x **Tap:**
Overall height 150 mm, spout exit height 125 mm, spout exit reach 217 mm
0.5 bar min. operating pressure
Chrome-plated brass
- > Order qty: 1 set

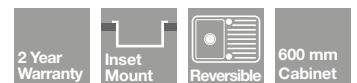


Drainer	Cat. No.
Reversible	565.85.812

Sparta 1.5 bowl sink and tap set



- > Set consists of:
- > 1x **Sink:**
Overall size: 1000 x 500 mm
Main bowl size: 340 x 400 mm,
Second bowl size: 160 x 400 mm
Cut-out size: 840 x 480 mm
0.5 mm 302, 18/10 grade polished stainless steel
Waste kit included
- > 1x **Tap:**
Overall height 150 mm, spout exit height 125 mm, spout exit reach 217 mm
0.5 bar min. operating pressure
Chrome-plated brass
- > Order qty: 1 set



Drainer	Cat. No.
Reversible	565.85.822



Sparta stainless steel sink range also available as standard sink without tap, visit hafele.co.uk for details

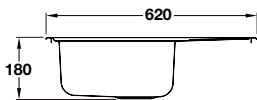
ATHENA INSET MOUNT

These Athena stainless steel sinks are stain resistant, durable and easy to clean. Available in various sizes including a compact sink for where space is limited.

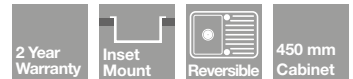


Taps are not included with this sink - see pages **104-105** for further information

Athena single bowl sink

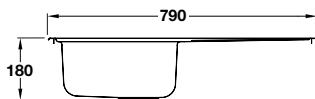


- > Overall size: 620 x 500 mm
- > Main bowl size: 340 x 400 mm
- > Cut-out size: 600 x 480 mm
- > 0.8 mm 302, 18/10 grade polished stainless steel
- > Waste kit included
- > Order qty: 1 pc



Drainer	Cat. No.
Reversible	565.85.701

Athena single bowl sink

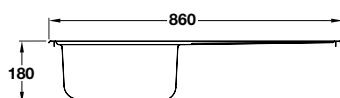


- > Overall size: 790 x 500 mm
- > Main bowl size: 340 x 400 mm
- > Cut-out size: 770 x 480 mm
- > 0.8 mm 302, 18/10 grade polished stainless steel
- > Waste kit included
- > Order qty: 1 pc

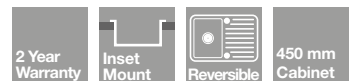


Drainer	Cat. No.
Reversible	565.85.711

Athena single bowl sink

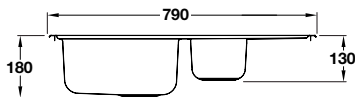


- > Overall size: 860 x 500 mm
- > Main bowl size: 340 x 400 mm
- > Cut-out size: 848 x 488 mm
- > 0.8 mm 302, 18/10 grade polished stainless steel
- > Waste kit included
- > Order qty: 1 pc

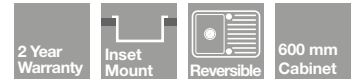


Drainer	Cat. No.
Reversible	565.85.731

Athena 1.5 bowl sink

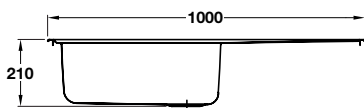


- > Overall size: 790 x 500 mm
- > Main bowl size: 340 x 400 mm, second bowl size: 165 x 290 mm
- > Cut-out size: 770 x 480 mm
- > 0.8 mm 302, 18/10 grade polished stainless steel
- > Waste kit included
- > Order qty: 1 pc

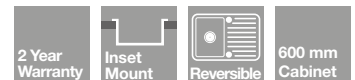


Drainer	Cat. No.
Reversible	565.85.721

Athena single bowl sink

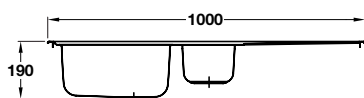


- > Overall size: 1000 x 500 mm
- > Main bowl size: 500 x 400 mm
- > Cut-out size: 980 x 480 mm
- > 0.8 mm 302, 18/10 grade polished stainless steel
- > Waste kit included
- > Order qty: 1 pc



Drainer	Cat. No.
Reversible	565.85.733

Athena 1.5 bowl sink

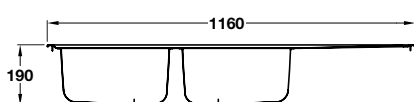


- > Overall size: 1000 x 500 mm
- > Main bowl size: 340 x 400 mm, second bowl size: 165 x 290 mm
- > Cut-out size: 988 x 488 mm
- > 0.8 mm 302, 18/10 grade polished stainless steel
- > Waste kit included
- > Order qty: 1 pc

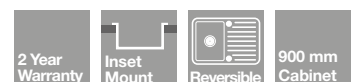


Drainer	Cat. No.
Reversible	565.85.724

Athena double bowl sink



- > Overall size: 1160 x 500 mm
- > Main bowl size: 340 x 400 mm, second bowl size: 340 x 400 mm
- > Cut-out size: 1140 x 480 mm
- > 0.8 mm 302, 18/10 grade polished stainless steel
- > Waste kit included
- > Order qty: 1 pc



Drainer	Cat. No.
Reversible	565.85.723

GROHE INSET MOUNT

GROHE sink and tap sets are available in a range of versatile, stylish designs offering a perfect fit for every home. Sinks are reversible with automatic waste fitting for added comfort and convenience.



GROHE K200 single bowl sink and BauEdge tap set



- > Set consists of:
- > 1x **Sink** - Cat. No. 570.40.060
 GROHE K200 single bowl sink
 Overall size: 860 x 500 mm
 Bowl size: 390 x 400 mm
 Cut-out size: 840 x 480 mm
 0.6 mm 304, 18/8 grade stainless steel
 Radius: R9 mm
 Waste kit included
- > 1x **Tap** - Cat. No. 569.27.270
 GROHE BauEdge single lever mixer tap, polished chrome finish
 Overall height: 332 mm
 Spout exit height: 207 mm
 Spout exit reach: 223 mm
 Operating pressure: Min. 1.0 bar, max. 5.0 bar
 Control valve type: Quarter turn ceramic disc
 Tails included
 Brass
- > Order qty: 1 pc



Cat. No.	
Reversible	570.40.071

GROHE BLUE® PURE FILTER TAP

The innovative GROHE Blue® filters use a three-step filtration process to remove even the smallest particles from tap water, while leaving behind all the important minerals that benefit your health.

GROHE Blue® Pure Eurosmart starter kit, C-spout



- > Includes:
 - Single lever Eurosmart mixer tap with filter function, separate handle for filtered water
 - GROHE Blue® water filter with S-Size filter head
- > For filtered and standard mixed hot/cold water
- > Dual flow spout - two separate waterways to ensure that GROHE Blue® water does not come into contact with unfiltered water or with metal parts after filtering, thus preserving the filtered taste
- > Separate handle for chilled and filtered water
- > GROHE Blue® filters use a three-step filtration process to remove even the smallest particles from tap water, while leaving behind all the important minerals that benefit your health
- > Overall tap height: 384 mm
- > Spout exit height: 258 mm
- > Spout exit reach c/c: 223 mm
- > 2.0 bar min. operating pressure
- > 5.0 bar max. operating pressure
- > Tails included
- > Body material: Brass
- > Order qty: 1 pc

2+1 Year Guarantee

Finish	Cat. No.
Polished chrome	570.77.230

GROHE Blue® Pure BauCurve starter kit, C-spout



- > Includes:
 - Single lever BauCurve mixer tap with filter function, separate handle for filtered water
 - GROHE Blue® water filter with S-Size filter head
- > For filtered and standard mixed hot/cold water
- > Dual flow spout - two separate waterways to ensure that GROHE Blue® water does not come into contact with unfiltered water or with metal parts after filtering, thus preserving the filtered taste
- > Left turn activated handle for filtered water, right hand lever for standard mixed hot and cold water
- > GROHE Blue® filters use a three-step filtration process to remove even the smallest particles from tap water, while leaving behind all the important minerals that benefit your health
- > Overall tap height: 407 mm
- > Spout exit height: 253 mm
- > Spout exit reach c/c: 225 mm
- > 2.0 bar min. operating pressure
- > 5.0 bar max. operating pressure
- > Tails included
- > Body material: Brass
- > Order qty: 1 pc

2+1 Year Guarantee

Finish	Cat. No.
Polished chrome	570.77.240

GROHE RED 2.0 INSTANT HOT WATER TAP

Replace your kettle and get the convenience of kettle-hot water straight from the new GROHE Red Duo mixer tap.

- > GROHE Red 2.0 Duo:
- > Delivers water heated up to 99° instantly. The water is perfect for making tea and coffee, but also filling pots and preparing meals
- > Kettle-hot water function activated via the child-safe touch buttons, while standard hot and cold water is controlled via a slim, forward-rotating lever
- > The high L-shaped spout makes filling pots easy, and it has a swivel range of 150° for further flexibility
- > GROHE SilkMove ensures smooth, precise lever operation
- > Safety is paramount with GROHE Red taps - the mixer features an automatic, illuminated GROHE ChildLock function operated via the touch buttons, and GROHE CoolTouch technology ensures the spout's surface is never too hot to touch



GROHE Red 2.0 Duo kitchen mixer tap and single medium boiler, 3 litres, C-spout



- > 3-in-1: For filtered kettle hot water in addition to standard hot/cold mixed water
- > Max. water temperature inside the boiler: 99°C
- > Only heat as much water as you need saving water, energy and costs
- > Certified safety handle, touch sensitive
- > Tap insulated with GROHE CoolTouch technology
- > Filter system removes heavy metals and organic compounds for fresh filtered kettle hot water
- > Storage heater dims: 336 x 210 mm
- > Storage heater capacity: 3 litres
- > Filter system capacity: 600 litres
- > Overall tap height: 418 mm
- > Spout exit height: 288 mm
- > Spout exit reach c/c: 224 mm
- > 2.0 bar min. operating pressure
- > 5.0 bar max. operating pressure
- > Control valve type: 35 mm ceramic cartridge
- > Tails included
- > Body material: brass (polished chrome) or zinc alloy (brushed super steel finish)
- > Order qty: 1 pc

2+1 Year Guarantee

WRAS approved



Order compression fitting adaptor 569.25.999 separately, visit hafele.co.uk for details

Finish	Cat. No.
Polished chrome	569.24.220
Brushed super steel	569.24.020

GROHE BauEdge contemporary single lever mixer tap



- > Overall height: 332 mm
- > Spout exit height: 207 mm
- > Spout exit reach: 332 mm
- > 1.0 bar min. operating pressure
- > 5.0 bar max. operating pressure
- > Control valve type: Quarter turn ceramic disc
- > Tails included
- > Body material: Brass
- > Order qty: 1 pc

5 Year Guarantee

Finish	Cat. No.
Polished chrome	569.25.220

GROHE Eurosmart contemporary single lever mixer tap, low spout



- > Overall height: 182-218 mm
- > Spout exit height: 226 mm
- > Spout exit reach: 147 mm
- > 1.0 bar min. operating pressure
- > 5.0 bar max. operating pressure
- > Control valve type: Quarter turn ceramic disc
- > Tails included
- > Body material: Brass
- > Order qty: 1 pc

5 Year Guarantee

WRAS approved



GROHE Eurosmart tap is also available in a version with pull out spray feature, shown below

Finish	Cat. No.
Polished chrome	569.27.250

GROHE Eurosmart single lever mixer tap with pull out spray, low spout



- > Overall height: 184-224 mm
- > Spout exit height: 139 mm
- > Spout exit reach: 226 mm
- > 1.0 bar min. operating pressure
- > 5.0 bar max. operating pressure
- > Control valve type: Quarter turn ceramic disc
- > Tails included
- > Body material: Brass
- > Order qty: 1 pc

Pull Out Spray Feature

5 Year Guarantee

WRAS approved



GROHE Eurosmart tap is also available in standard version without pull out spray, shown above

Finish	Cat. No.
Polished chrome	569.27.260

WORKTOPS



APOLLO® TIMBER

Finger jointed in the length, and edge glued to provide stability and strength. A great selection of species, each individually shrink wrapped with instructions included.

- > 7 species
- > 10 finishes
- > 27 mm and 40 mm worktop thicknesses
- > Hardwood worktops are constructed from 40 mm wide, finger jointed pieces of kiln dried timber
- > Full stave worktops are available in 40 mm prime oak only
- > Raw sanded to 150 grit and ready for finishing
- > The Ultra Work surface sealant is required to treat the wood before use enhancing the natural grain of the wood and giving it a water resistant seal - Included in the Apollo Timber installation and care set shown on page 109
- > Fabricated hardwood worktops have a silky smooth finish and are virtually maintenance free
- > The colour of the wood will change over time, giving a beautiful and matured look
- > 10 Year limited manufacturer's warranty
- > Prices include delivery to a UK mainland trade address



Prime beech



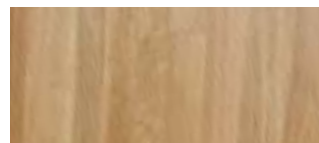
Teak



Rustic beech



Sapele



Prime oak



Iroko



Rustic oak



Walnut

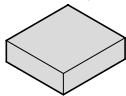


Maple



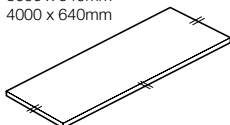
Apollo® Timber worktops and upstands

Square edge



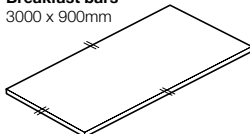
Worktops

2000 x 640mm
3000 x 640mm
4000 x 640mm



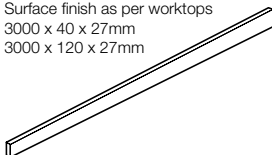
Breakfast bars

3000 x 900mm



Upstands

With profiled top edge
Surface finish as per worktops
3000 x 40 x 27mm
3000 x 120 x 27mm



|| = Factory finished edges

Measuring up:

- > Apollo® Timber can expand as much as 1 mm/mtr. Always allow a gap of at least 3 mm if for example, worktops are captive between walls
- > Tolerance is ± 2 mm
- > Splashbacks and upstands over 100 mm high must have a minimum gap from the face to the rear of the hob - electric 50 mm, gas 150 mm
- > Upstands should be fixed to the wall and NOT to the worktop
- > Allow a 3 mm gap between the work surface and upstand, the only connection between upstand and worktops should be silicone sealant, allowing the natural movement of your worktop
- > Allow a minimum 50 mm from the cut-out to the front edge
- > Wherever possible, joints in worktops should fall on a carcass end panel, giving added support to a joint
- > Joints should be a minimum of 100 mm from the sink or 120 mm from a hob cut-out
- > Allow a minimum of 120 mm between heated cut-outs
- > Stainless steel sink cut outs to manufacturer's recommendations
- > Standard overhang is 35 mm from the carcass front, (not the door)
- > Overhangs in excess of 300 mm should be supported and the worktop should be supported every 600 mm

Hot stuff:

- > Heat producing appliances that sit beneath the worktop, must have an aluminium foil membrane placed on the underside of worktop, directly above the appliance
- > Ensure that pans used on gas hobs are of the correct size
- > Hob flanges must sit on aluminium thermal insulation around the cut-out, to avoid conducting excess heat and causing cracks in the worktop
- > Flush mounted, recessed hobs (including induction hobs) are covered under warranty

Installation:

- > Plastering or tiling should be completed after installation
- > Regular use of the care and maintenance kit should ensure worktops stay in good condition
- > Installation is relatively easy, for either a competent DIY enthusiast or recognised kitchen installer to carry out
- > No specialist tooling required. Can be cut using normal woodworking routers and blades
- > Plan the worktop layout to ensure joints don't fall on or within 100mm of cut-outs
- > Timber work surfaces must not be installed in unoccupied premises
- > If wood worktops are to be stored prior to installation, they should always be stored at room temperature away from all sources of heat and moisture, on a sound level surface horizontally with a minimum of four timber battens equally spaced in between each worktop and on the floor
- > Never store in a garage or an unfinished building and always install within 7 days of delivery
- > Seal regularly in the first couple of weeks after installation to avoid the worktops drying out
- > To test if a work surface requires further sealing, apply a drop of water to the surface, if the water pools the sealing requires further attention. If the water runs away, no more sealing is require
- > All fabricated worktops are treated with a revolutionary new oil, which both protects and seals, prior to it being shrink wrapped before leaving our factory. This work surface sealant is also included in our care and maintenance kits and should be used to protect and seal wood worktop blanks
- > Easy to follow installation video is available to download at hafele.co.uk



10 Year
Warranty

Apollo® Timber worktops and upstands



Item	Prime beech	Rustic beech	Prime oak	Rustic oak	Maple
Worktop 2000 x 640 x 40 mm	564.11.032	564.11.022	564.10.040	564.11.052	564.11.012
Worktop 3000 x 640 x 27 mm	564.10.031	564.10.021	564.11.042	564.10.051	564.10.011
Worktop 3000 x 640 x 40 mm	564.10.032	564.10.022	564.10.042	564.10.052	564.10.012
Worktop 4000 x 640 x 27 mm	564.10.035	564.10.025	564.10.045	564.10.055	564.10.015
Worktop 4000 x 640 x 40 mm	564.10.036	564.10.026	564.10.046	564.10.056	564.10.016
Full stave worktop 1900 x 640 x 40 mm	-	-	564.11.340	-	-
Full stave worktop 1900 x 900 x 40 mm	-	-	564.11.341	-	-
Breakfast bar 3000 x 900 x 40 mm	564.10.034	564.10.024	564.10.044	564.10.054	564.10.012
Breakfast bar 4000 x 900 x 40 mm	-	-	-	-	-
Upstand 3000 x 40(H) x 27 mm	564.13.833	564.13.823	564.13.843	564.13.853	564.13.813
Upstand 3000 x 120(H) x 27 mm	564.13.835	564.13.825	564.13.845	564.13.855	564.13.815



Item	Teak	Sepele	Iroko	Walnut
Worktop 2000 x 640 x 40 mm	564.11.322	564.11.312	564.11.002	564.11.072
Worktop 3000 x 640 x 27 mm	-	-	564.10.001	564.10.071
Worktop 3000 x 640 x 40 mm	564.11.323	564.11.313	564.10.002	564.10.072
Worktop 4000 x 640 x 27 mm	-	-	564.10.005	564.10.075
Worktop 4000 x 640 x 40 mm	564.11.325	564.11.315	564.10.006	564.10.076
Breakfast bar 3000 x 900 x 40 mm	564.11.324	564.11.314	564.10.004	564.10.074
Breakfast bar 4000 x 900 x 40 mm	564.11.326	564.11.316	-	-
Upstand 3000 x 40(H) x 27 mm	-	-	564.13.893	564.13.883
Upstand 3000 x 120(H) x 27 mm	-	-	564.13.895	564.13.885

YOU ALSO NEED:



WOOD CARE OILS
Visit hafele.co.uk for details



CARE KIT
Shown below

OPTIONAL ACCESSORIES
Visit hafele.co.uk for details

Apollo® Timber installation and care set

> Set includes:

1x Installation guide, 1x Care and maintenance guide, 1x Pair of disposable gloves, 2x Lint free cloths, 1x Sanding block, 4x Wooden biscuits, 6x Butterfly bolts, 1x Fixings pack (24x brackets, 96x screws and washers), 1x 290 ml tube of silicone EU3, 1x 375 ml tin of Ultra work surface sealant, 1x 150 ml spray can of Ultra Fresh mousse, 1x 180 grit sandpaper, 1x 240 grit sandpaper, 1x 500 grit sandpaper, 1x White abrasive disc pad, 1x Roll aluminium tape, 2x Aluminium foil sheets

> Order qty: 1 set

	Cat. No.
Timber installation and care set	564.13.998

> Caring for wood:

Following installation, use Ultra Work surface Sealant to prevent the wood from drying out and warping

> Ultra Work surface Sealant is a clear, satin matt finish preserver made from natural vegetable oils and waxes. Its micro porous finish will not crack, flake, peel or blister. Remember: Always wipe off all excess sealant before allowing to dry

Further coat(s) of sealant should be applied in the first few weeks following installation to prevent drying out as the work surface acclimatises to its new environment

If your work surface dries out apply a coat of Ultra Work surface Sealant. Ultra Fresh Mousse is specially formulated to freshen up and clean your work surface to provide a fresh, protective layer on the surface. Its natural oils and waxes will restore the surface finish; apply at 2-3 month intervals or to seal minor repairs

> Ultra Fresh Mousse is specially formulated to freshen up and clean your work surface to provide a fresh, protective layer on the surface. Its natural oils and waxes will restore the surface finish; apply at 2-3 month intervals or to seal minor repairs

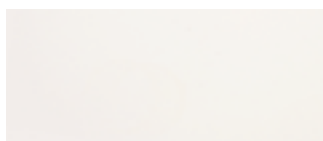
MINERVA® SOLID SURFACE

Manufactured to a full 25 mm thickness with colour throughout, Minerva offers the flexibility to meet all your design needs without incurring the cost of specialist installation teams.

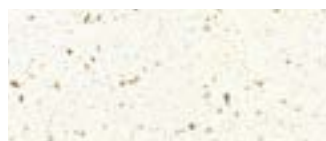
- > 19 standard colours
- > 25 mm solid surface
- > A jointing kit must be ordered separately for each required joint
- > Dark, heavily pigmented colours will show scratches, dust and ordinary wear and tear more easily than light or textured colours and should not be used in high traffic areas. (*These colours require a disclaimer form to be completed prior to worktops being manufactured)
- > Veined decors which reflect the natural appeal of stone. Whilst each joint is seamless and hygienic, there may be a visual difference when two work surfaces are joined as the veining on each work surface is unique
- > FIRA gold award for product excellence
- > 10 Year limited manufacturer's warranty (warranty card included with worktops or online registration form must be completed and returned to the supplier to validate warranty)
- > Prices include delivery to a UK mainland trade address



Desert rock finish with integrated sink



White (Price group 1)



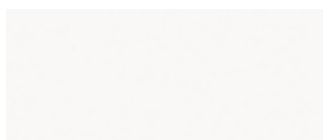
Copper fleck (Price group 3)



Amazonia brown (Price group 2)



Concrete Haze (Price group 3)



Sparkling white (Price group 2)



Ice blue (Price group 2)



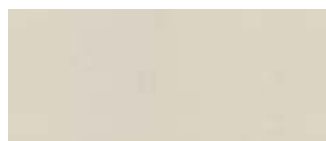
Peak stone (Price group 2)



Travertine Haze (Price group 3)



+Carrara white (Price group 3)



Fossil (Price group 2)



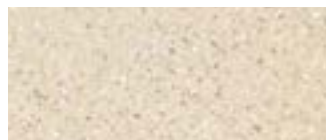
*Nimbus grey (Price group 2)



Silver Haze (Price group 3)



Ice crystal (Price group 2)



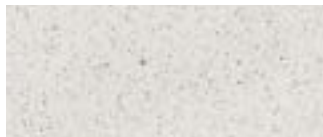
Caramel crunch (Price group 2)



*Black granite (Price group 2)



+Calcutta White (Price group 4)



Grey crystal (Price group 2)



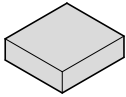
+Desert rock (Price group 3)

*Dark heavily pigmented colours will show scratches, dust and ordinary wear and tear more easily than light or textured colours and should not be used in high traffic areas
 + A veined decor which reflects the natural appeal of stone. Whilst each joint is seamless and hygienic, there may be a visual difference when two work surfaces are joined as the veining on each work surface is unique

2021 BM KITCHEN PRODUCTS & APPLIANCES BROCHURE, © Häfele U.K. Ltd 2021. Dimensional data not binding. We reserve the right to alter specifications without notice.

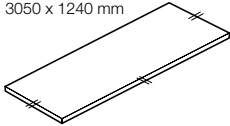
Minerva® solid surface worktops, splashbacks, upstands and sinks

Square edge



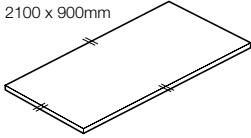
Worktops

1500 x 600mm
1500 x 650mm
3050 x 600mm
3050 x 650 mm
3050 x 940 mm
3050 x 1240 mm



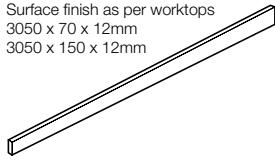
Breakfast bars

2100 x 900mm



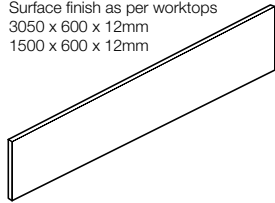
Upstands

Solid acrylic sheet with profiled top edge
Surface finish as per worktops
3050 x 70 x 12mm
3050 x 150 x 12mm



Splashbacks

Solid acrylic sheet with profiled top edge
Surface finish as per worktops
3050 x 600 x 12mm
1500 x 600 x 12mm



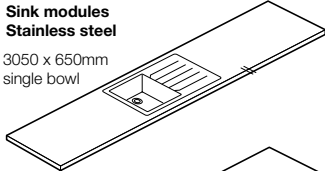
Hob splashbacks

Solid acrylic sheet with all edges square cut
Surface finish as per worktops
900 x 750 x 12mm

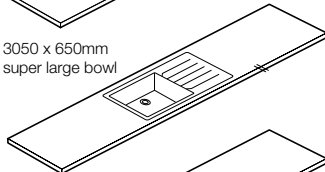


Sink modules Stainless steel

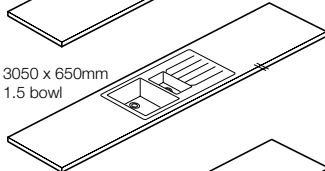
3050 x 650mm
single bowl



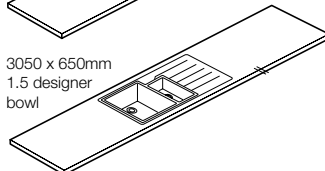
3050 x 650mm
super large bowl



3050 x 650mm
1.5 bowl

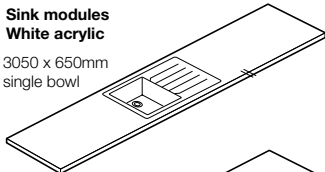


3050 x 650mm
1.5 designer
bowl

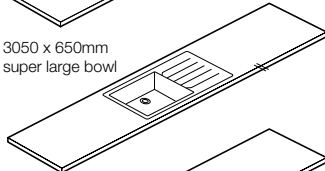


Sink modules White acrylic

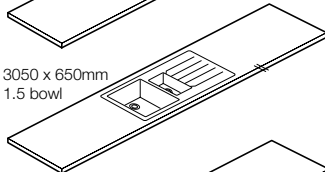
3050 x 650mm
single bowl



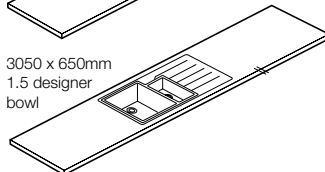
3050 x 650mm
super large bowl



3050 x 650mm
1.5 bowl



3050 x 650mm
1.5 designer
bowl



|| = Factory finished edges

Illustrations show left hand bowl sinks

- > Minerva has been developed to be used in the domestic environment, particularly the kitchen. Although no 'special' maintenance is needed we recommend the following is adhered to, as prevention is always better than cure

Routine cleaning:

- > Specialist cleaning regimes are not required – most dirt and light residue will easily wipe away with a damp cloth and soapy water. The work surface should then be rinsed with clean water and wiped dry
- > Persistent marks can be removed by using a mild-abrasive cleaner, but harsh scouring powders should be avoided. If in doubt, consult our care and maintenance guide

Heat:

- > Minerva's surfaces will withstand heat better than many alternative surface materials
- > All hot pots, pans and other heat generating devices should always be placed upon a trivet or worktop protector rods, to prevent extreme heat having prolonged and direct contact with the surface
- > Boiling water and cooking splashes do not harm the surface

Staining:

- > Unlike marble and granite, Minerva will resist most household chemicals including alcohol and cosmetics
- > Some chemicals and strong dyes can cause damage and discolouration. If spillage occurs wipe off immediately and rinse area thoroughly

Minor scratching:

- > Kitchen utensils and crockery (particularly the unglazed bases) can sometimes cause scratches that will be particularly evident on darker colours
- > The surface can be damaged by scratching or cutting with knives, so the use of a cutting board is essential
- > Any minor scratches can easily be removed using a grey abrasive pad and other items from the care kit, please refer to the care and maintenance guide

Installation:

- > Installation is relatively easy, for either a competent DIY enthusiast or recognised kitchen installer to carry out
- > No specialist tooling required. Can be cut using normal woodworking routers and blades

Minerva care kit:

- > To help maintain your Minerva work surface, a care kit is available. This kit contains all that you need to make minor repairs to the surface and a special cleaner that helps to maintain, protect and build up a lustre particularly on darker colours
- > Please do not use any cleaner other than that included in the Minerva care kit, or recommended in the manufacturers instructions, on the work surface as this will affect the appearance and may invalidate your warranty



10 Year
Warranty

Minerva® solid surface worktops, upstands and splashbacks



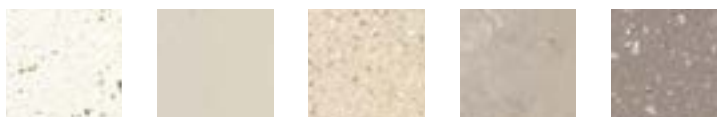
Co-ordinating worktops with integrated sinks are shown on page **114**



Item	White	Sparkling white	Carrara white	Ice crystal	Grey crystal
Worktop 1500 x 600 x 25 mm	562.69.761	562.69.830	562.69.732	562.69.749	562.69.809
Worktop 1500 x 650 x 25 mm	562.70.743	562.69.831	562.70.333	562.70.788	562.69.810
Worktop 3050 x 600 x 25 mm	562.69.762	562.69.833	562.69.733	562.69.750	562.69.812
Worktop 3050 x 650 x 25 mm	562.70.742	562.69.834	562.70.332	562.70.787	562.69.813
Breakfast bar 2100 x 900 x 25 mm	562.70.744	562.69.832	562.70.334	562.70.789	562.69.811
Upstand 3050 x 150(H) x 12 mm	562.71.563	562.71.622	562.71.522	562.71.573	562.71.620
Upstand 3050 x 70(H) x 12 mm	562.71.562	562.71.623	562.71.521	562.71.572	562.71.621
Full splashback 3050 x 600(H) x 12 mm	562.71.106	562.71.179	562.71.030	562.71.116	562.71.176
Half splashback 1500 x 600(H) x 12 mm	562.71.107	562.71.178	562.71.031	562.71.117	562.69.808
Hob splashback 900 x 750(H) x 12 mm	562.71.170	562.71.180	562.71.163	562.71.167	562.71.177
Adhesive, 75 ml	562.71.938	562.71.942	562.71.931	562.71.935	562.71.941
Jointing kit	562.71.970	562.71.887	562.71.997	562.71.975	562.71.886



Co-ordinating worktops with integrated sinks are shown on page **115**



Item	Copper fleck	Fossil	Caramel crunch	Desert rock	Amazonia brown
Worktop 1500 x 600 x 25 mm	562.69.787	562.69.745	562.69.766	562.69.741	562.69.720
Worktop 1500 x 650 x 25 mm	562.69.788	562.70.752	562.69.767	562.70.972	562.69.958
Worktop 3050 x 600 x 25 mm	562.69.790	562.69.746	562.69.769	562.69.742	562.69.721
Worktop 3050 x 650 x 25 mm	562.69.791	562.70.751	562.69.770	562.70.971	562.70.957
Breakfast bar 2100 x 900 x 25 mm	562.69.789	562.70.753	562.69.768	562.70.973	562.70.959
Upstand 3050 x 150(H) x 12 mm	562.71.618	562.71.565	562.71.616	562.71.594	562.71.590
Upstand 3050 x 70(H) x 12 mm	562.71.619	562.71.564	562.71.617	562.71.593	562.71.589
Full splashback 3050 x 600(H) x 12 mm	562.71.174	562.71.108	562.71.171	562.71.147	562.71.143
Half splashback 1500 x 600(H) x 12 mm	562.71.173	562.71.109	562.69.765	562.71.148	562.71.144
Hob splashback 900 x 750(H) x 12 mm	562.71.175	562.71.166	562.71.172	562.71.165	562.71.161
Adhesive, 75 ml	562.71.940	562.71.934	562.71.939	562.71.933	562.71.929
Jointing kit	562.71.885	562.71.971	562.71.884	562.71.894	562.71.892



Co-ordinating worktops with integrated sinks are shown on page **115**



Item	Peak stone	*Nimbus grey	*Black granite	Ice blue
Worktop 1500 x 600 x 25 mm	562.69.757	562.69.753	562.69.724	562.69.874
Worktop 1500 x 650 x 25 mm	562.70.944	562.70.770	562.70.761	562.69.875
Worktop 3050 x 600 x 25 mm	562.69.758	562.69.754	562.69.725	562.69.876
Worktop 3050 x 650 x 25 mm	562.70.943	562.70.769	562.70.760	562.69.877
Breakfast bar 2100 x 900 x 25 mm	562.70.945	562.70.771	562.70.762	562.69.878
Upstand 3050 x 150(H) x 12 mm	562.71.586	562.71.569	562.71.567	562.71.633
Upstand 3050 x 70(H) x 12 mm	562.71.585	562.71.568	562.71.566	562.71.634
Full splashback 3050 x 600(H) x 12 mm	562.71.139	562.71.112	562.71.110	562.71.187
Half splashback 1500 x 600(H) x 12 mm	562.71.140	562.71.113	562.71.111	562.71.188
Hob splashback 900 x 750(H) x 12 mm	562.71.169	562.71.168	562.71.162	562.71.189
Adhesive, 75 ml	562.71.937	562.71.936	562.71.930	562.71.943
Jointing kit	562.71.890	562.71.973	562.71.972	562.71.888

YOU ALSO NEED:



JOINTING KIT & ADHESIVE
Shown above



CARE KIT
Page 115

OPTIONAL ACCESSORIES
Visit hafele.co.uk for details



Concrete haze finish



Travertine haze finish



Calcutta white worktop with integrated stainless steel sink, co-ordinating splashback and island



Silver haze finish

Minerva® solid surface worktops, upstands and splashbacks



Co-ordinating worktops with integrated sinks are shown on page **116**



Item	Concrete haze	Travertine haze	Silver haze	Calcutta white
Worktop 1500 x 600 x 25 mm	562.67.000	562.67.054	562.67.080	562.67.026
Worktop 1500 x 650 x 25 mm	562.67.001	562.67.055	562.67.081	562.67.027
Worktop 3050 x 600 x 25 mm	562.67.002	562.67.056	562.67.082	562.67.028
Worktop 3050 x 650 x 25 mm	562.67.003	562.67.057	562.67.083	562.67.029
Worktop 3050 x 940 x 25 mm	-	-	-	562.67.052
Worktop 3050 x 1240 x 25 mm	-	-	-	562.67.053
Breakfast bar 2100 x 900 x 25 mm	562.67.004	562.67.058	562.67.084	562.67.030
Upstand 3050 x 150(H) x 12 mm	562.67.005	562.67.059	562.67.085	562.67.031
Upstand 3050 x 70(H) x 12 mm	562.67.006	562.67.060	562.67.086	562.67.032
Full splashback 3050 x 600(H) x 12 mm	562.67.007	562.67.061	562.67.087	562.67.033
Half splashback 1500 x 600(H) x 12 mm	562.67.008	562.67.062	562.67.088	562.67.034
Hob splashback 900 x 750(H) x 12 mm	562.67.009	562.67.063	562.67.089	562.67.035
Adhesive, 75 ml	562.67.990	562.67.992	562.67.993	562.67.991
Jointing kit	562.67.980	562.67.982	562.67.983	562.67.981

YOU ALSO NEED:



JOINTING KIT & ADHESIVE
Shown above



CARE KIT
Page 115

OPTIONAL ACCESSORIES
Visit hafele.co.uk for details



Carrara white worktop with integrated white acrylic sink, co-ordinating upstand and splashback



Copper fleck finish

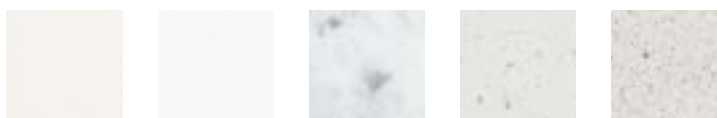


Ice blue finish

Minerva® solid surface worktops with integrated sinks



Co-ordinating worktops, splashbacks and upstands are shown on page 112



Item	White	Sparkling white	Carrara white	Ice crystal	Grey crystal
Worktop with integrated stainless steel sink					
3050 x 650 x 25 mm, left hand single bowl sink	562.69.668	562.69.843	562.69.598	562.69.638	562.69.822
3050 x 650 x 25 mm, right hand single bowl sink	562.69.669	562.69.844	562.69.599	562.69.639	562.69.823
3050 x 650 x 25 mm, left hand super large bowl sink	562.69.670	562.69.845	562.69.600	562.69.640	562.69.824
3050 x 650 x 25 mm, right hand super large bowl sink	562.69.671	562.69.846	562.69.601	562.69.641	562.69.825
3050 x 650 x 25 mm, 1.5 left hand bowl sink	562.69.672	562.69.841	562.69.602	562.69.642	562.69.820
3050 x 650 x 25 mm, 1.5 right hand bowl sink	562.69.673	562.69.842	562.69.603	562.69.643	562.69.821
3050 x 650 x 25 mm, 1.5 left hand designer bowl sink	562.69.674	562.69.839	562.69.604	562.69.644	562.69.818
3050 x 650 x 25 mm, 1.5 right hand designer bowl sink	562.69.675	562.69.840	562.69.605	562.69.645	562.69.819
Worktop with integrated acrylic sink					
3050 x 650 x 25 mm, left hand single bowl sink	562.70.745	562.69.835	562.70.335	562.70.790	562.69.814
3050 x 650 x 25 mm, right hand single bowl sink	562.70.746	562.69.836	562.70.336	562.70.791	562.69.815
3050 x 650 x 25 mm, left hand super large bowl sink	562.69.666	562.69.849	562.69.596	562.69.636	562.69.828
3050 x 650 x 25 mm, right hand super large bowl sink	562.69.667	562.69.850	562.69.597	562.69.637	562.69.829
3050 x 650 x 25 mm, 1.5 left hand bowl sink	562.70.747	562.69.837	562.70.337	562.70.792	562.69.816
3050 x 650 x 25 mm, 1.5 right hand bowl sink	562.70.748	562.69.838	562.70.338	562.70.793	562.69.817
3050 x 650 x 25 mm, 1.5 designer left hand bowl sink	562.69.763	562.69.847	562.69.734	562.69.751	562.69.826
3050 x 650 x 25 mm, 1.5 designer right hand bowl sink	562.69.764	562.69.848	562.69.735	562.69.752	562.69.827

YOU ALSO NEED:



JOINTING KIT & ADHESIVE
Page 112

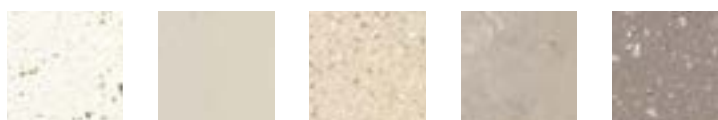


CARE KIT
Page 115

OPTIONAL ACCESSORIES
Visit hafele.co.uk for details



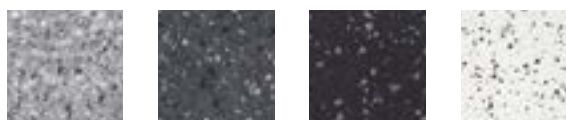
Co-ordinating worktops, splashbacks and upstands are shown on page **112**



Item	Copper fleck	Fossil	Caramel crunch	Desert rock	Amazonia brown
Worktop with integrated stainless steel sink					
3050 x 650 x 25 mm, left hand single bowl sink	562.69.800	562.69.628	562.69.779	562.69.618	562.69.578
3050 x 650 x 25 mm, right hand single bowl sink	562.69.801	562.69.629	562.69.780	562.69.619	562.69.579
3050 x 650 x 25 mm, left hand super large bowl sink	562.69.802	562.69.630	562.69.781	562.69.620	562.69.580
3050 x 650 x 25 mm, right hand super large bowl sink	562.69.803	562.69.631	562.69.782	562.69.621	562.69.581
3050 x 650 x 25 mm, 1.5 left hand bowl sink	562.69.798	562.69.632	562.69.777	562.69.622	562.69.582
3050 x 650 x 25 mm, 1.5 right hand bowl sink	562.69.799	562.69.633	562.69.778	562.69.623	562.69.583
3050 x 650 x 25 mm, 1.5 left hand designer bowl sink	562.69.796	562.69.634	562.69.775	562.69.624	562.69.584
3050 x 650 x 25 mm, 1.5 right hand designer bowl sink	562.69.797	562.69.635	562.69.776	562.69.625	562.69.585
Worktop with integrated acrylic sink					
3050 x 650 x 25 mm, left hand single bowl sink	562.69.792	562.70.754	562.69.771	562.70.974	562.70.960
3050 x 650 x 25 mm, right hand single bowl sink	562.69.793	562.70.755	562.69.772	562.70.975	562.70.961
3050 x 650 x 25 mm, left hand super large bowl sink	562.69.806	562.69.626	562.69.785	562.69.616	562.69.576
3050 x 650 x 25 mm, right hand super large bowl sink	562.69.807	562.69.627	562.69.786	562.69.617	562.69.577
3050 x 650 x 25 mm, 1.5 left hand bowl sink	562.69.794	562.70.756	562.69.773	562.70.976	562.70.962
3050 x 650 x 25 mm, 1.5 right hand bowl sink	562.69.795	562.70.757	562.69.774	562.70.977	562.70.963
3050 x 650 x 25 mm, 1.5 designer left hand bowl sink	562.69.804	562.69.747	562.69.783	562.69.743	562.69.722
3050 x 650 x 25 mm, 1.5 designer right hand bowl sink	562.69.805	562.69.748	562.69.784	562.69.744	562.69.723



Co-ordinating worktops, splashbacks and upstands are shown on page **112**



Item	Peak stone	*Nimbus grey	*Black granite	Ice blue
Worktop with integrated stainless steel sink				
3050 x 650 x 25 mm, left hand single bowl sink	562.69.658	562.69.648	562.69.588	562.69.879
3050 x 650 x 25 mm, right hand single bowl sink	562.69.659	562.69.649	562.69.589	562.69.880
3050 x 650 x 25 mm, left hand super large bowl sink	562.69.660	562.69.650	562.69.590	562.69.881
3050 x 650 x 25 mm, right hand super large bowl sink	562.69.661	562.69.651	562.69.591	562.69.882
3050 x 650 x 25 mm, 1.5 left hand bowl sink	562.69.662	562.69.652	562.69.592	562.69.883
3050 x 650 x 25 mm, 1.5 right hand bowl sink	562.69.663	562.69.653	562.69.593	562.69.884
3050 x 650 x 25 mm, 1.5 left hand designer bowl sink	562.69.664	562.69.654	562.69.594	562.69.885
3050 x 650 x 25 mm, 1.5 right hand designer bowl sink	562.69.665	562.69.655	562.69.595	562.69.886
Worktop with integrated acrylic sink				
3050 x 650 x 25 mm, left hand single bowl sink	562.70.946	562.70.772	562.70.763	562.69.891
3050 x 650 x 25 mm, right hand single bowl sink	562.70.947	562.70.773	562.70.764	562.69.892
3050 x 650 x 25 mm, left hand super large bowl sink	562.69.656	562.69.646	562.69.586	562.69.887
3050 x 650 x 25 mm, right hand super large bowl sink	562.69.657	562.69.647	562.69.587	562.69.888
3050 x 650 x 25 mm, 1.5 left hand bowl sink	562.70.948	562.70.774	562.70.765	562.69.893
3050 x 650 x 25 mm, 1.5 right hand bowl sink	562.70.949	562.70.775	562.70.766	562.69.894
3050 x 650 x 25 mm, 1.5 designer left hand bowl sink	562.69.759	562.69.755	562.69.726	562.69.889
3050 x 650 x 25 mm, 1.5 designer right hand bowl sink	562.69.760	562.69.756	562.69.727	562.69.890

YOU ALSO NEED:



JOINTING KIT & ADHESIVE
Page 112



CARE KIT
Shown below

OPTIONAL ACCESSORIES
Visit hafele.co.uk for details

Minerva® care and maintenance set

- > Set includes:
 - 1x 414 ml Countertop cleaner, 1x Ergonomic foam sanding block, 2x Sanding discs, 1x Microfibre cleaning cloth, 1x Abrasive pad, 1x Instructions
- > Order qty: 1 set

	Cat. No.
Care and maintenance set	562.71.988

Minerva® solid surface worktops with integrated sinks



Co-ordinating worktops, splashbacks and upstands are shown on page 113



Item	Concrete haze	Travertine haze	Silver haze	Calcutta white
Worktop with integrated stainless steel sink				
3050 x 650 x 25 mm, left hand single bowl sink	562.67.010	562.67.064	562.67.090	562.67.036
3050 x 650 x 25 mm, right hand single bowl sink	562.67.011	562.67.065	562.67.091	562.67.037
3050 x 650 x 25 mm, left hand super large bowl sink	562.67.012	562.67.066	562.67.092	562.67.038
3050 x 650 x 25 mm, right hand super large bowl sink	562.67.013	562.67.067	562.67.093	562.67.039
3050 x 650 x 25 mm, 1.5 left hand bowl sink	562.67.014	562.67.068	562.67.094	562.67.040
3050 x 650 x 25 mm, 1.5 right hand bowl sink	562.67.015	562.67.069	562.67.095	562.67.041
3050 x 650 x 25 mm, 1.5 left hand designer bowl sink	562.67.016	562.67.070	562.67.096	562.67.042
3050 x 650 x 25 mm, 1.5 right hand designer bowl sink	562.67.017	562.67.071	562.67.097	562.67.043
Worktop with integrated acrylic sink				
3050 x 650 x 25 mm, left hand single bowl sink	562.67.018	562.67.072	562.67.098	562.67.044
3050 x 650 x 25 mm, right hand single bowl sink	562.67.019	562.67.073	562.67.099	562.67.045
3050 x 650 x 25 mm, left hand super large bowl sink	562.67.020	562.67.074	562.67.100	562.67.046
3050 x 650 x 25 mm, right hand super large bowl sink	562.67.021	562.67.075	562.67.101	562.67.047
3050 x 650 x 25 mm, 1.5 left hand bowl sink	562.67.022	562.67.076	562.67.102	562.67.048
3050 x 650 x 25 mm, 1.5 right hand bowl sink	562.67.023	562.67.077	562.67.103	562.67.049
3050 x 650 x 25 mm, 1.5 designer left hand bowl sink	562.67.024	562.67.078	562.67.104	562.67.050
3050 x 650 x 25 mm, 1.5 designer right hand bowl sink	562.67.025	562.67.079	562.67.105	562.67.051

YOU ALSO NEED:



JOINTING KIT & ADHESIVE
Page 113



CARE KIT
Page 115

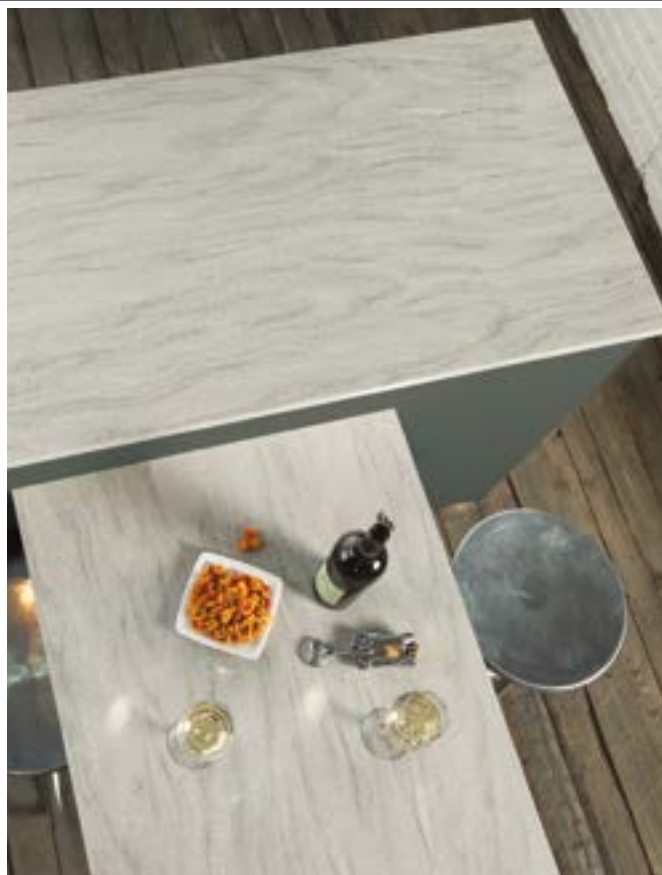
OPTIONAL ACCESSORIES
Visit hafele.co.uk for details



Travertine haze worktop with integrated stainless steel sink



Silver haze worktop with co-ordinating splashback



Concrete haze worktops

2021 BM KITCHEN PRODUCTS & APPLIANCES BROCHURE, © Häfele U.K. Ltd 2021. Dimensional data not binding. We reserve the right to alter specifications without notice.

MY HÄFELE ONLINE ACCOUNT MANAGEMENT

The My Häfele portal has been created to allow our customers to easily and quickly manage their account, enabling them to work more efficiently by giving them easy access to their account information anywhere, anytime.

HOW TO ACCESS *my* HÄFELE

1

LOGIN TO THE WEBSITE

2

SELECT 'MY ACCOUNT'

3

CLICK 'MY HÄFELE' - IT'S THAT EASY



HOW IS IT DIFFERENT TO THE WEBSITE 'MY ACCOUNT' SECTION?

Whilst the website's My Account section gives our customers the ability to manage Wish Lists, Co-Users and Shipping Addresses, the new My Häfele portal offers the next level of convenience by allowing our customers to:

- Keep track of orders
- View account balance
- Manage returns
- Check pricing and availability
- Keep track of invoices
- View order history

And that's just to start with – keep an eye out for new features.

Start using My Häfele:

Click on the icon to visit hafele.co.uk/myhafele to start making your life easier.

HÄFELE

06/21 ISSUE 2 - 2021 KITCHEN PRODUCTS & APPLIANCES BROCHURE

hafele.co.uk

© Häfele UK 2021

No part of this catalogue may be reproduced,
photocopied or stored in any data retrieval
system without written permission.