

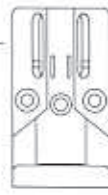
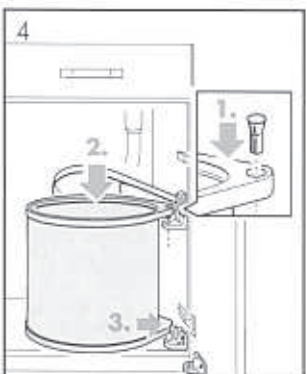
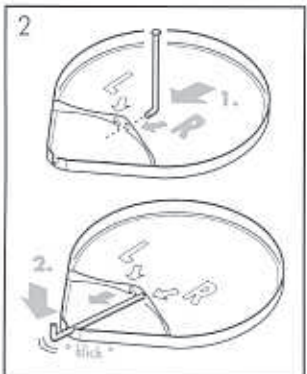
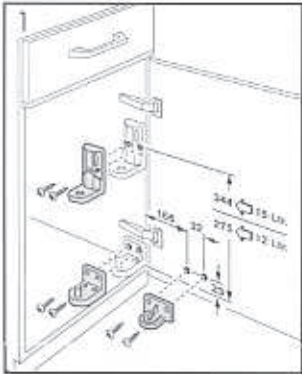


Punkt für Punkt  
praktischer

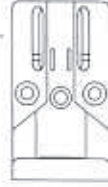
# MONO AS 3512/3515

Montageanleitung  
Mounting Instruction  
Instructions de montage  
Montageinstructies  
Istruzioni inerenti il montaggio  
Instrucciones de Montaje

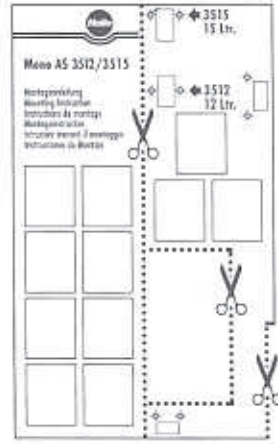
Rechte Seite · Right hand side · Côté droit · Rechter Kant  
Lato destro · Lado derecho



← **3515**  
**15 Ltr.**



← **3512**  
**12 Ltr.**



Nobi

