

RUSTIC 80

FOR TIMBER DOORS WEIGHING UP TO 80KG EACH

APPLICATIONS

- ▶ Rustic 80 sliding door hardware offers a traditional look to sliding wooden doors weighing up to 80kg
- ▶ Exposed steel straps fasten down the front of the door to support the rustic finish whilst the beautifully crafted hangers run smoothly along a flat bar track
- ▶ Robust black powder coat provides a durable finish
- ▶ Nylon bearinged wheels provide smooth and silent running
- ▶ Easy to install
- ▶ Offered in kits with 2 different track lengths; 2 metre and 3 metre

DOOR SPECIFICATION

	2M Kit R80/20	3M Kit R80/30
Maximum leaf weight	80kg	80kg
Minimum door width	500mm	500mm
Maximum door width	1000mm	1500mm
Door thickness	36mm - 46mm	36mm - 46mm



Hardware specification (Kit contents)

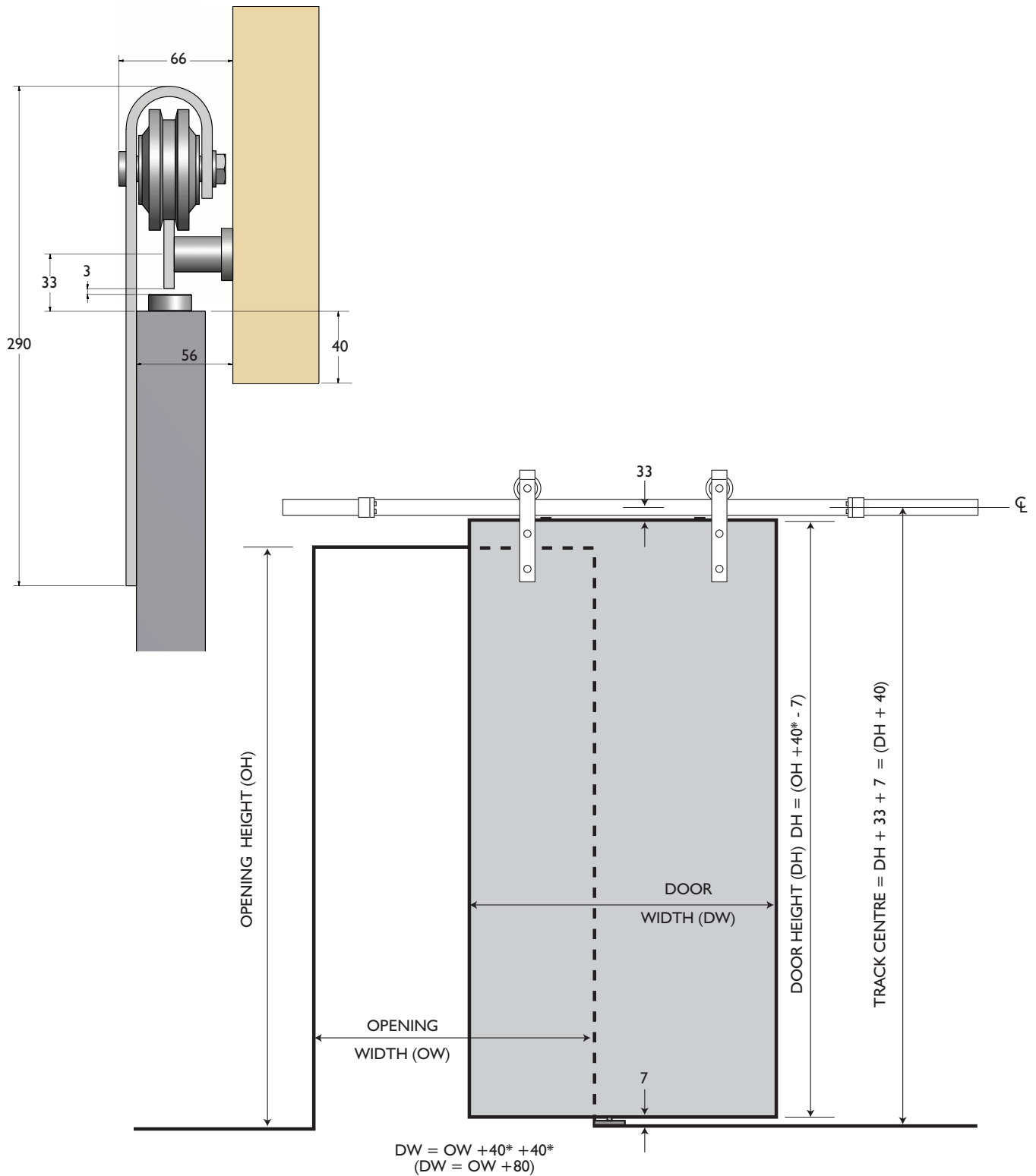
Both kits contain: 2 x hangers, 2 x door stops, 1 x floor guide, 1 x "flat" track (2M or 3M), track wall spacers and all fixings required.



H
E
N
D
E
R
S
O
N

RUSTIC 80

FOR TIMBER DOORS WEIGHING UP TO 80KG EACH



*PCH Suggests 40mm overlap of the door to the opening.

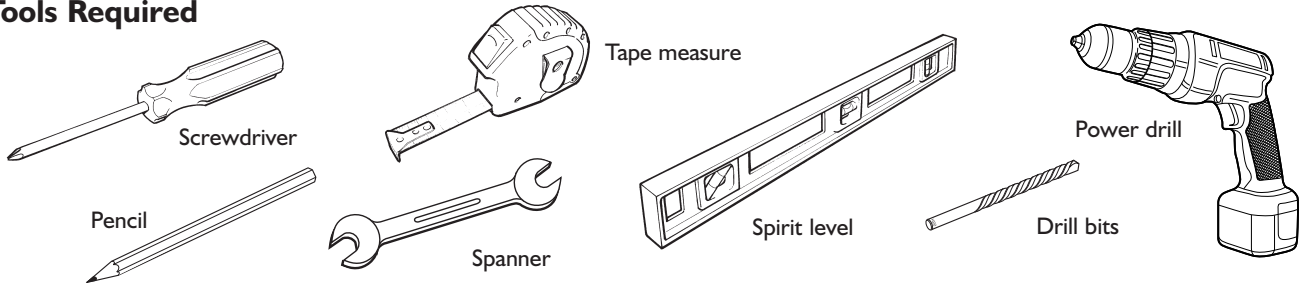
All dimensions in mm.

HENDERSON

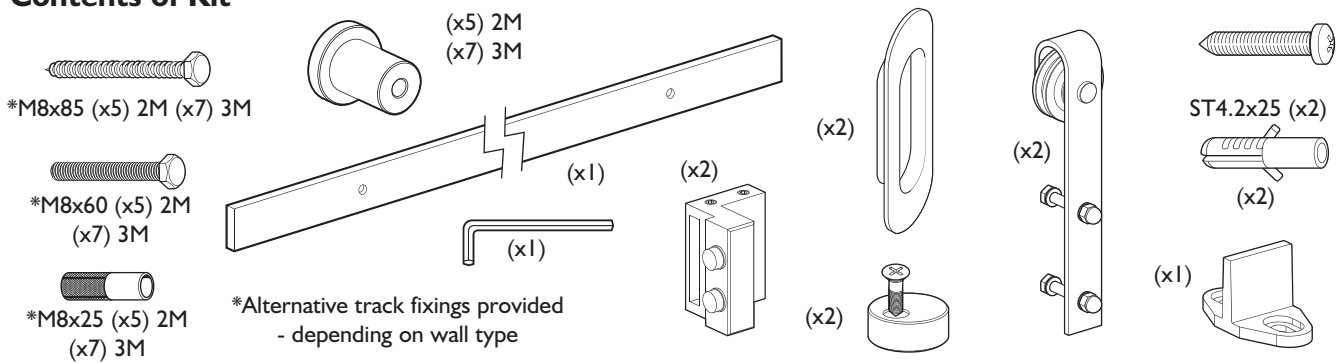
P C Henderson Limited, Durham Road, Bowburn, County Durham DH6 5NG, UK. Web: www.pchenderson.com
 UK Customer Services Department: Tel: +44 (0)191 377 7345 Fax: +44 (0)191 377 3116 Email: sales@pchenderson.com
 Export Department: Tel: +44 (0)191 377 7346 Fax: +44 (0)191 377 0755. Email: international@pchenderson.com.
 For all technical queries email our Technical Department: technical@pchenderson.com

FITTING INSTRUCTIONS - NOTICE DE POSE - MONTAGE HANDLEIDING - MONTAGEANLEITUNG ISTRUZIONI DI MONTAGGIO - INSTUCCIONES DE MONTAJE

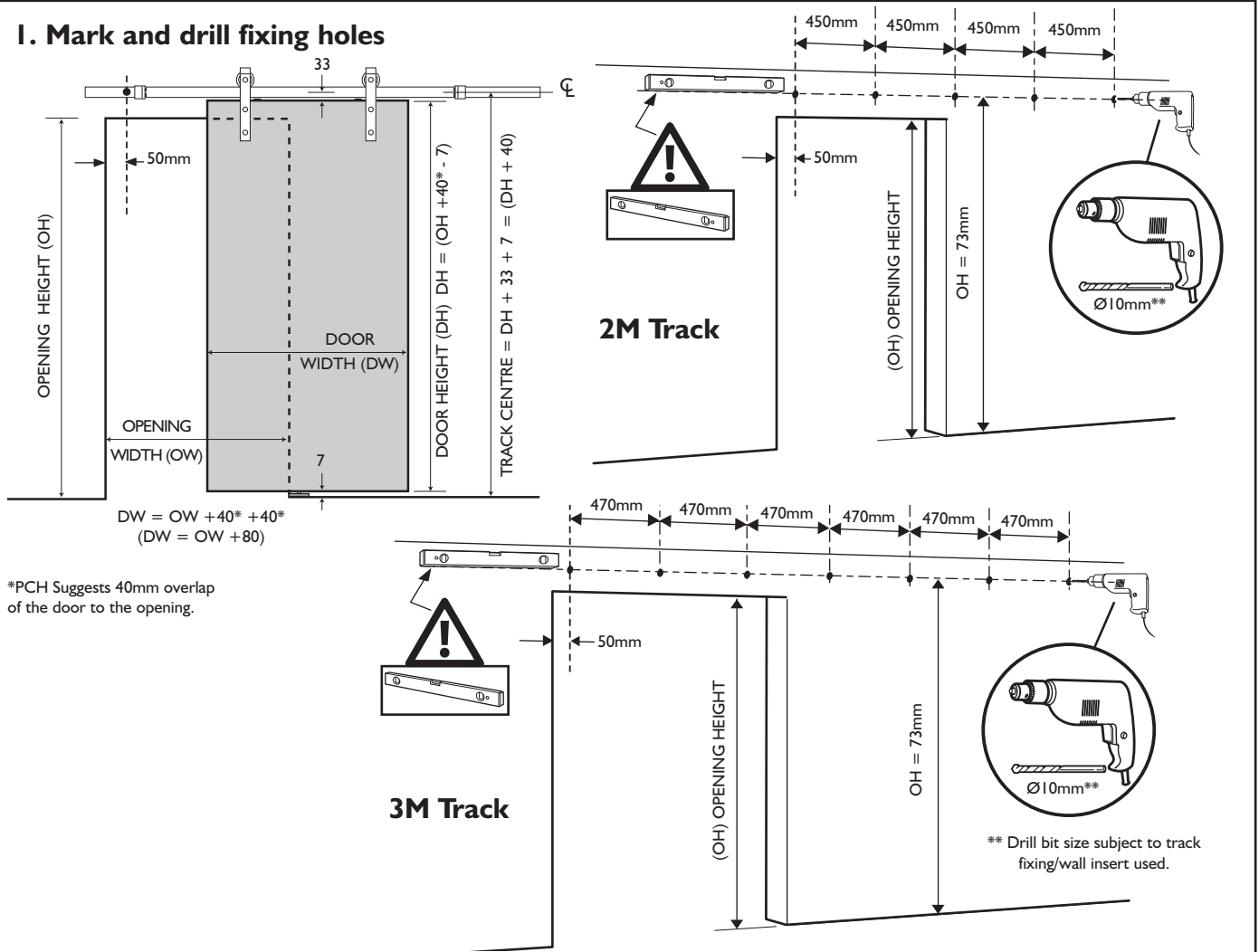
Tools Required



Contents of Kit

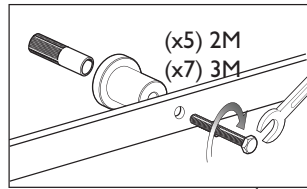


I. Mark and drill fixing holes



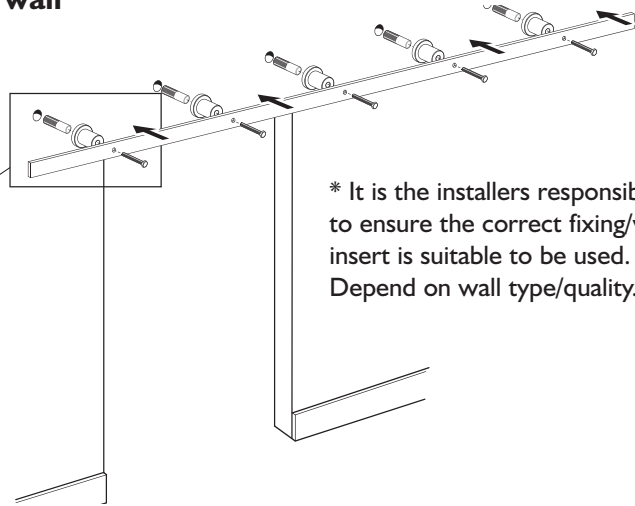
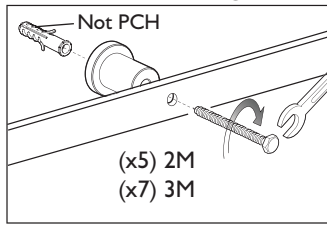
2. Fix M8 screw inserts, spacers and track to wall

MASONRY



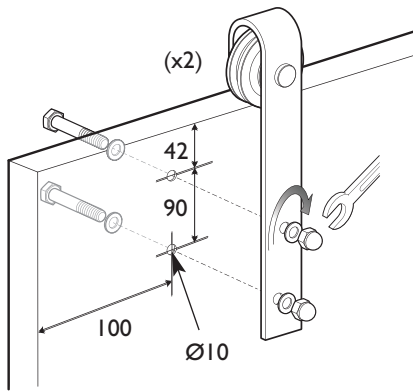
or

TIMBER/PLASTER

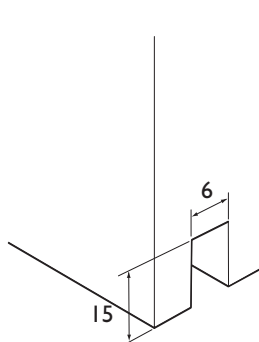


* It is the installers responsibility to ensure the correct fixing/wall insert is suitable to be used. - Depend on wall type/quality.

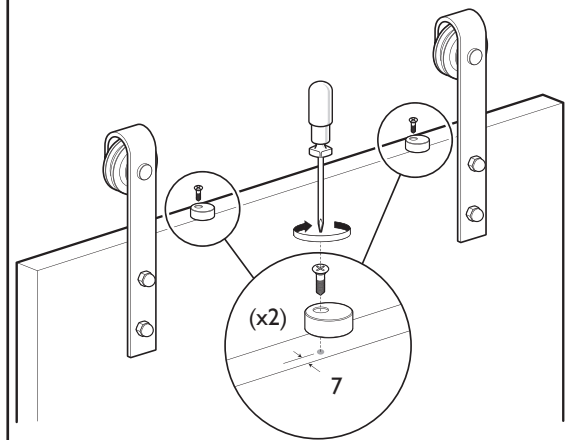
3. Fix hangers to door



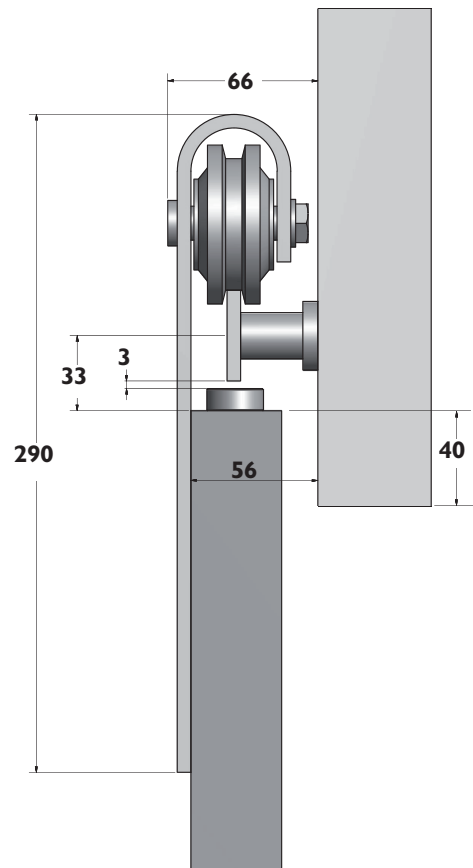
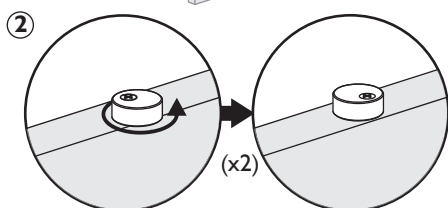
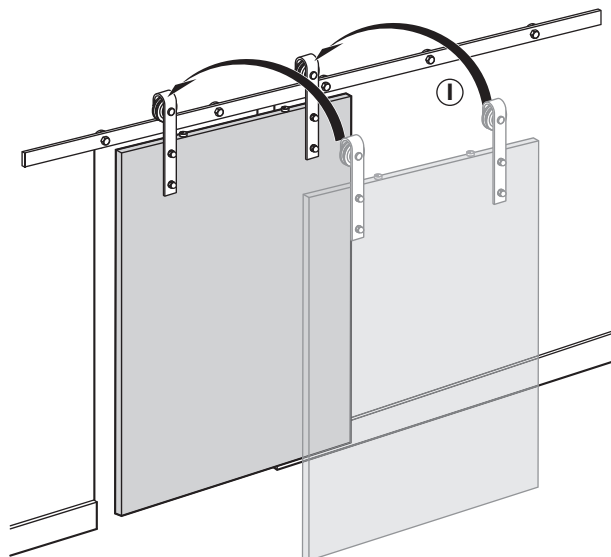
4. Floor guide routing detail



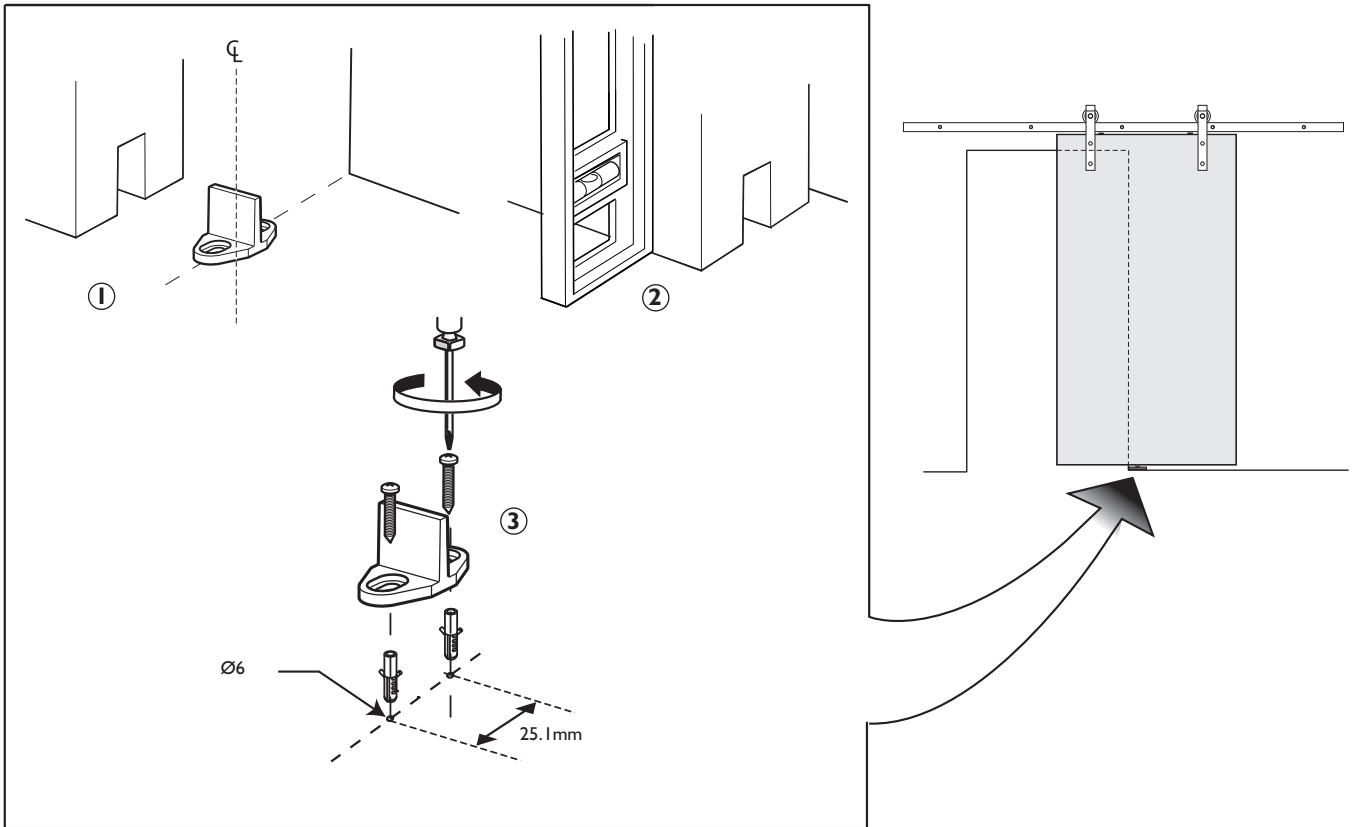
5. Fit anti-jump cams



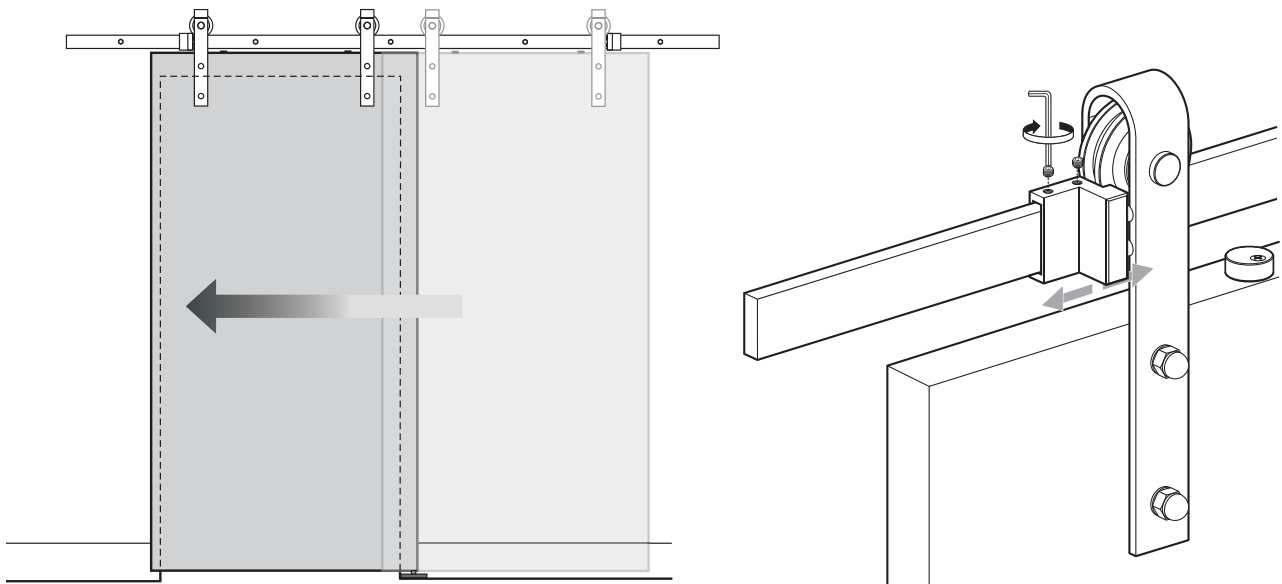
6. Hang door and adjust anti-just cams



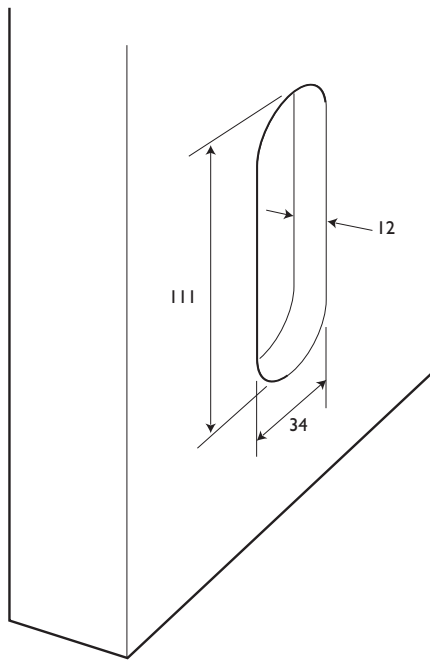
7. Fit floor guide



8. Fit and adjust door stops



9. Flush pull handle routing detail



10. Fit flush pull handle

